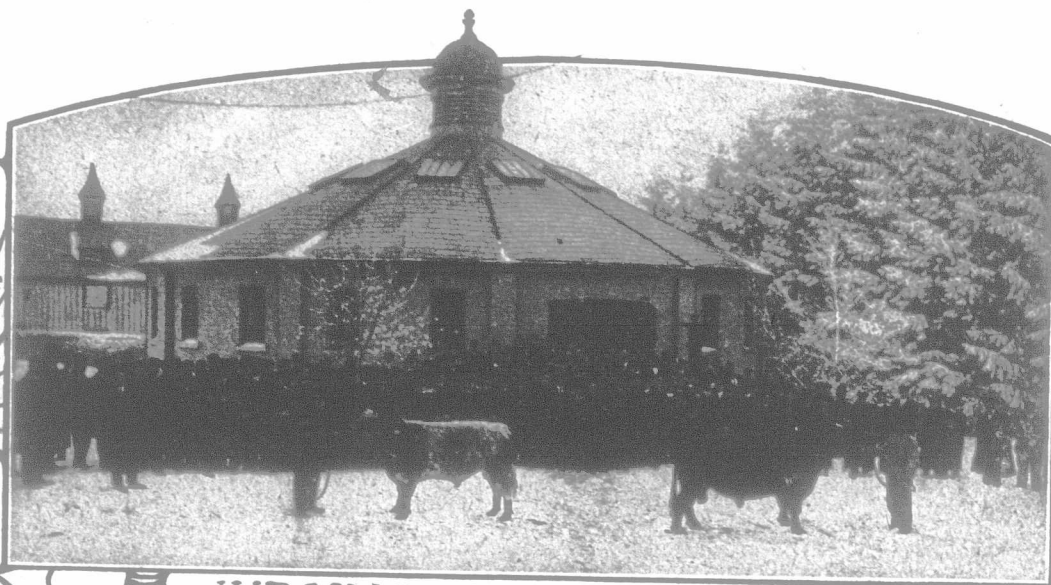


**Stock and Seed
Judging**JANUARY
12 to 23, 1915**Poultry Raising**JANUARY 12
to
FEBRUARY 6
1915

JUDGING BEEF CATTLE.

Fruit GrowingJANUARY 26 to
FEBRUARY 6
1915**Dairying**JANUARY 4 to
MARCH 19, 1915**Beekeeping**JANUARY 12 to 23
1915

BUTTER-MAKERS.

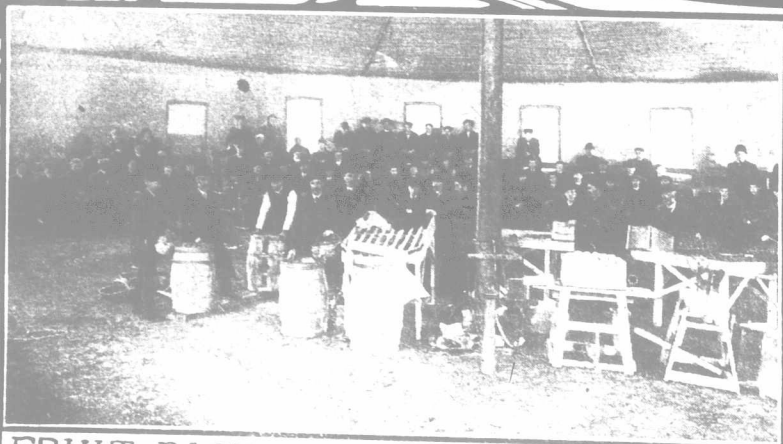
JUDGING POULTRY.

**Our Short
Courses**

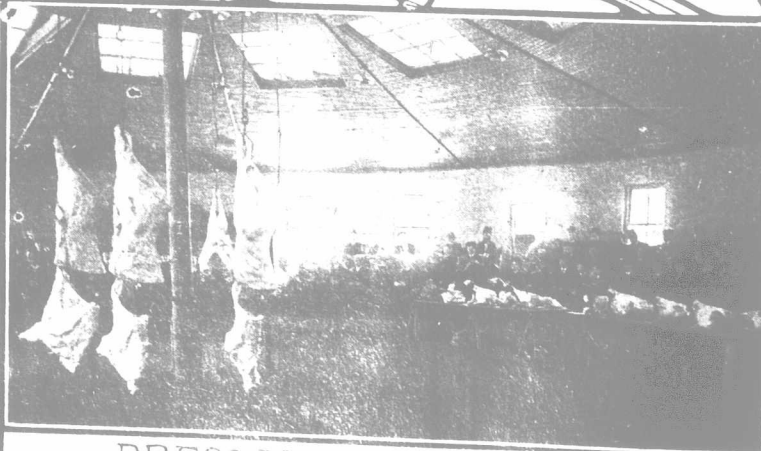
were institut-
ed for the ben-
efit of farmers
and farmers'
sons who can-
not attend
the regular
courses.

**ONTARIO
AGRICULTURAL
COLLEGE,
GUELPH, CANADA.**
**Railway
Rates**

Delegates
should be
careful to
secure the
standard Con-
vention Certi-
ficate when
purchasing
their one-way
tickets.



FRUIT PACKING DEMONSTRATION.



DRESSED CARCASSES.

G. C. CREELMAN, B.S.A., LLD, PRESIDENT

Board may be secured near the College at \$5.00 per week
Send Today for Our Illustrated Short-Course Calendar