

COMMODITY MARKETS

Week's Wholesale Review

Two weeks ago the railway situation seemed to be easier but the heavy snow storms of the past week have offered quite an obstacle to facility of transportation. Shipping was almost at a standstill and so bad is the freight outlook that many merchants are ordering all their goods by express. The coal supply was most affected by this as big consignments held up within a few miles of the city are unable to be moved.

Wholesalers have great difficulty in filling orders the securing of suitable labour being the big question. Rubber companies cannot secure girls at anywhere near pre-war wages and the production has been cut in half, but no difficulty is experienced in getting raw material. The cotton mills, hosiery, ready-to-wear and underwear factories find themselves in the same position. With the garment strike practically settled and 80 per cent of the strikers back at work the clothing manufacturers are again busy. Woolen goods have advanced and are likely to be dearer. A steady demand has strengthened the cotton market. There is a steady business in boots and shoes, the general opinion amongst manufacturers is that people are buying for the future when higher prices are expected. Hides and leather are both quiet, supplies being difficult to obtain.

The placing of an embargo upon Canadian lumber by the British Government has caused large quantities of lumber intended for export to be tied up awaiting shipment. Weather conditions have also interfered with logging, the deep snow making the felling of trees a difficult task. While building conditions are improving yet the increased cost of material prevent many from undertaking construction work unless absolutely necessary. Flour is quite firm and likely to remain in that state. Butter and cheese are quiet with prices if anything a little better than last week. Eggs are moving more freely between Montreal buyers and American houses on account of the big drop in price in the U. S. Iron and hardware trade report a dull spell with all likelihood of its remaining so. Fruit and vegetable markets are steady although the wholesalers are reporting a small demand particularly in fruit. Frost in Florida has ruined the vegetable crop and our winter and spring vegetable supplies are likely to suffer on this account. The lifting of the fruit embargo at Chicago has facilitated the securing of fruit. Potatoes are moving freely in the city and prices are dropping, the refusal of the government to place an embargo on potatoes has been both praised and criticised by local wholesalers.

Paint dealers report the arrival of orders for lead, oil and paint for spring deliveries. Wholesale grocers are experiencing a fair trade in leading lines but the volume of business is not so large as last year's at this time.

Country collections are very good but city remittances continue slow.

COUNTRY PRODUCE.

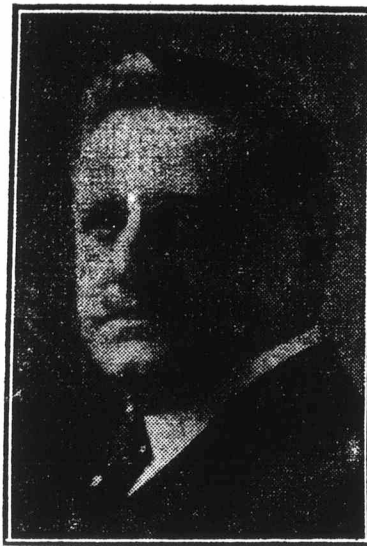
EGGS: Eggs have declined very sharply in the last week and are being sold in single cases to grocers at 40c with the prospect of immediate lower prices. In some places in the country eggs are being bought at 32-33 cents a dozen. Chicago quoted 26c yesterday with a lower market in view. Owing to the cheaper price the consumption has increased accordingly.

POULTRY: The deliveries of live poultry are very small. The brisk demand for live poultry is attributed to the number of Jewish holidays around the present time. Storage poultry is selling well and commanding good prices.

MAPLE PRODUCTS: A steady demand has helped to keep the market firm in maple syrup and sugar. Deliveries are small.

HONEY: Stocks of honey have declined to small compass and dealers report a higher market.

POTATOES are moving more freely into the country as a result of the recent mild spell, but it is almost impossible to predict future as these depend entirely on the demand. Mr. Thos. Ward, of Jos. Ward and Co., when questioned as to the refusal of the government to place an embargo on potatoes declared very emphatically that the embargo should be put on to-morrow. "The government tells us,"



M. HORACE CHEVRIER,
of Winnipeg, President of the Retail Merchants'
Association of Canada.

he said, "that there are a million and a half of surplus potatoes in this country. If there are this number then the government should produce them or see that the price is lowered to \$2.00 per bag instead of \$3.50 as we are now paying."

BEANS: Good demand but supplies are limited. We have been receiving shipments from the States, but lately the home market has been able to handle all of these and as a result we are short here in Canada. The canners in Ontario who have been supplying the armies are buying very heavy and this has helped to raise the prices.

| | | |
|--|------|------------|
| Eggs: | | |
| New laid | 0.40 | |
| Poultry—Live: | | Per Pound. |
| Fowls, 5-lbs. and over | 0.24 | 0.26 |
| Fowls, small | 0.22 | 0.23 |
| Fresh Killed Poultry: | | |
| Turkeys | 0.32 | 0.33 |
| Old Turkeys, cocks | 0.27 | 0.28 |
| Fowls, hens | 0.20 | 0.21 |
| Do., roosters | 0.17 | 0.18 |
| Chickens | 0.22 | 0.23 |
| Do., crate fattened | 0.25 | 0.28 |
| Squabs, per pair | 0.35 | 0.45 |
| Geese | 0.18 | 0.19 |
| Ducks | 0.21 | 0.22 |
| Maple Products: | | |
| Pure maple syrup, quart cans | 0.40 | |
| Pure maple syrup, 9-lb. tins. | 1.10 | 1.20 |
| Extra choice syrup, 13-lb. tins .. | 1.25 | 1.30 |
| Pure Maple sugar, per lb. | 0.15 | 0.16 |
| Honey: | | |
| Buckwheat, 5-10 lb. tins. | 0.12 | |
| Clover, in comb | 0.16 | 0.18 |
| Do., in 5-10 lb. tins | 0.14 | 0.15 |
| Potatoes: | | |
| New Brunswick, Delawares, 90-lb. sacks | 3.15 | 3.25 |
| Quebec's 90-lb. bags | 3.10 | |
| Beans: | | |
| Can. hand-picked car lots, per bu. | 7.75 | 8.00 |
| Three pound pickers | 7.25 | 7.50 |
| Five pound pickers | 7.00 | 7.25 |

FRUITS.

The local fruit trade is experiencing a very dull month compared with March of other years. Prices are if anything a little easier, due mainly to the lifting of the embargo at Chicago. Questioned as to the cause of the dull trade, a local wholesaler gave it as his opinion that people were buying only absolute necessities and were leaving aside what they are pleased to call luxuries. The weather conditions also contribute to the falling off. The Florida crop has been totally ruined by frost and growers are busy transplanting their crops, meaning that both Mississippi and Florida fruit will come in about the same time. With the perishing of the Florida crop what should be the current supply of early vegetables will be cut off and tomatoes, which are selling at \$6.00 per crate are of very poor quality. With the exception of the dealers importing from the Bahamas and other points outside America, little difficulty is experienced with transportation conditions, the railways seeming to do their best in rushing perishable goods. The vegetable market on the whole is holding strong with a good demand attributed to the lenten season. Montreal potatoes are lower, while Green Mountains are a little higher. Onions have

taken another decided raise while cabbages, lettuce and celery moved in sympathy.

Current quotations are as follows:

| | | |
|---|------|-------|
| Fruit:— | | |
| Cranberries, per bbl. | 8.00 | 11.00 |
| Baldwins, per bbl. | 4.50 | 6.00 |
| Cranberry pippin, per bbl. | 6.00 | |
| Greenings, per bbl. | 5.50 | |
| Pewaukies, per bbl. | 4.00 | 4.50 |
| Mackintosh Reds, per box | 2.25 | 3.25 |
| Spies, per bbl. | 7.00 | 9.00 |
| Bananas, per bunch. | 2.50 | 3.00 |
| Grapes, Almeria, per keg | 9.00 | |
| Grapefruit, Florida and Cuban .. | 4.50 | 4.75 |
| Do., Jamaica | 3.50 | |
| Lemons, Palermo, per box | 4.00 | 4.50 |
| Do., Messina | 4.50 | |
| Oranges, California, Navel, per box .. | 3.25 | 4.00 |
| Do., Floridas | 4.00 | 4.50 |
| Do., Mexican | 2.00 | 2.25 |
| Pears, Winter Nellis, per box | 5.50 | |
| Vegetables:— | | |
| Artichokes, per bag | 1.75 | |
| Beets, per bag | 1.50 | |
| Beans, per hamper | 8.00 | |
| Brussels, Sprouts, per qt. | 0.15 | 0.25 |
| Cabbage, Montreal, per bbl. | 6.50 | |
| Carrots, per bag | 1.50 | |
| Cauliflower, California, per double crate | 4.50 | |
| Celery, Florida, per crate | 6.00 | |
| Garlic, Venetian, per lb. | 0.12 | |
| Green Peppers, per basket | 1.00 | |
| Horse Radish, per lb. | 0.18 | |
| Boston Lettuce, head, per box, 2 doz. | 3.00 | |
| Do., curly, per box, 4 doz. | 3.00 | |
| Onions, red, per 70 lb. bag | 7.00 | |
| Do., Spanish, per crate | 9.50 | |
| Potatoes, Montreal, per 80 lb. bag. | 2.75 | |
| Do., Green Mountains, per 80 lb. bag | 3.50 | |
| Do., Sweet, per basket | 3.25 | |
| Parsley, per doz. bunches | 1.50 | |
| Parsnips, per keg | 1.50 | |
| Rhubarb, per doz. | 0.75 | |
| Salsify, per doz. bunches | 1.25 | |
| Turnips, per bag | 6.00 | |
| Tomatoes, per crate | 6.00 | |

JUTE AND HEMP.

The market for hemp is very quiet owing to the delay in cables from Manila, which checks business. The situation in the Far East is assumed to be firm, as the high freights and insurance make in that direction. The German raider is not expected to both the Pacific routes, which are protected by the Japanese. Sisal is quiet and steady at the old quotations of the regulating commission. Istle is dull and

Current prices in the New York market are as follows:

| | |
|--------------------------------------|-------|
| Manila Hemp, fair current spot | 0.16 |
| Manila shipment | 0.21½ |
| Manila Good Current shipment | 0.24 |
| Istle Hemp, Palma | 0.05½ |
| Istle Hemp, Tula | 0.04½ |
| Istle Hemp, Jaumauve | 0.06½ |
| Jute, Spot | 0.09½ |

PROVISIONS.

The feature of the provision market during the past week has been the sharp advance in lard and shortening. Lard is very scarce and rules 1½c higher than before. Cooked meats are firm but without any advance. Hams and bacon have raised about 2c a pound while pork is up \$2.00 per barrel.

| | | |
|--|-------|----------|
| Hams:— | | Per lb. |
| Smoked Hams, 8-14 lbs. | 0.28 | |
| Do., 14-20 lbs. | 0.27 | |
| Do., 20-25 lbs. | 0.25 | |
| Do., over 25 lbs. | 0.24 | |
| Bacon:— | | |
| Breakfast | 0.28 | 0.30 |
| Windsor Bacon, selected | 0.29 | |
| Windsor Bacon, boneless | 0.32 | |
| Barrel Pork:— | | Per bbl. |
| Short cut pork | 42.00 | |
| Clear Fat Pork | 43.00 | |
| Mess Pork | 39.00 | |
| Bean Pork, American | 39.00 | |
| Plate Pork, 200 lbs. | 39.00 | |
| Pure Lard:— | | pound. |
| Tierces | 0.24 | |
| Tubs | 0.24½ | |
| Pails | 0.24½ | |
| Tins | 0.24½ | |
| Cases, 3, 5, 10's | 0.25 | |
| Prints | 0.25½ | |
| Compound Lard; Western Grades:— | | |
| Tubs | 0.18½ | |
| Tins | 0.18½ | |
| Cases, 3, 5, 10's | 0.19½ | |
| Prints | 0.19½ | |
| Cooked Meats:— | | |
| Roast shoulder pork | 0.33 | |
| Roast hams, boneless | 0.35 | |
| Cooked hams, boneless | 0.38 | |
| Cooked hams, rind off | 0.33 | |
| Head cheese | 0.12 | |
| English brawn | 0.11 | |