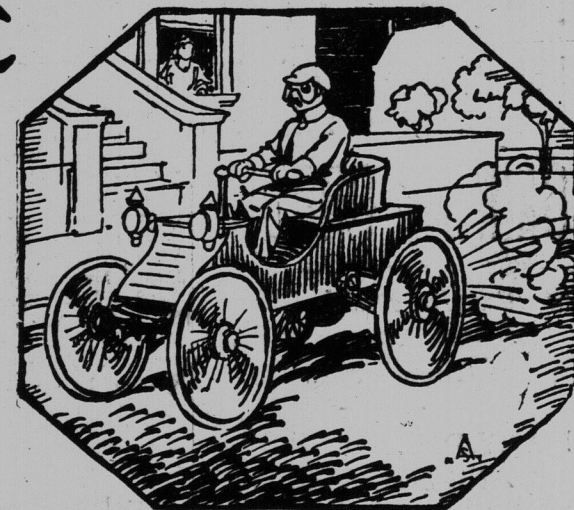


## NEW BRUNSWICK AUTOMOBILE ASSOCIATION NEWS

T. P. REGAN, K. C., President. J. CHARLTON BERRIE, Secretary.  
OFFICE: PUGSLEY BLDG., Saint John.

N. B. A. A. Gives Road Information. Saint John-Digby Steamer Service.  
Boston-Saint John Steamer Service. Prince Edward Island Ferry Service.  
Consulting Solicitors. Reasons for Joining This Live Organization.



### AUTOMOBILISTS

It Will Pay You to  
STOP  
and  
Stop Again  
at  
FISHER'S  
In The



#### BECAUSE

Here you will receive the finest kind of service coupled with real courtesy.

#### WE HAVE

A complete line of Gasolines, Oils, Greases, etc.  
The largest and most complete line of  
AUTO SUPPLIES

to be had at any Filling Station in Saint John.  
An Auto Wash that will surely please.  
Alumite Service and Equipment.  
Greasing Racks that the most timid operator can drive on safely.

ASK FOR OAK OIL  
AT  
FISHER'S  
FILLING STATION

#### ROAD CONDITIONS.

Saint John to Fredericton, Broad Road—  
Earth and gravel road, in good condition.

Saint John to Fredericton via River Road—Earth and gravel. This road is being improved and section under construction will not cause trouble to motorists.

Fredericton to Woodstock—Earth and gravel road in good condition, 10 miles outside of Fredericton has been oiled.

Woodstock to Edmundston—Earth and gravel road in good condition. Short diversion at Arthurville. Road under construction 4.5 miles. Aroostook River, South end Long Swamp.

Saint John to Sussex—Terra road to Rothesay, 10 miles. Road under construction from Rothesay to Hampton River 6.1 miles. Marked detour via the Dolan Road, French Village, Smithtown and Lakeside, 1 mile from Hampton. There are several other good detours via Gondola Point, Model Farm and Gondola Point Ferry to Kingston and Ketchum Road to Hampton.

Sussex to Sackville—Earth and gravel road in good condition. In this section a number of the signs have been removed. New ones will be replaced at an early date.

Moncton-Newcastle—Earth and gravel road with Terra road between Chatham and Newcastle, all in good condition.

Newcastle to Campbellton—Earth and gravel road in good condition.

Culbert and Hill College Hill, Bathurst Saint John to St. Stephen—Earth and gravel road in good condition.

Motorists will find some repair work going on, but it will cause no trouble, and every effort is being made to avoid using detours and to carry the traffic over the work without any great inconvenience.

The Automobile Association would like to receive reports from members and others on the condition of the various tours they may take.

#### SAINT JOHN-DIGBY STEAMER SERVICE.

The cost of transportation of automobiles between Saint John and Digby on S.S. Empress, as follows:

Cars 14 ft. and under..... \$10.00 each  
Cars over 14 ft. but not over 16 ft..... 12.50 "

Cars over 16 ft. but not over 18 ft..... 15.00 "

Each additional foot or fraction thereof over 18 ft..... 1.50

Clearance limit is 6 ft. 2 in. Ordinary touring cars higher than dimensions given, can be handled, however, by lowering the top, and limousines and sedans removal of tires.

As cars are loaded at Saint John according to tidal conditions, they must be delivered about 6.00 p.m. the evening previous to sailing, and special arrangements must be made in advance for loading of cars on Sunday.

It is not necessary to drain gasoline tanks as regulations permit of transportation with gas, but the flow from the tanks to the carburetors must be closed and all connections tight so that there will be no leakage.

Cost of first class one way fare \$2.25 and round trip \$4.00, limit 30 days, war tax five cents additional in each case.

Steamer leaves Saint John for Digby daily except Sunday, at 7.15 a.m. Atlantic, due Digby 10.30 a.m., and on the return leaves Digby at 2.45 p.m. Atlantic time, due Saint John 6.00 p.m.

#### BOSTON-SAINT JOHN STEAMER SERVICE

The Eastern Steamship Lines, Inc., operate the steamship Governor Dingley, plying between Boston and Saint John on Mondays and Fridays, leaving the Central Wharf, Boston, on these days at 10 a. m., daylight saving time, reaching Saint John, New Brunswick, at 12 noon the following day.

The steamer Arthur leaves Central Wharf, Boston, on Sundays and Wednesdays, making a direct trip to Saint John, reaching that city at 6 o'clock the following morning.

The fare is \$10, including the war tax. The rate on automobiles is \$1 per 100 pounds when accompanied by a passenger, and \$1.35 when unaccompanied.

#### PRINCE EDWARD ISLAND FERRY SERVICE

Twice daily in both directions, except Sundays, as follows:  
Leaves Tormentine 2.35 p. m. and 7.15 p. m. Arrives Borden 4.10 p. m. and 8.40 p. m.

Returning, leaves Borden 8.50 a. m. and 4 p. m. Arrives Tormentine 10.20 a. m. and 5.50 p. m.

The one-way passenger fare between these two points is 40 cents, one month round trip 75 cents, and summer tourist ticket with limit Oct. 31, 80 cents.

The charge for a passenger automobile is \$4 per trip, each way, and for sightseeing automobiles \$6 per trip, each way.

#### SOLICITORS FOR N. B. A. A.

The association is pleased to recommend to its members and to members of affiliated associations the following solicitors who, at the request of the N. B. A. A., have consented to advise the members of our association and affiliated members consulting them in matters connected with motor vehicle traffic in this province without charge:  
W. A. Ross, care Kelley & Ross, Barristers, 108 Prince William street, Saint John, N. B.; C. R. Hawkins, care Hawkins & Harrison, Barristers, Fredericton, N. B.; R. P. Cahill, B. C. L., care McIntyre & Cahill, Barristers, P. O. Box 188, Sackville, N. B.; J. A. Creighton, B. A., N. B. Telephone Bldg., Newcastle, N. B.; M. N. Cockburn, care Cockburn & Cockburn, Barristers, St. Stephen, N. B.; George T. Mitton, B. C. L., Subway Block, Moncton, N. B.; H. C. Ramsey, Barrister, Bathurst, N. B.; Hon. J. E. Michaud, Edmundston, N. B.; J. H. McFadden, Barrister, Sussex, N. B.; H. A. Carr, B. C. L., Mowat Bldg., Campbellton, N. B.; Messrs. Murray & Murray, Barristers, Chatham, N. B.; Messrs. J. B. & R. P. Hartley, Barristers, Woodstock, N. B.

#### MILEAGE AND GASOLINE CONSUMPTION.

Members are requested to fill in the blanks below for the guidance of the New Brunswick Automobile Association in studying the effect of a tax on gasoline:

Approximate mileage traveled yearly in New Brunswick..... miles.  
Approximate purchase of gasoline yearly in New Brunswick..... gallons.

Name of member.....  
Make of car.....  
Type (opened or closed body).....

NEW YORK, July 17.—Pete Sarmiento, Philippine bantamweight, and Jack Sharkey, of Brooklyn, battled through three rounds of a 12 round match last night in a "no contests" decision when a downpour of rain ended the bout.

The New York Boxing Commission decided to give Mike Burke another chance when he was arranged for fouling Frankie Carpenter in a bout at the Rockaway Beach Arena last Thursday night. There appeared to be good reason to believe that the foul was unintentional.

Tom McArdle has completed next Monday's card for the Queensboro Stadium in Long Island City. In the main event Johnny Dundee, veteran of 800 fights, is set to take on the up-and-coming Johnny Leonard, of Allentown. In the semi-final Willis Harmon is to meet Harry Gelfand, in the bout of the tens Black Bill, flyweight champion of Cuba, is down to scuffle with Corporal Izzy Schwartz.

#### MOTORISTS' ATTENTION!

Does it mean anything to you—  
1. To drive over improved roads?  
2. To be routed correctly when touring?

3. To have improper unjust legislation corrected?  
4. To get reciprocal service almost anywhere in Canada or the United States?

5. To secure the most widely quoted Automobile Club magazine in Canada?  
6. To carry an emblem on your cars that spells protection and is a sign of honor?

7. To help yourself and neighbor motorist by collective effort that comes through a public spirited organization such as the N. B. A. A.?  
8. To get maps and touring information that will help you?

9. To get a Bulletin that keeps you posted on Club activities?  
If it does, then join the N. B. A. A. AT ONCE.

#### SENDING TELEGRAMS.

Your N. B. A. A. membership card will be recognized by the Canadian Pacific Railway Company's Telegraph and the Western Union if you wish to send collect telegrams.

#### DOWNTOWN SERVICE STATION

T. Harrison Bullock, Prop.

### Playing Safe

The wise motorist always starts out with a full tank of Gas and correct amount of Oil.

Why not drive around today and let the oldest and most reliable Station serve you.

Nelson Street,  
North Wharf  
(Foot of King St.)

Try a package of Boyceite—we sell it.



Efficient Service



Careful Attention



## M. & M. MOTORS LIMITED OFFICIAL ADMIRAL BEATTY GARAGE

#### To Motoring Public and Tourists

While in Saint John, if your car needs attention or storage bring it to the M & M Motors Garage, corner of Sydney and Leinster Streets, and you will be assured of courtesy and prompt attention.

#### Authorized "Sales and Service" of

FLINT, DURANT, STAR, RICKENBACKER "6" AND STRAIGHT "8" CARS

Storage, Gasoline, Oils, Grease, and Accessories, 24-Hour Service in Washing, Oiling and Greasing. Expert Mechanical Attendance on All Makes of Cars. The Only "CRANE SERVICE CARS" in Saint John insuring prompt relief no matter how badly a car is wrecked.

The Tourist should certainly take advantage of these facilities, as our Garage is centrally located at the Southeast Corner of King Square, less than a minute's walk from the new Admiral Beatty Hotel. Follow the Ball and Arrow Signs; it ends at Our Door.

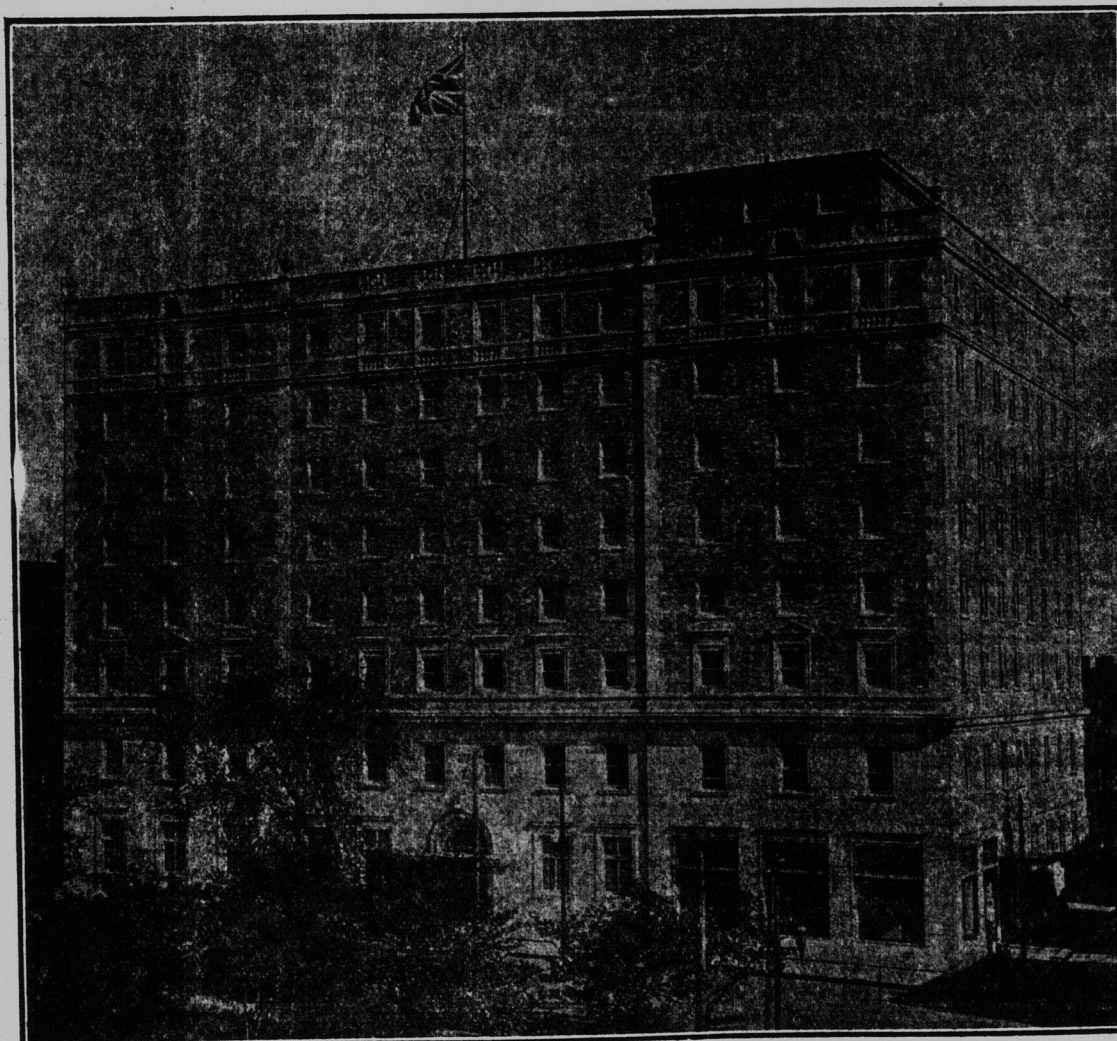
Cor. Leinster and  
Sydney Streets  
Saint John, N. B.



Cor. Leinster and  
Sydney Streets  
Saint John, N. B.



#### The Motorist's Headquarters



The Admiral Beatty Hotel, Saint John, N. B.

#### RATES

Rooms, running water and toilet - \$2.50 and \$3.00  
Rooms with bath 3.00 and up  
Sample Rooms, with and without bath 4.00 and up

#### MEALS IN MAIN RESTAURANT

Club Breakfast, 75c. Club Luncheon, 90c.  
Table d'Hôte Dinner, \$1.25  
Meals served in Cafeteria at Popular Prices.

#### DIRECTION



H. ARTHUR PETERA,  
Manager.

#### 200 ROOMS

The Guest Chambers of the Admiral Beatty, numbering two hundred, are exceptionally well furnished, and command a fine panoramic view of Saint John harbor and river.  
There are twenty sample rooms, large and well lighted, and equipped with disappearing beds. Here the merchants of Saint John may conveniently inspect the samples displayed by commercial travellers.



### Perhaps It's Your Fault

If the car gets to bucking and filling when you ask it to climb a hill—chances are it's your fault for not having the car "serviced" as often as it should be. Let us take care of your car.

Gasoline, Oils, Tires, Auto Accessories, Greasing, etc.

### AVENUE SERVICE STATION LIMITED

Douglas Avenue - - - Saint John, N. B.  
Near The Reversing Falls  
The Station of Smiling Service

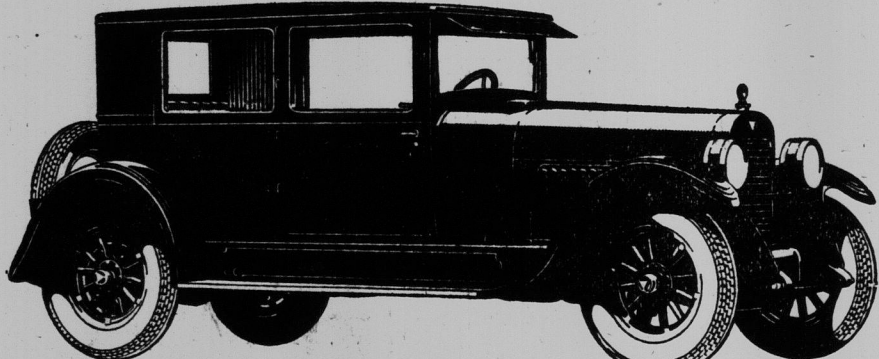
### World's Greatest Buy

\$1710

F. O. B. Windsor, Taxes Extra

### for the HUDSON COACH

Throughout Hudson's long-time policy of giving greatest value for the money, this is the lowest price, the finest Hudson, the greatest value Hudson ever offered. Only Hudson's exclusive advantages of the famous patented Super-Six principle combined with the world's largest production of 6-cylinder cars make it possible. By greater margins than ever before it is today the "World's Greatest Buy."



Hudson - Essex World's Largest Selling 6-Cylinder Cars

Motor Car & Equipment Co., Limited

New Brunswick Distributors,

108 to 112 Princess Street, Saint John, N. B.

(6917)