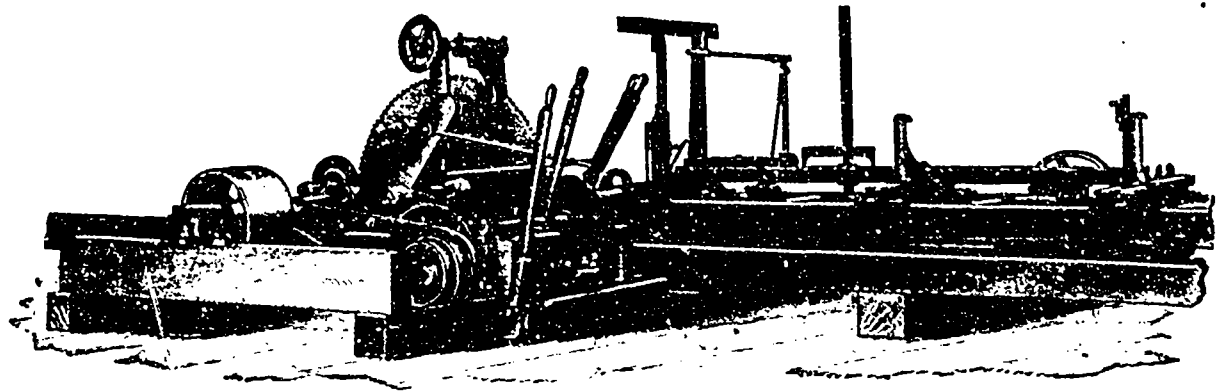


# The "Canadian" Over Log Saw Guide

PATENTED IN CANADA AND UNITED STATES.

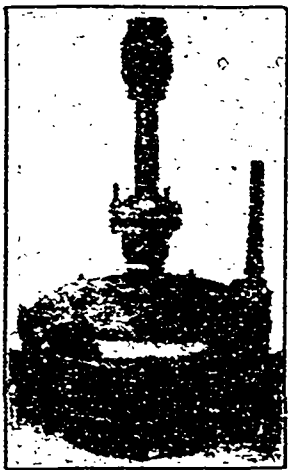


Your Mill would make more money if you would make more lumber from the same quantity of logs. You can do by using a thinner saw, and you can use a thinner saw with one of my Patent Over Log Saw Guides. They are adapted to either Stationary or Portable Saw Mills, Re-sawing Machines, &c., &c. The illustration shows one of my Portable Saw Mills equipped with this Guide and carrying a saw 60 in. diameter, 12 guage. All my Portable Mills will take saws up to 72 in diameter, and this guide will take saws from 36 to 72 in. diameter. It is adjustable every way. I am prepared to fill orders or complete Circular Saw Mill Outfits, or will make the guide to fit any ordinary existing saw frame

Correspondence Solicited    ✂    ✂    Catalogues Free

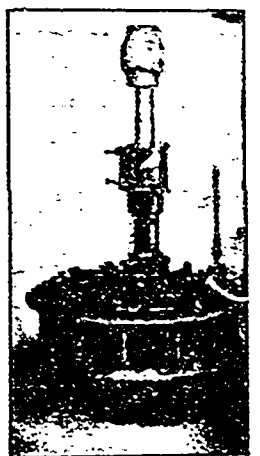
**F. J. DRAKE, - Belleville, Ont.**

P.S.—My United States Patent is For Sale.



## THE LEFFEL AND VULCAN TURBINES

POSSESS DISTINCTIVE MERITS, which should have the attention of water power owners 1st—They are strongly and carefully built. 2nd—They are economical in their use of water. 3rd—They develop more power in proportion to the water used than any other Turbine built. Mr. J. D. Flavelle, of the Flavelle Milling Co., of Lindsay, writes us under date of March 7th as follows:



"Referring to the two 74" water wheels (Leffels) purchased from you during the past year. As far as we have had an opportunity of testing, they have done their work excellently, in fact are doing more than you guaranteed them for. We took a test of the power they were developing with a head of water of 3 ft. 10 in., and they developed very nearly 100 h. p. We are thoroughly satisfied with same."

✂ This letter is but one of many such.

We also  
Manufacture

The Lane Saw Mill, Four Styles of Shingle Machines,  
Lath Machine Edgers, Trimmers, Pulleys, Hangers, Boxes, Etc.

WRITE FOR PRICES AND CATALOGUE TO

### MADISON WILLIAMS

H. E. Plant, Agent,  
Common and Nazareth Sts. MONTREAL

SUCCESSOR TO  
PAXTON, TATE & CO.

PORT PERRY, ONT.