

# PATERSON EWEN

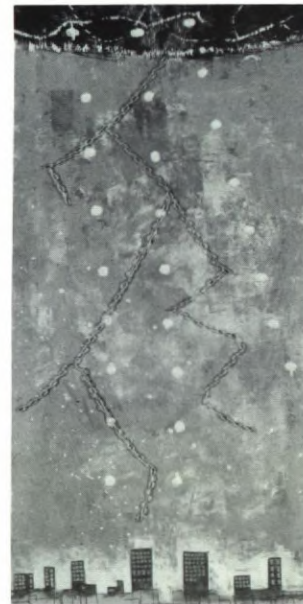
MONTREAL, QUÉBEC  
1925



\*4. *Forked Lightning*  
1971  
acrylic, linoleum, metal,  
canvas on plywood  
acrylique, linoleum, métal,  
toile sur contre-plaqué  
244 x 122 cm.



5. *Storm over the Prairies*  
1971  
acrylic, metal, fibrous  
material on plywood  
acrylique, métal, matière  
fibreuse sur contre-plaqué  
235 x 101 cm.

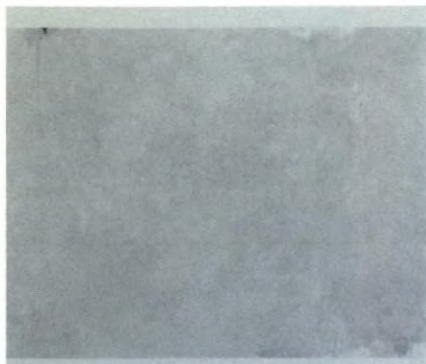


6. *City Storm with  
Chain Lightning*  
1971  
acrylic, metal and chains  
on plywood  
acrylique, métal et chaînes  
sur contre-plaqué  
244 x 122 cm.

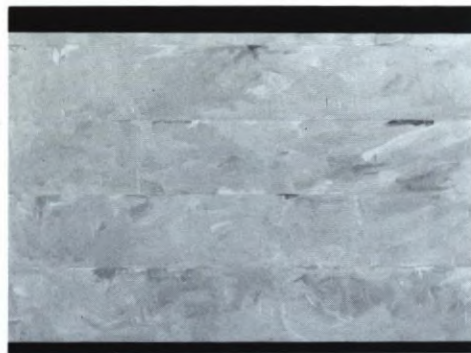
# CHARLES GAGNON

MONTREAL, QUÉBEC  
1934

7. *Marker No. 8*  
*Marqueur No 8*  
1973  
oil on canvas  
huile sur toile  
147.5 x 172.5 cm.



\*8. *Screenspace No. 2*  
*Espace/écran No 2*  
1973-4  
oil on canvas  
huile sur toile  
168 x 299.5 cm.



9. *Steps No. 4*  
*Étapes No 4*  
1968  
oil on canvas  
huile sur toile  
173 x 198 cm.

