

A SONG OF CANADIAN RIVERS.

Flow on, noble rivers! flow on! flow on! In your beautiful course to the sea...

Flow on, noble rivers! flow on! flow on! Flow sweetly and smoothly and free, Chant loudly and proudly the notes of our land...

Flow on! sweep on! sweep on! flow on! In a measureless, mystical key, Each note that you wake on streamlet and lake...

Belleville, Ont. T. O'HAGAN.

OUR CHESS COLUMN.

Solutions to Problems sent in by Correspondents will be duly acknowledged.

TO CORRESPONDENTS.

J. W. S., Montreal.—Paper to hand. Thanks. R., Hamilton.—Letter received. Thanks. The report will appear next week.

Student, Montreal.—Correct solution received of Problem No. 281.

A few years ago chess was the pursuit of a very limited number in almost every intelligent community, and little was heard by hundreds of persons either of the skill of our great players, or of their personal character.

We must ourselves confess to a desire on our part to let those who have achieved renown in playing the noble game, remain merely as chessplayers and not reveal we know which are to some extent the lot of all, and which are better left in oblivion.

We are led to make these remarks by reading an anecdote of Staunton lately, which is calculated to make him appear as small to the general of men as he becomes great to the chess student who plays over his games with such antagonists as Andersen, Der Lasa, Jansisch and Lowenthal.

Mr. Crake of the Hull Bellman has announced a Tourney for End Games. Positions to be sent to him with the stipulation—"White to move and win."

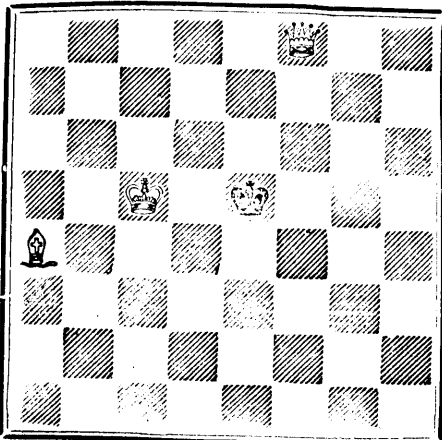
Preparations are already being made for a grand Italian National Tourney at Milan, in 1881. Count Alexander Castiglione, Count Henry Hochell del Dosso, Dr. John Dalla Rosa, Professor Pompey Castelfranco and others compose the committee having charge of the preliminaries.

Messrs. J. H. Black, the and H. E. Bird have entered the tournament at Walsbaden and Brunswick; the report that Mr. Kollsch is also entered is pronounced unfounded by the Field.

PROBLEM No. 25.

By M. Faysse, Beauvoisin (Gard), France.

BLACK.



WHITE

White to play and mate in three moves.

GAME 414TH.

CHESS IN LONDON.

(From Land and Water.)

The following game, which was played in the annual Lowenthal Tourney of the College Chess Club, is good enough to return the prevalent notion that ladies cannot play respectably at chess.

creditable achievement undoubtedly, even after taking into consideration that he was handicapped to give a Rook.

(Remove White's Q.R.)

- White. (Mr. G. C. Heywood.) 1. P to K 4, 2. P to Q 4 (a), 3. P to K 5, 4. P to Q B 3, 5. Kt to B 3, 6. B to K 2, 7. Castles, 8. Kt to R 3, 9. R to K sq, 10. P takes K B P, 11. B to K Kt 5, 12. Kt to K 5, 13. B to Kt 4, 14. Kt takes B (d), 15. Q takes Kt, 16. P takes P (f), 17. P to R 4, 18. Q to Kt 3, 19. B to B sq, 20. P to K R 4 (g), 21. P to R 5, 22. P takes P (ch), 23. Q to B 2.

White resigns.

NOTES.

- (a) P to K B 4 affords a better chance at the odds. (b) Q to Kt 3 is preferable. P takes P would also be good, though not quite so good as it looks. (c) Against "the principles," but they are not very revengeful in odd games, if grave mistakes be avoided. (d) Speculating upon a slip. He should play B to R 3, hoping for an opportunity afterwards. (e) A capital resource, and one that completely turns the tables. (f) If R takes P she would crush him by Q R to K sq. (g) If R takes Kt, R takes R, 21 Q takes B, Q takes P (ch), 22 K to R 2, Q takes R P (ch), 23 K to Kt sq, Q to B 7 (ch), 24 K to R 3, R to B 4, and wins. We do not imagine that the young lady saw to the end of this when she proffered two minor pieces for a Rook; but at any rate she had her eye on the key check, and expected it to turn to her advantage.

SOLUTIONS.

Solution of Problem No. 282.

- White. 1. Q to Q R 7, 2. Mates acc. Black. 1. Any move

Solution of Problem for Young Players No. 281.

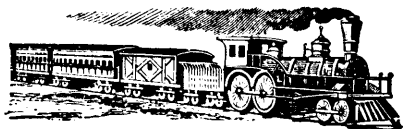
In this Problem the W K should be at K B 7

- WHITE. 1. Q to Q B sq, 2. Q to Q B 6 (ch), 3. Q to K B 3 mate. BLACK. 1. K takes Kt, 2. K to K B 3

PROBLEMS FOR YOUNG PLAYERS, No. 282.

- White. K at K B 3, B at Q R 2, Kt at K B 5, Pawns at K B 3 and 4, and Q R 4. Black. K at Q B 3, K at Q B 3, B at Q 2, Kt at K 3, Kt at Q B 4, Pawns at Q 3, Q B 2, and Q Kt 3

White to play and mate in two moves.



Q. M. O. AND O. RAILWAY.

Change of Time.

COMMENCING ON

Wednesday, June 23, 1880.

Trains will run as follows:

Table with columns: MIXED, MAIL, EXPRESS. Rows: Leave Hochelaga for Hull, Arrive at Hull, Leave Hull for Hochelaga, Arrive at Hochelaga, Leave Hochelaga for Quebec, Arrive at Quebec, Leave Quebec for Hochelaga, Arrive at Hochelaga, Leave Hochelaga for St. Jerome, Arrive at St. Jerome, Leave St. Jerome for Hochelaga, Arrive at Hochelaga.

(Local trains between Hull and Aylmer.) Trains leave Mile-End Station Seven Minutes Later. Magnificent Palace Cars on all Passenger Trains, and Elegant Sleeping Cars on Night Trains. Trains to and from Ottawa connect with Trains to and from Quebec. Sunday Trains leave Montreal and Quebec at 4 p.m. All Trains Run by Montreal Time. GENERAL OFFICE, 13 Place d'Armes Square. TICKET OFFICES, 13 Place D'Armes, and 202 St. James Street, Montreal. Opposite ST. LOUIS HOTEL, Quebec. L. A. SENEAL, Gen'l Sup't.

LIEBIG COMPANY'S EXTRACT OF MEAT



FINEST AND CHEAPEST MEAT-FLAVOURING STOCK FOR SOUPS, MADE DISHES & SAUCES.

"Is a success and boon for which Nations should feel grateful."—See Medical Press, Lancet, Brit. Med. Jour., &c. "Consumption in England increased tenfold in ten years."

CAUTION.—Genuine ONLY with fac-simile of Baron Liebig's Signature in Blue Ink as on Label.



CANADIAN PACIFIC RAILWAY.

Tenders for Rolling Stock.

THE time for receiving tenders for Rolling Stock for the Canadian Pacific Railway, extending over four years, is extended to 2nd August.

By order, F. BRAUN, Secretary.

Department of Railways and Canals, Ottawa 23rd June, 1880.

SEND 10c. to the Queen City Card House, Toronto, Ont., for 25 Pretty Bird and Floral Cards, 25 new Transparent, 25 White Bristol, or 25 neat assorted Cards, with name. 12 Turn down corner, gilt beveled edge, very handsome, 20c. Outfit 10c.

E. N. FRESHMAN & BROS.

Advertising Agents,

186 W. Fourth St., CINCINNATI, O.,

Are authorized to receive advertisements for this paper. Estimates furnished free upon application.

Send two stamps for our Advertisers' Manual.

W. S. WALKER,

IMPORTER OF

Diamonds, Fine Watches & Jewellery,

ENGLISH AND FRENCH CLOCKS,

SILVER AND SILVER-PLATED WARE,

No. 321 Notre Dame St., Montreal.

THE COOK'S FRIEND

BAKING POWDER

Has become a HOUSEHOLD WORD in the land, and is a HOUSEHOLD NECESSITY

in every family where Economy and Health are studied. It is used for raising all kinds of Bread, Rolls, Pastry, Cakes, Griddle Cakes, &c., &c., and a small quantity used in Pie Crust, Puddings, or other Pastry, will save half the usual shortening, and make the food more digestible

THE COOK'S FRIEND

SAVES TIME, IT SAVES TEMPER, IT SAVES MONEY.

For sale by storekeepers throughout the Dominion, and wholesale by the manufacturer.

W. D. MCLAREN, UNION MILLS, 55 College Street.

THIS PAPER MAY BE FOUND ON FILE AT GEO. P. ROWELL & CO'S Newspaper Advertising Bureau (10 SPRUCE STREET), WHERE ADVERTISING CONTRACTS may be made for it in NEW YORK.

British American

BANK NOTE COMPANY,

MONTREAL.

Incorporated by Letters Patent.

Capital \$100,000.

General Engravers & Printers

Bank Notes, Bonds, Postage, Bill & Law Stamps, Revenue Stamps, Bills of Exchange, DRAFTS, DEPOSIT RECEIPTS, Promissory Notes, &c., &c., Executed in the Best Style of Steel Plate Engraving. Portraits a Specialty. G. B. BURLAND, President & Manager.

The Scientific Canadian MECHANICS' MAGAZINE

PATENT OFFICE RECORD, A MONTHLY JOURNAL Devoted to the advancement and diffusion of Practical Science, and the Education of Mechanics.

THE ONLY SCIENTIFIC AND MECHANICAL PAPER PUBLISHED IN THE DOMINION.

THE BURLAND LITHOGRAPHIC CO.

OFFICES OF PUBLICATION, 5 and 7 Bleury Street, Montreal. G. B. BURLAND General Manager.

F. N. BOXER, ARCHITECT & CIVIL ENGINEER, Editor

TERMS:

One copy, one year, including postage... \$2.00 One copy, six months, including postage... 1.10 Subscriptions to be paid in ADVANCE.

The following are our advertising rates:—For one monthly insertion, 10 cts. per line; for three months, 9 cts. per line; for six months, 8 cts. per line; for one year, 7 cts. per line; one page of illustration, including one column description, \$30; half-page of illustration, including half column description, \$20; quarter-page of illustration, including quarter column description, \$10.

10 per cent. off on cash payments. INVENTIONS AND MACHINERY, &c., or other matter of an original, useful, and instructive character, and suitable for subject matter in the columns of the MAGAZINE, and not as an advertisement, will be illustrated at very reduced rates.

REMITTING MONEY.—All remittances of money should be in the form of postal-orders. When these are not available, send money by registered letters, checks or drafts, payable to our order. We can only undertake to become responsible for money when sent in either of the above ways.

This journal is the only Scientific and Mechanical Monthly published in Canada, and its value as an advertising medium for all matter connected with our Manufactories, Foundries, and Machine Shops, and particularly to Inventors, is therefore apparent.

MR. J. H. BATES, Newspaper Advertising Agent, 41 PARK ROW (Times Building), NEW YORK, is authorized to contract for advertisements in the CANADIAN ILLUSTRATED NEWS at our BEST RATES.

THE BURLAND LITHOGRAPHIC COMPANY

(LIMITED)

CAPITAL \$200,000,

GENERAL

Engravers, Lithographers, Printers

AND PUBLISHERS,

3, 5, 7, 9 & 11 BLEURY STREET, MONTREAL.

THIS ESTABLISHMENT has a capital equal to all the other Lithographic firms in the country, and is the largest and most complete Establishment of the kind in the Dominion of Canada, possessing all the latest improvements in machinery and appliances, comprising:—

- 12 POWER PRESSES 1 PATENT LABEL GLOSSING MACHINE, 1 STEAM POWER ELECTRIC MACHINE, 4 PHOTOGRAPHING MACHINES, 2 PHOTO-ENGRAVING MACHINES,

Also CUTTING, PERFORATING, NUMBERING, EMBOSSING, COPPER PLATE PRINTING and all other Machinery required in a first class business.

All kinds of ENGRAVING, LITHOGRAPHING, ELECTROTYPING AND TYPE PRINTING executed IN THE BEST STYLE

AND AT MODERATE PRICES

PHOTO-ENGRAVING and LITHOGRAPHING from pen and ink drawings A SPECIALTY. The Company are also Proprietors and Publishers of the

CANADIAN ILLUSTRATED NEWS, L'OPINION PUBLIQUE, and SCIENTIFIC CANADIAN.

A large staff of Artists, Engravers, and Skilled Workmen in every Department.

Orders by mail attended to with Punctuality! and prices the same as if given personally.

G. B. BURLAND, MANAGER.