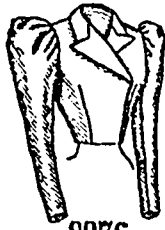


**LADIES' DOUBLE-BREADED ETON JACKET, WHICH MAY EXTEND TO THE WAIST OR NEARLY TO THE WAIST.**

No. 9076.—A different development of this jacket may be seen by referring to figure No. 199 W on page 214 of this publication.

The natty Eton jacket is here illustrated made of golden-brown cloth, stitching and a fanciful arrangement of black braid giving an effective finish. The seamless back is separated by side-back gores from fronts that are fitted by single bust darts. The fronts are lapped in double-breasted style, and reversed in lapels that extend in points beyond the ends of a rolling collar made

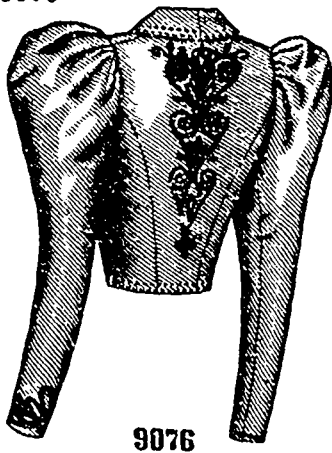


9076



9076

Front View.



9076

Back View.

LADIES' DOUBLE-BREADED ETON JACKET, WHICH MAY EXTEND TO THE WAIST OR NEARLY TO THE WAIST.

with a center seam. The closing is made with hooks and loops. The stylish two-seam sleeves are gathered at the top and puff out effectively. The jacket may extend to the waist or nearly to the waist, as illustrated, the fronts being pointed at the lower edge when reaching to the waist.

While all Eton jackets have general characteristics that are similar, individual designs have features that are distinctly their own; hence all tastes may be suited. Suitable materials are smooth cloths of all kinds, and velvet and moiré. When the latter materials are chosen, jet passementerie or silk ruchings are appropriate trimmings, but braid and stitching are the popular choice for decorating cloth jackets.

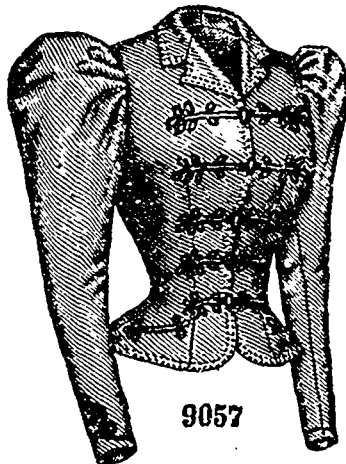
Pattern No. 9076 is in 7 sizes for ladies from

**LADIES' SINGLE-BREADED CLOSE-FITTING MILITARY JACKET. (TO BE MADE WITH SQUARE OR ROUNDING LOWER FRONT CORNERS.) KNOWN AS THE LANCER JACKET.**

No. 9057.—Gray cloth was chosen for making this jacket, which is decidedly English in style and is known as the Lancer jacket. The adjustment of the jacket is perfectly close, and is effected by single bust darts, under-arm and side-back gores and a center seam. Coat-laps and coat-plaits are formed in true coat style, buttons being placed at the top of the coat-plaits, and slight ripples appear on the hips. The fronts are closed with hooks



9057



9057

Front View.



9057

Back View.

LADIES' SINGLE-BREADED, CLOSE-FITTING MILITARY JACKET. (TO BE MADE WITH SQUARE OR ROUNDING LOWER FRONT CORNERS.) KNOWN AS THE LANCER JACKET.

30 to 42 inches, bust measure. For a lady of medium size, the jacket requires 3 3/4 yards of material 22 inches wide. Price of pattern, 25 cents.

and loops and cord frogs, and their lower front corners may be rounding or square, as preferred; they are reversed in small lapels which form wide, short notches with the ends of a rolling coat-collar made with a center seam. The two-seam sleeves are gathered and stand out stylishly at the top. The braid decoration on the sleeves and back and about the curved openings to inserted pockets in the fronts, and machine-stitching at the edges are in accordance with prevailing fancy.

The jacket is exceedingly netty and will be made of both plain and mixed cloth in any of

rows may be used alone, if this finish is preferred. Pattern No 9057 is in 9 sizes for ladies from 30 to 46 inches, bust measure. To make the jacket for a lady of medium size, will require 3 3/4



FIGURE NO. 196 W.—This illustrates LADIES' YOKE-WAIST.—The pattern is No. 9098, price 25 cents.

yards of material 27 inches wide. Price of pattern, 30 cents.

FIGURE NO. 196 W.—LADIES' YOKE-WAIST. FIGURE NO. 196 W.—This illustrates a Ladies' yoke-waist. The pattern, which is No. 9098 and costs 25 cents, is in 11 sizes for ladies from 30 to 44 inches, bust measure, and may be seen made of different materials on page 221.

The pretty waist is here pictured made of white organdy flowered in pink and green shades, and white lace net, with a fitted lining of pink lawn. The net is used for the deep, square yoke, to which the full fronts and full back are joined after being gathered at the top and bottom. The fronts close at the center, while the yoke closes at the left side. A wide, folded ribbon surrounds the waist, girde fashion, and its ends are closed under a fancy bow at the left side of the front. A folded ribbon about the collar closes at the back under a spread bow, and a full double frill of lace rises from the collar with picturesque effect. A self-headed frill of lace follows the lower edge of the yoke, and lace frills trim the wrists of the one-seam sleeves, over which flare lace-trimmed cap frills of the figured organdy.

The waist is particularly dainty in sheer fabrics over a colored lining of silk, perceline, lusterine, etc. It may be made without the lining when gingham, chambray, linen, wash silk and other washable materials of a similar texture are chosen. Lace or embroidered edging and insertion and taffeta, satin or fancy ribbon will always provide a pleasing decoration.

studging  
r trout  
r very  
4  
No 20  
black cloth  
ornamented  
ies from 30  
the wrap  
3 3/4 yards  
is of green  
n, 25 cents.  
ETON  
MAY EX-  
WAIST OR  
WAIST.  
his stylish  
is pictured  
cloth, with  
coration of  
ket is seam-  
r of the back  
-back gores  
d the fronts,  
d by single  
e closing is  
ks and loops  
at the center  
low lapels in  
nts are re-  
rolling collar.  
close-fitting  
thered at the  
f fashionable  
t may reach  
to the waist.  
ing deepened  
it reaches to  
Eton jacket pre-  
may be accom-  
e or different  
of dimity, lawn,  
material for the  
various chev-  
finish is give-  
sizes for ladies  
it measure. T  
dy of medium  
erial 22 inche