

Smith Wool-Stock Co.

219 FRONT ST. E., TORONTO.

Makers of

**WOOL STOCK,
SHODDIES, Etc.**

LEITCH & TURNBULL, Canada Elevator Works,
Queen and Peter Sts.,
HAMILTON, ONT. Patent Safety Hydraulic,
Hand and Power ELEVATORS.
.....Telephone Connection.

GEO. PATTINSON & CO.

PRESTON, - ONTARIO.

Manufacturers of

FINE AND MEDIUM **TWEEDS**

Guelph Woolen Mill Co.,

QUELPH, ONT. LIMITED,

Manufacturers of

**Underwear, Hosiery, Wheeling,
Fingering and Worsted Yarns,
Eiderdown Flannel, Etc.**

Selling Agents—Donald Fraser, Montreal.
E. H. Walsh & Co., Toronto.

PENMAN MANUFACTURING CO.

PARIS, ONT. LIMITED,

Manufacturers of

**Hosiery, Shirts, Drawers,
Glove Linings and Yarns.**

Selling Agents—D. Morrice, Sons & Co.,
Montreal and Toronto.

**ROSAMOND
WOOLEN CO.**

ALMONTE, ONT,

**Fine Tweeds, Cassimeres,
and Fancy Worsted
Suitings and Trouserings.**

JOHN HALLAM

TORONTO.

WHOLESALE DEALER IN
DOMESTIC and FOREIGN **WOOLS**
Sumac, Japonica, etc.

Reproductions Made for Eight
Cents per Square Inch.



Half Tones Made Direct from
Photos.

It Leads Them All.

THE OLDEST,
THE LARGEST,
THE SAFEST,
THE CHEAPEST,

CANADIAN LIFE INSURANCE COMPANY IS

THE CANADA LIFE ASSURANCE COMPANY.

CAPITAL AND FUNDS OVER \$18,000,000.

Write for
Prospectus.

A. G. RAMSAY,
PRESIDENT.

GEO. A. & E. W. COX,
Managers for Toronto
and Eastern Ontario.

WOOL.



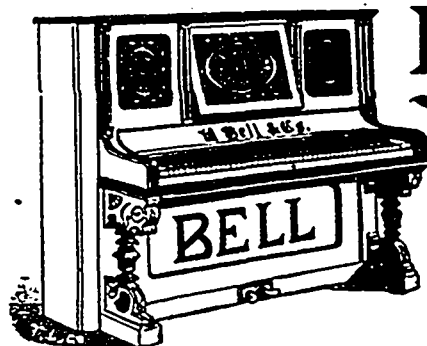
A. T. PATERSON & CO.,

...Merchants...

35 FRANCOIS XAVIER STREET,

Represented by
MR. DAVID GUTHRIE.

MONTREAL.



BELL

HIGH-CLASS

INSTRUMENTS

USED AND RECOMMENDED
BY

LEADING MUSICIANS.

Send for Catalogue.

THE BELL ORGAN AND PIANO CO.

(LIMITED)

QUELPH, - ONTARIO.



**CROSBY STEAM GAGE.
AND VALVE CO.**

Sole Proprietors and Manufacturers of
Crosby Pop Safety Valves, for all kinds of Boilers. Water Relief Valves including
the Underwriter, which is fully approved by the Associated Factory Mutual
Insurance Companies; Crosby Steam Engine Indicators, with Sar
gent's Electrical Attachment; Crosby Improved Steam
Gages, Recording Gages and Patent Gage Testers.
Original Single Bell Chime Whistles.

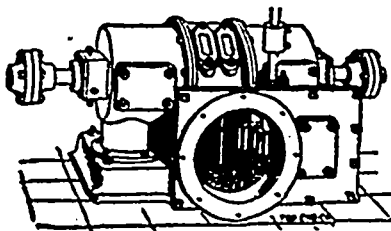
BRANDEN PATENT PUMP VALVES
CLARK'S LINEN FIRE HOSE AND ADJUSTABLE COUPLINGS

All Kinds of Pressure and Vacuum Gages used in the Various Arts

Gold Medal Paris Exposition, 1889
Ten Highest Awards Columbian Exposition, 1893

Main Office and Works..... BOSTON, MASS, U.S.A.
Branch Offices at New York, Chicago, and London, Eng.

Underwriter



**"LITTLE GIANT"
TURBINE**

....FOR ALL PURPOSES....

HORIZONTAL AND VERTICAL.
BUILT IN 44 SIZES.

We guarantee a higher percentage of power from
water used than any other wheel on the market.

Horizontal Type.

Water Wheel Governors, Machine Dressed Gearing, Pulleys, Shafing and Bearings.
Catalogue and Gear List mailed on application. Correspondence Solicited.

J. C. WILSON & CO., - - GLENORA, ONT.