

Pride In Your Garden

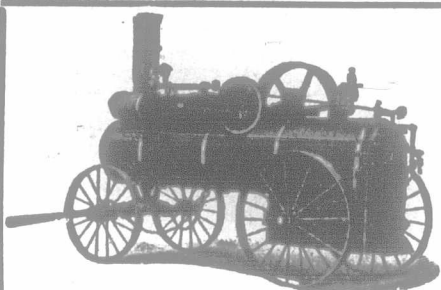
will be natural, and justified, if you plant Ewing's Reliable Seeds and give them proper care. The bumper crops which, for forty years or more, have been grown from

EWING'S Reliable Seeds

are explained by the care which we take to give our customers only specially selected seeds that are clean, fresh, healthy and true to type—seeds that produce grains, roots, vegetables and flowers of which the growers may well be proud. Write for our handsome illustrated catalogue, and if your dealer hasn't Ewing's Seeds order from us direct.

THE WILLIAM EWING CO., LIMITED
Seed Merchants
MCGILL STREET,
MONTREAL.

38



REBUILT ENGINES

We have a splendid stock of good, rebuilt portable engines of different types and by different makers, from 10 to 18 horse-power; all splendid value at the prices we ask for them. Ensure having your silos filled at the proper time by having one of these engines on hand to do the work.

We have several rebuilt traction engines and threshing machines to offer; also portable sawmills and gasoline engines.

ROBT. BELL, E. & T. CO., Limited
SEAFORTH

Perfectly Legal WILL

25c You can make one in your own home without expensive legal costs for 25c. Protect your family and make sure your wishes will be carried out. Get a "CODE" WILL FORM with complete instructions today at our book sellers or stationers or send 25c. to THE COPP, CLARK CO. Limited
501 Wellington St. West, Toronto

Please mention "The Farmer's Advocate."

Questions and Answers. Miscellaneous.

Cow Sucking Herself.

Can you suggest a remedy for cow sucking herself, or if any appliance can be had to prevent her doing so?

X. Y. Z.

Ans.—The following device is quite effectual. Secure a brass bull-ring, and on it hang two ordinary harness-rings. Then insert it in the cow's nose as you would ring a bull. When she attempts to suck, the rings will get into her mouth. Try a common bridle bit in her mouth. Make it fast by attaching a cord to her horns.

Cement and Seeding Queries.

1. How much gravel and cement will it take to lay the walls and floor of a hogpen 20 x 36 feet, wall to be three feet above ground and eight inches thick?

2. How long would it take two men to lay the same?

3. I have a field of wheat sown on timothy sod. Would it be considered good farming to seed it again with clover?

4. If seeded with clover alone, how much would you sow to the acre?

5. Which is the most profitable kind of clover to sow, alsike, common red, or mammoth red?

6. Can you grow more tons per acre of the mammoth red? A. G.

Ans.—About two cords gravel, and between ten and twelve barrels of cement for a three-foot wall, and about two cords of gravel and twelve barrels of cement for the floor.

2. We cannot say.

3. If the land is in good condition, and all sod rotted, you might get a good catch. It would be a rather short rotation, but the clover would do the land good.

4. From eight to twelve pounds. The thicker the seeding the better the chances of a good stand.

5. Usually common red when grown for hay.

6. Not as a general thing.

Cement Work—Ventilation and building Queries.

1. What depth of material would be needed for cementing stable floors with good clay bottom?

2. How much footing would you advise for 8-inch cement-block wall?

3. About how many windows would you put in a dairy barn 60 x 33 feet, windows running up and down?

4. What make of gasoline engine would you advise getting, being about a one or two horse-power?

5. What is the best way of letting fresh air into the stable?

6. Is wood or cement the best floor for a poultry house?

A SUBSCRIBER.

Ans.—1. Four inches will be thick enough with an ordinary strength of concrete. Use one to eight for bottom, and one to four for top.

2. This will depend on the magnitude of the building, but you will have to go below the frost line for depth, and it is advisable to allow 18 to 20 inches in width.

3. Three square feet of glass per cow is considered good lighting. The size of the windows would determine the number largely, but there should be at least six windows on the side.

4. Any make of engine advertised in these columns is good.

5. The King System is illustrated on page 588 of the March 26th issue. The Rutherford System varies from this in that the outlet flue starts from the ceiling and extends straight up through the building. The air enters near the floor in this case, but a modification in vogue empties the air into the stable about 12 to 15 inches above the floor. In some buildings the upper sash of the window is so hung that it will open in and divert the air upwards over the top of the stable. Perhaps the manner of admitting the air near the floor is easiest arranged, and as satisfactory as any.

6. We are partial to cement when well covered with chaff, and dry. Wooden floors harbor vermin.

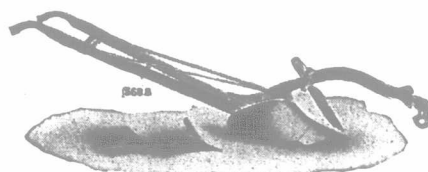
Roofing Economy

QUALITY considered, Galt Steel Shingles make the cheapest roofing. Once laid, they are there to stay. They require no paint nor repairs and will last a lifetime. Made of the finest British galvanized steel, they are rust-proof. Fitted with two nailing flanges and two locks, Galt Steel Shingles are absolutely weather-proof, defying wind, snow, rain and frost.

Write to-day for literature and information which will save you hundreds of dollars. Don't put it off and forget. Simply write the one word "Roofing" on a postcard, together with your name and address.

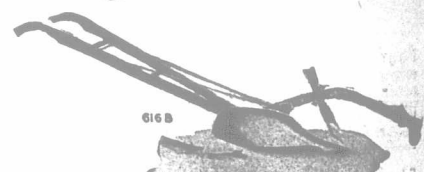
THE GALT ART METAL CO., Limited
150 Stone Road, Galt, Ontario.
Cor. Richard and Pine Sts., Winnipeg, Man.

Famous Fleury Plows



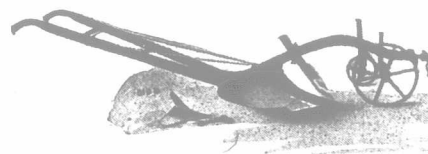
Original No. 21

The most FAMOUS PLOW in ONTARIO. Imitated by nearly all other Manufacturers of Plows. Imitations are generally inferior—in Plows as in other things! Get the "ORIGINAL NO. 21."



No. 5

"SPECIAL" NO. 5, Narrow. General Purpose. FINE in sod—the nearest kind of a furrow.



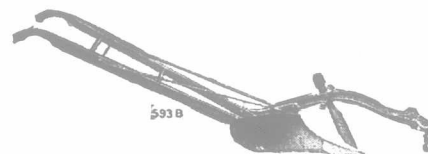
Tinkler Wheel Plow

For the boy—or old man—or inexperienced farm hand. Will run from end to end without holding—and do PLOWING-MATCH work. A Tinkler Wheel Plow—original patented—should have a place on EVERY FARM.



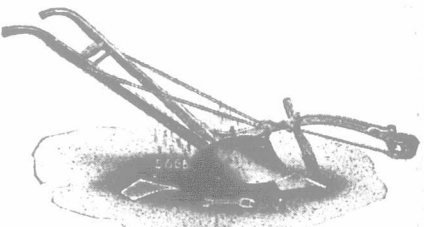
No. 16

Very light two-horse Plow—one-horse attachment if desired—ESPECIALLY adapted to Orchard work.



No. 13

High-class General Purpose, ESPECIALLY good in stubble. Extraordinarily light in draught.



No. 15 A

One-horse Plow—unequalled. Imitated by other manufacturers—POORLY imitated. We give our WORD and GUARANTEE that no other One-horse Plow equals this in EASE and COMFORT in handling or in WORK in garden, orchard or field.

J. FLEURY'S SONS, AURORA, ONTARIO

Medals and Diplomas, World's Fairs, Chicago and Paris

Sold by THE JOHN DEERE PLOW CO., OF WELLAND, LIMITED
77 Jarvis Street, TORONTO

Canadian National Horse Show

Toronto Armouries

APRIL 28th to MAY 2nd, 1914

Prize List now ready.

Entries close April 18. Address:

ALEXANDER MILN, 701 Traders Bank Building, TORONTO, ONT.

REDUCED RAILWAY RATES