

This \$15 Down  
and balance  
in easy  
installments  
without  
interest.

**Engine**

**IT IS EASY TO BUY** the wonderful Gilson "Goes Like Sixty" Gasoline Engine on the above plan. Powerful, simple, durable, dependable, cheapest running, easiest to operate of any engine made. A positive guarantee given with every engine. Ten days' trial—free! satisfactory, hold subject to our shipping directions, and we will return every cent of your first payment. Can anything be better? Made in Canada—no duty. The Gilson has 30,000 satisfied users, proving that it is not an experiment, but a tried and tested engine. Ask your banker about our reliability; founded 1850. Tell us just what work you have for an engine to do and we will name you price and terms on the proper horse power. All sizes. Send for free catalogue. Big money for Agents—write for our proposition.

**GILSON MFG. CO., LTD.**  
101 York Street, Guelph, Ontario Canada.

## WESTERN LAND FOR SALE

In areas to suit purchasers, from 160 acres upwards, situated on or near railways in the Best Wheat, Oat and Stock Growing Districts of

**SASKATCHEWAN AND ALBERTA**  
250,000 Acres to choose from

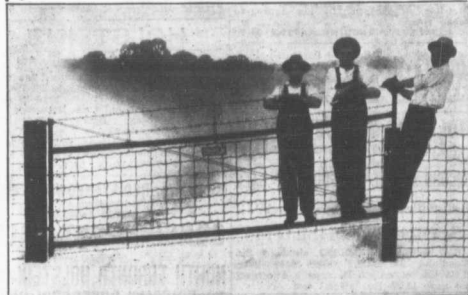
Prices low. Terms generous and helpful. Special inducements given actual settlers, and those requiring blocks for colonization purposes.

Write for particulars. Reliable agents wanted in every county.

**F. W. HODSON, & CO., TORONTO, ONT.**  
Room 100 Temple Building

Branch Office:—North Battleford, Sask.  
During 1910 we sold over 133,400 acres; during the past four years we have sold over 400,000.

## CLIMB ON!



Your weight or a bull's weight won't bend the CLAY GATE. We have tried five men on a 12 ft. CLAY GATE and it didn't even sag.

**THERE IS A REASON FOR IT**

Write for circulars and particulars of our sixty day free trial offer to

**CANADIAN GATE Co., Ltd.**  
29 Morris St., GUELPH, ONT.

It is desirable to mention the name of this publication when writing to advertisers



## SAVE THE RAIN, YES, EVEN THE DEW

Every drop of water is precious around the farm. You would always have plenty of water if your roof shed every drop that fell. Do you realize how much good water the average roof wastes. Notice how the steam rises as soon as the sun strikes the roof after a rain-fall—what is not absorbed by the spongy wooden shingles evaporates—very little reaching the reservoir,—in a light rain, practically none. How different with a **metallic roof**,—it is perfectly dry a few minutes after the rain ceases, for as fast as it falls, **almost every drop runs to the reservoir**—no absorption, no evaporation.

A Metallic Roof is not only valuable in saving rain water but a heavy dew will sometimes bring a barrelful of clean, fresh water off the metal roof of an ordinary house or barn—every drop, a clear gain—meaning so much to you in the summertime when the creeks are dry.

How the farmer's wife appreciates the *clean, soft water* that flows from a metallic roof—so different from the murky, brown fluid, made so impure from draining through the old moss, dust and dirt that quickly collects on the ordinary wood shingle roof.

## Eastlake Metallic Shingles

not only make a clean roof but are absolutely **Lightning, Rust, Fire and Weatherproof**. They can be laid by yourself or anyone cheaper and quicker than any other shingle, and will last a lifetime. Roofs shingled with **Eastlake Steel Shingles 25 years ago** are in perfect condition to-day—an actual test—the best guarantee.

Write us, enclosing measurements of your roof for estimates of cost. Let us quote you on rat and mice proof sheet metal granary lining.

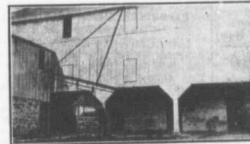
"A Metallic Roof and Galvanized Corrugated Iron Siding on your barn make it positive proof against fire from outside sources, and greatly reduce your insurance rate."

—The Philosopher of Metal Town.

WRITE US, THE MANUFACTURERS

The **Metallic Roofing Co. Limited**  
1905  
TORONTO & WINNIPEG

## BARN WORK NOW A SNAP



With the BT Litter Carrier installed in your barn you do away with hard, disagreeable, tedious work. The BT Litter Carrier saves time, trouble and expense. It carries the manure from the gutters to the shed or pile in a fraction of the time it formerly took. No matter how many coops you have, or what it costs you with the wheelbarrow and pitchfork method to clean your barn, the BT Litter Carrier will save you half the expense.

**ONE WAY TO INCREASE PROFITS**

In any business the most important step toward increasing the profits is in the reduction of expense. Farming is a business, and the BT Litter Carrier, together with the whole BT Equipment, is planned to increase farm profits by reducing stable expenses.

## THE "BT" LITTER CARRIER

is so simple in its construction that there is nothing on it to get out of order. It has no worn gears to wear out and owing to the straight sprocket chain connection used for lifting, it elevates much more easily than any other carrier. The carrier is windlassed by a crank wheel and there is no noise or rattle as with a chain lift. The bucket is made of 18 gauge galvanized steel—four gauges heavier than others use. The track is 12 inches in depth—the next deepest is only 7 1/2 inches. It will carry a much heavier load than any other and is more easily erected. These are only a few of the reasons why more BT Litter Carriers were sold in Canada last year than all other makes combined. Let us tell you more of them!

Now is the time when a litter carrier is most useful and you should get information and prices at once. Our catalogue is free and will be mailed to anyone interested on request. Write us to-day.

**BEATTY BROS., Fergus, Canada** We also manufacture Steel Stalls, Stanchions and Hay Ties.

It is desirable to mention the name of this publication when writing to advertisers