

PLATE VI.

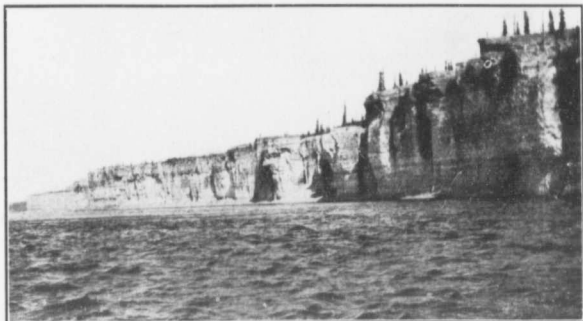


Photo by Bishop Breynault, O.M.I.
"THE RAMPARTS" (vertical walls of limestone and shale 125 to 250 feet high) Mackenzie River, near Fort Good Hope. At this point the river suddenly contracts from 3 miles to 500 yards, but in high water there is no sign of a rapid.



FORT MCPHERSON (Lat. $67^{\circ} 27' N.$). Taken on July 12 at midnight. About one-third of the sun is above the horizon ($1 \frac{5}{8}$ inches from left side of picture). Exposure 2 minutes.



Running a partly loaded scow over the Grand Cascade of Athabaska River. The bed of the river is limestone, and the fall is about six feet. In high water full loads are run over the Cascade.

Journal of the Royal Astronomical Society of Canada, 1915