

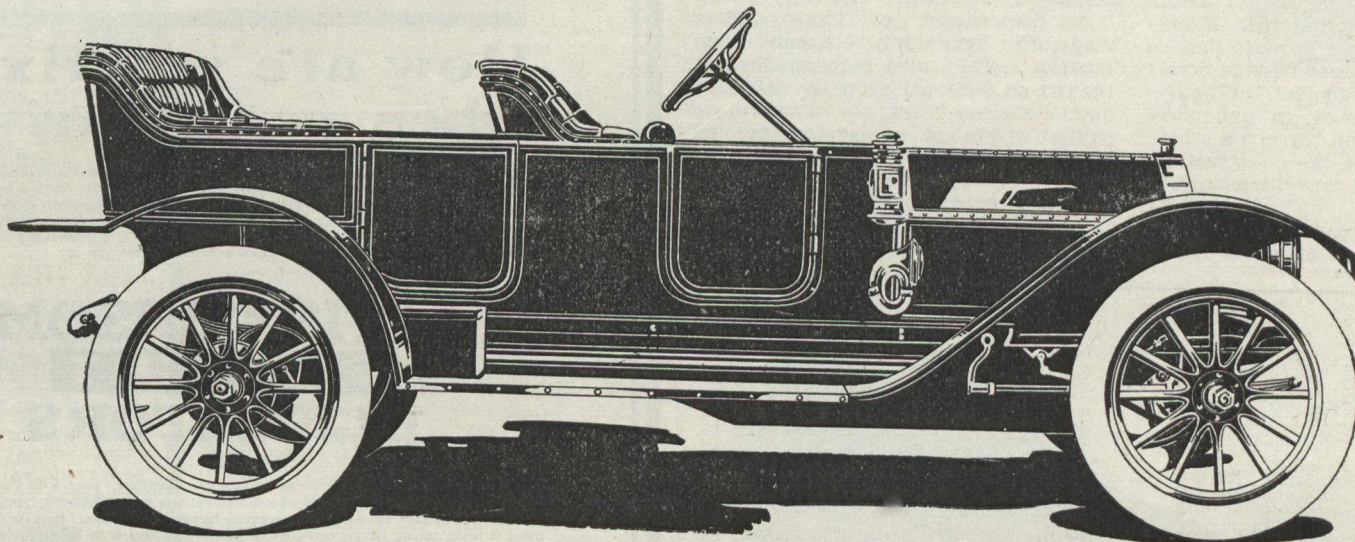
**SPECIFICATIONS MODEL J.M.**

**AXLES:** Front, I beam section; Rear, Semi-floating.  
**BRAKES:** Two separate independent sets on rear wheels.  
**CARBURETOR:** Schebler.  
**CLUTCH:** Leather-faced cone.  
**COOLING:** Centrifugal pump.  
**DRIVE:** Propellor Shaft.  
**FUEL SUPPLY:** Gasoline, 15 gallons.  
**IGNITION:** Jump spark with magneto.  
**LUBRICATION:** Plunger pump, Oil supply in crankcase, 2 gallons.  
**MOTOR:** Horse Power, 45-50; Bore, 4½ inches; Stroke, 5 inches; Cast en bloc.  
**SPEED ON DIRECT DRIVE:** 2.70 M.P.H.

**THE****Schacht****LINE FOR 1912****SPECIFICATIONS MODEL J.M.**

(Continued)

**SPRINGS:** Special alloy steel; Front, Semi-elliptic; Rear, Three-quarter elliptic.  
**STANDARD EQUIPMENT:** Mea Magneto, two gas lamps, two oil side and one rear lamp, jack, horn, all tools, pump and tire repair outfit, top and windshield.  
**STEERING:** Worm and sector, 18-inch wheel.  
**TIRES:** 34 x 4 inches.  
**TRANSMISSION:** Selective, 3 speeds forward and reverse; Reverse, 1 speed change.  
**WEIGHT:** 2,750 lbs.  
**WHEEL BASE:** 120 inches.  
 Left-hand Drive; Gear Control and Emergency Brake in centre of car on all pleasure models.



1912 MODEL J. M. TOURING CAR, 120 in. WHEEL BASE, 7-PASSENGER, 45-50 H. P., PRICE \$2,450

**I**n our introductory advertisements we did not dwell specifically upon any of the outstanding features of the Schacht Cars--We merely gave illustrations and let the specifications speak for the car.

In placing our 1912 Cars on the market, we are offering for sale a line [manufactured by a Canadian Company, with exclusive Canadian Capital] of which every Canadian can be justly proud.

The Schacht car is not a low-priced car, and yet when everything is considered, it is the most inexpensive car on the market. With its powerful motor, [cast en-bloc] having a 4 1-2 in. bore and 5 in. stroke, generating 50 H.P., A. L. & A. M. rating--an engine so perfectly and beautifully balanced that the driver is enabled to throttle the car down to a speed on direct drive [high gear] as low as two miles an hour, and with the same car attain a maximum road speed of 70 miles an hour. The motor, equipped with the Peerless Mea Magneto has made the Schacht car famous as a hill-climber. No other car on the market can boast a better hill climbing record than the Schacht.

The Schacht, Model J. M. at \$2450, fully equipped combines in itself the specifications and qualities of cars ranging from \$3750 to 5000. The long wheel base, the large wheels, the roomy driving seat and five passenger tonneau has been hereto-

fore found only in the highest priced cars. In the Schacht for 1912 we have incorporated the left hand drive and centre control, enabling the driver to use the necessary right hand to operate his gear control and emergency levers.

Due to the perfection of the Mea Magneto we have been enabled to dispense with the dual ignition--Such a hot high tension spark being produced at the first movement of the Magneto, that only a quarter turn of the crank is necessary to start the motor.

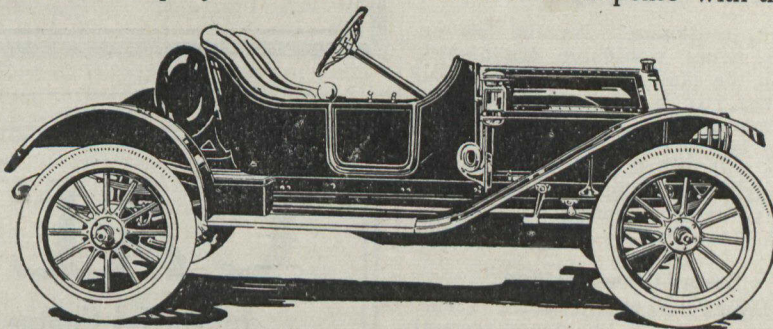
In addition to the standard equipment, such as five lamps, tools etc., we are equipping our cars with English Mohair top with envelope, Windshield and Speedometer. Schacht Cars

have all bright parts nickel plated and our standard color is deep Royal blue.

We stand ready to verify all our statements, and demonstrations with either the pleasure or commercial models, will be gladly made upon request.

We are now ready to close dealership contracts for the season of 1912 and all communications in this connection should be addressed to the Salesmanager, Mr. J. S. Innes.

Intending purchasers and dealers will find our complete line on display at the Canadian National Exhibition, in the Transportation Annex.



1912 Model 112 F.L. Roadster--110 in. Wheel base--45-50 H.P.--Price \$2150. Same Spe. as model J-M.

## The Schacht Motor Car Company of Canada, Limited

General Offices and Works : SANFORD AVE. S., HAMILTON, ONT.

Toronto Salesrooms.

Pending the completion of our Show Rooms and Garage we have temporary Show Rooms at 315 Yonge Street.