

**Hotel Directory**

**GRAND UNION HOTEL**  
Toronto, Canada.  
Geo. A. Spear, President.  
American Plan, \$2-\$3. European Plan,  
\$1-\$1.50.

**PALMER HOUSE**  
TORONTO : CANADA  
H. V. O'Connor, Proprietor.  
Rates—\$2.00 to \$3.00.

**CALGARY, ALBERTA, CAN.**  
**Queen's Hotel** Calgary, the commercial  
metropolis of the Last  
Great West. Rates \$2.00 and \$2.50 per day.  
Free 'Bus to all trains.  
H. L. Stephens, Prop.

**HOTEL MOSSOP**  
Toronto, Canada. F. W. Mossop, Prop.  
European Plan. Absolutely Fireproof.  
RATES:  
Rooms without bath, \$1.50 up.  
Rooms with bath, \$2.00 up.

**THE NEW FREEMAN'S HOTEL**  
(European Plan)  
One Hundred and Fifty Rooms.  
Single rooms, without bath, \$1.50 and  
\$2.00 per day; rooms with bath \$2.00 per  
day and upwards.  
St. James and Notre Dame Sts., Montreal.

**THE NEW RUSSELL**  
Ottawa, Canada.  
250 rooms.  
American Plan, \$3.00 to \$5.00  
European Plan, \$1.50 to \$3.50  
\$150,000 spent upon Improvements.

**QUEEN'S HOTEL, MONTREAL**  
\$2.50 to \$4.00. American Plan.  
300 rooms.

**KING EDWARD HOTEL**  
Toronto, Canada.  
—Fireproof—  
Accommodation for 750 guests. \$1.50 up.  
American and European Plans.

**THE TECUMSEH HOTEL**  
London, Canada.  
American Plan, \$3.00 per day and up. All  
rooms with running hot and cold water, also  
telephones. Grill room open from 8 to 12  
p.m.  
Geo. H. O'Neil, Proprietor.

**LA CORONA**  
A Favorite Montreal Hotel, 453 to 465 Guy St.  
Room with use of bath, \$1.50 and \$2.  
Room with private bath, \$2, \$2.50 and \$3.  
Cafe the Best. La Corona and its service  
acknowledged Montreal's best, but the charges  
are no higher than other first-class hotels.

**The Canadian  
Courier**

A National Weekly

Published at 12 Wellington St. East, by the Courier Press, Limited

VOL. XII.

TORONTO

NO. 22

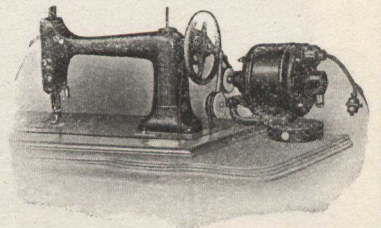
**CONTENTS**

- Dedicating a Sikh Temple ..... By Walter W. Baer.
- Principal Peterson of McGill ..... By Augustus Bridle.  
Fifteenth in Series on "Personalities and Problems."
- Saving the One Child in Four ..... By M. L. Hart.  
With Pictures of the Child Welfare Exhibition in Montreal.
- News Features ..... Photographs.
- A British Broker's Daring ..... By Norman Patterson.
- Men of To-day ..... Word Pictures and Photos
- Will There Be a General Election? . By a Politician.
- The King of Montenegro ..... Two Pictures.
- Madame Aubin's Gramophone ..... By Jas. F. B. Belford.
- Why Willie and Lillie Were Late . By Estelle M. Kerr.
- His Little Girl, Serial ..... By L. G. Moberly.
- Money and Magnates ..... By Staff Writers.
- Reflections ..... By the Editor.

**Sewing  
Machine  
Motors**

For Tailoring Shops,  
Dressmakers,  
The Home.

SAVE TIME  
GIVE BEST RESULTS  
EASILY MANAGED

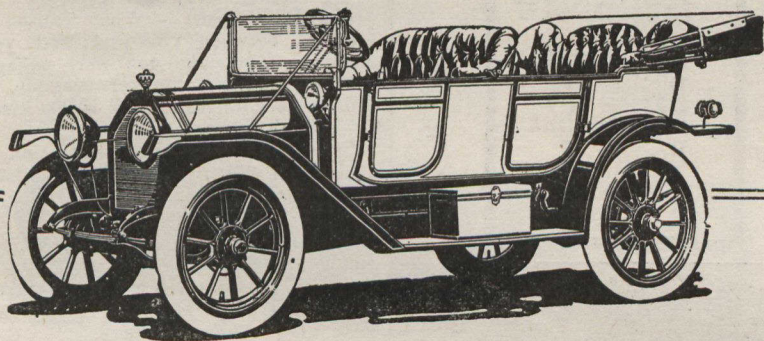


**CANADIAN  
WESTINGHOUSE  
COMPANY, LIMITED**  
Hamilton - - Ontario

Vancouver, Calgary, Winnipeg, Toronto, Montreal.  
Ahearn & Soper,  
Ottawa, - - Halifax.

**GOOD RELIABLE GUNS**

at Wholesale Prices. Send for free 200  
page Catalogue of Guns, Rifles, and  
Sporting Goods.  
T. W. BOYD & SON, 27 Notre Dame St. West,  
MONTREAL.



**E**IGHT New Refinements in the 1913 Russell "30" make it the ideal--the perfect--  
type of valve engine car.

No other car has all these refinements, for the simple reason that no other plant in Canada  
has the resources or the equipment to build them.

The 1913 Russell "30" alone contains EVERY known improvement and refinement that  
makes for the supreme comfort and simplicity of automobiling.

It is the ultimate--the ideal--Canadian car.

If you are interested in it, write to West Toronto for some interesting explanatory literature.

**PRICES FULLY EQUIPPED**

Russell "30" Model "R" 1913 Touring Model	\$2,500
Russell "30" Model "R" 1913 seven-passenger	\$2,600
Russell "30" Model "E" 1913 Torpedo Model	\$2,600
Russell "30" Model "E" 1913 Torpedo Roadster Model	\$2,550

All prices f. o. b. Factory.

**Briefly, the eight new refinements are**

1. Absence of all working parts on the body, allowing unbroken graceful lines to sweep the whole length of the car.
2. New self-starter; electrically operated. Turn the switch, and your car is ready to go.
3. Electric lighting by current generated in car's own dynamo. Press a button and you "light up."



4. 36-in. wheels and 4-in. tires, a combination to absorb all shocks and cause less wear on tires.
5. Demountable rims so that road repairs may be avoided.
6. A spare rim with each car.
7. Motor fresh air pump driven by the car's own power.
8. Electrically lighted speedometer and clock in each car.

Also Makers of the Famous Russell-Knight Car

**Russell Motor Car Co., Limited**  
WEST TORONTO

BRANCHES AT---Toronto, Hamilton, Montreal, Winnipeg,  
Calgary, Vancouver, Melbourne, Aust.

**Half Sections are Time-and-  
Step-Savers**



The convenience and utility of "Office Specialty" Half Sections have made them exceedingly popular with many office men.

A small stack of Half Sections may be placed beside or close to your desk in which you can keep your private papers and business records to which you make constant reference, thus saving the trouble of going to the "general" file for the papers you require.

Our Half Sections are made to accommodate every size and style of business documents. Ask us to send our folder No. 809, which illustrates and describes our complete line.

Head Office:

97 Wellington St. W., Toronto

Branches: Halifax, Montreal, Ottawa, Winnipeg, Calgary and Vancouver.

Representatives: St. John, Quebec, Hamilton and Regina.

Factories: Newmarket, Ontario.

