

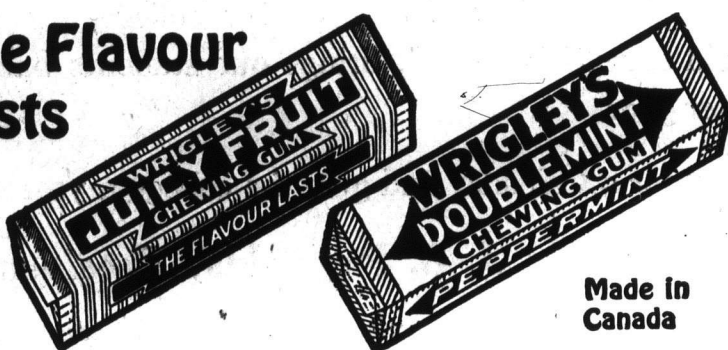


Airmen In the Great War

are using **WRIGLEY'S** regularly. It steadies stomach and nerves, allays thirst, puts "pep" into tired bodies. Aids digestion. Lasting refreshment at small cost.

Chew it after every meal

The Flavour
Lasts



Made in
Canada

Combing!

LADIES—We make your combings into switches, any quantity, for... **\$3.00**

Satisfaction Guaranteed

New Hair added to
Combing if desired

We carry a full line of
TOILET GOODS
10c. postage for mailing.

**Elite Hairdressing
Parlors**

207 Enderton Bldg. WINNIPEG

HAIR GOODS

Our 1917 Catalogue contains full particulars and prices of Transformations, Wigs, Toupees, Curls, Switches, etc., also a high-grade line of Skin-Foods and Cosmetics.

WRITE TO-DAY FOR A COPY

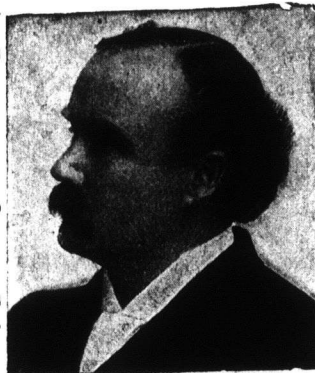
SEAMAN & PETERSEN
NEW YORK HAIR STORE

301 Kensington Bldg. WINNIPEG

When writing advertisers, please mention
The Western Home Monthly

CANCER

R. D. Evans, discoverer of the famous Evans' Cancer Cure, desires all who suffer with Cancer to write to him. The treatment cures external or internal Cancer.



R. D. EVANS Brandon Man.

RANKIN'S
HEAD OINTMENT
quickly kills all nits and vermin in the hair. It is double the strength of any other but perfectly safe to use and will not injure the most delicate skin; nourishes and beautifies the hair.
In 15c. & 25c. sizes. Extra large size 50c.
Of all Chemists.
PARKE & PARKE, Hamilton, Ontario.
RANKIN & CO., Kilmarnock, Scotland.
Established over 100 years.

Fashions and Patterns

A New and Pleasing Apron Model—1963—This model is comfortable, with its semi-fitting lines and trim shapes. The skirt is cut in pointed outline at its upper edge, where it joins a gathered waist front. At the back, waist and skirt are cut in one. The pattern is nice for lawn, percale, dimity, brilliantine, alpaca and drill. It is cut in 4 sizes: 34, 38, 42 and 46 inches bust measure. Size 38 requires 5 1/4 yards of 36-inch material. A pattern of this illustration mailed to any address on receipt of 10 cents in silver or stamps.

A Smart and Popular Style—2133—This is a lovely dress for the growing girl and may readily be applied to various combinations of materials. The blouse has tuck plaits in front and back, and is finished with a shaped sailor collar. This skirt is a 5-gored model. The pattern is cut in 4 sizes: 8, 10, 12 and

or serve as a chemise, or chemise petticoat. The pattern is cut in 4 sizes: Small, 32-34; medium, 36-38; large, 40-52, and extra large, 44-46 inches bust measure. Size medium requires 3 1/4 yards of 36-inch material. A pattern of this illustration mailed to any address on receipt of 10 cents in silver or stamps.

A Practical Suit for the Growing Boy—2134—Boys' Blouse and Trousers. This model is ideal for warm weather, with the low neck and short sleeves, and the trousers with straight lower edge. The blouse and trousers may be of the same material, of linen, drill, khaki, galatea, gingham, pique, serge or corduroy, or the blouse may be of linen or other wash fabric and the trousers of serge or cloth. The pattern is cut in 4 sizes: 4, 6, 8 and 10 years. Size 8 will require 3 yards of 36-inch material. A pattern of this illus-



14 years. Size 10 will require 4 1/4 yards of 44-inch material. A pattern of this illustration mailed to any address on receipt of 10 cents in silver or stamps.

A Popular Model—2140—These dresses in "one-piece" effects are very attractive and comfortable. In this instance, plain and figured shantung are combined. The waist portions are plaited and joined to straight skirt sections. The sleeve may be finished without the cuff, in bell style. The pattern is good for all wash fabrics, silk, voile, embroidered and bordered goods. Also for cloth, satin and velvet. It is cut in 6 sizes: 34, 36, 38, 40, 42 and 44 inches bust measure. Size 36 requires 7 yards of 36-inch material. The skirt measures about 2 1/2 yards at the foot. A pattern of this illustration mailed to any address on receipt of 10 cents in silver or stamps.

A Practical, Comfortable and Popular Undergarment—2158—Muslin, cambric, lawn, batiste, satin, silk and crepe may be used for this model. The ruffle supplies fullness at the lower edge. The garment may be finished in drawers style,

tration mailed to any address on receipt of 10 cents in silver or stamps.

A Popular, Simple Model—2151—Girls' dress with sleeve in either of two lengths. This model is such a comfortable style for a school or play dress and so easy to develop. It is nice for dimity, lawn, batiste, gingham, chambray, gabardine, challie, poplin, repp and serge. The pattern is cut in 4 sizes: 2, 4, 6 and 8 years. It requires 3 1/4 yards of 24-inch material for a 4-year size. A pattern of this illustration mailed to any address on receipt of 10 cents in silver or stamps.

A Simple House Dress—2144—This model is splendid for gingham, chambray, linen, lawn or percale, and also nice for gabardine, flannel, cashmere and challie. The closing is at the centre front and the fullness is held at the waistline, over

Internal parasites in the shape of worms in the stomach and bowels of children sap their vitality and retard physical development. They keep the child in a constant state of unrest and, if not attended to, endanger life. The child can be spared much suffering and the mother much anxiety by the best worm remedy that can be got, Miller's Worm Powders, which are sure death to worms in any shape.