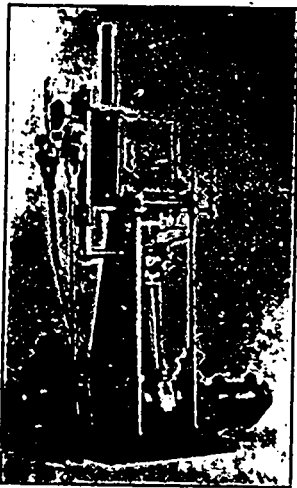


ALBERT BELL ENGINE WORKS
DUNNVILLE, ONT. Makers of
YACHT ENGINES, 1 H.P. to 50 H.P.
Safety Water Tube BOILERS
PROPELLER WHEELS
Stationary Engines and Boilers



WRITE FOR CIRCULARS

KEMP MNFG. CO.
TORONTO.

Galvanizing
 DONE FOR THE TRADE.

GET OUR PRICES.

F. W. Hore's Sons, HAMILTON, ONT.
 Manufacturers of
Wheels, Wheel Materials, Shafts, etc.



**Mills,
 Factories,
 Warehouses**

Are best protected
 against fire by being
 equipped with

**Eddy's Indurated Fibreware
 FIRE PAILS**

We are the only manufacturers in Canada
 of this celebrated ware.

The E. B. EDDY CO., Limited.
 Hull, Montreal, Toronto

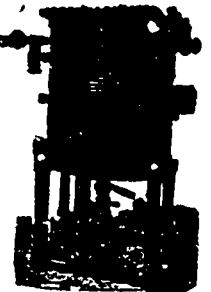


WEBSTER VACUUM Feed Water Heater IN PROPORTION

**MAXIMUM
 EFFICIENCY
 ECONOMY
 DURABILITY
 CONVENIENCE
 SIMPLICITY**

To the extent that Feed Water
 Heaters in general are investi-
 gated and understood the more
 the **WEBSTER VACUUM FEED**
WATER HEATER and PURIFIER
 is appreciated.

**MINIMUM
 ATTENTION
 SPACE
 WASTE
 REPAIRS
 COST**



←—FOR THE REASON THAT IT REPRESENTS—→

BEFORE PURCHASING ELSEWHERE GET A BID FROM US.

Particular experience for ten years in this department of engineering, and
 the fact that over 1,000 Webster Heaters are in use is self-explanatory.

Satisfying particulars, embracing details of construction, materials, operation, and exclusive results
 will be sent on application. Built in several types and construction for special needs and service.

DARLING BROS., RELIANCE WORKS, Montreal.

A. KLIPSTEIN & Co.,

122 Pearl Street, New York.

**Anilines,
 Dyestuffs
 —and—
 Chemicals**

|| DELIVERY MADE AT NEW YORK, MONTREAL OR HAMILTON. ||

WRIGHT & DALLYN, AGENTS,
HAMILTON, ONT.

The Cost of Steam.

To decide which type of boiler will produce steam
 at the lowest cost it is necessary to consider the
 cost of the boiler, the evaporation of water per
 pound of fuel, and the expense of keeping the
 boiler in working order.

Compare our boiler, the "Mumford Improved" with
 a water tube boiler, and it will be found that ours
 has the advantage in all these points.

COST.—Our boiler costs less on account of its
 simpler construction.

EVAPORATION.—Our boiler is internally fired and,
 therefore, more heat is absorbed by the water.
 The water circulation, an important factor in
 evaporation, is similar to and probably more rapid
 than that of a water tube boiler. Tests made by
 disinterested parties, with the same coal, resulted
 in favor of our boiler.

EXPENSE.—The furnace of a water tube boiler requires
 re-lining with fire-brick frequently, a large item of
 expense which is not required with our boiler.

ROBB ENGINEERING CO., Limited, Amherst, N.S.