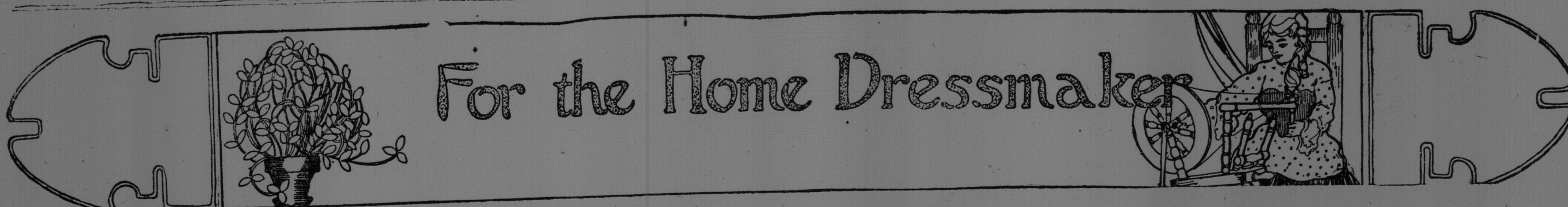
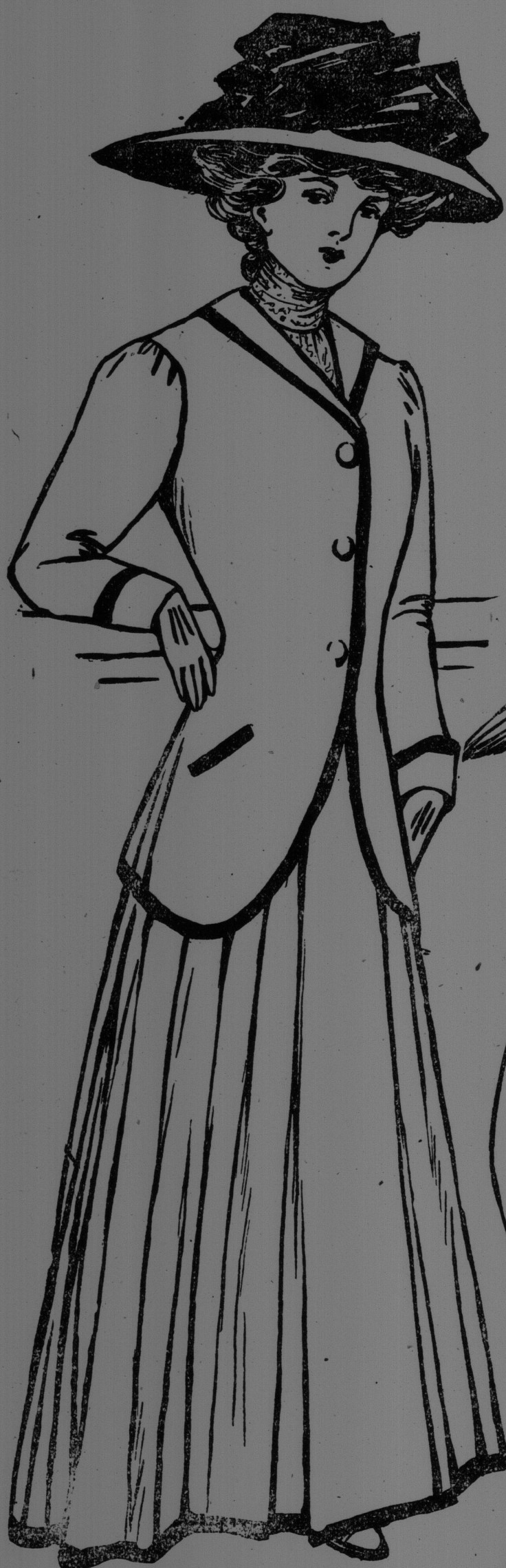


THE ST. JOHN STAR



# For the Home Dressmaker

## THE SCHOOLGIRL'S SUITS



**P**LAIN and practical are most of the natty suits shown for schoolgirls this season. The short loose jacket, and the almost equally short and fitted one, and the half-fitting three-quarter length, are the prime favorites. Striped and checked materials in gray and brown colorings or blue serge are the most practical and fashionable fabrics. The short skirts of these suits are made in one or two forms. The wide skirt is popular and as favored as the circular skirt, though the latter is more generally used for the striped and plaid fabrics. These are often made with bias front and back seams having the design-atching in front. Some of the skirts are made up without trimmings of any kind, while others are shown with a plain or a bias band of the same material. The skirts must be at least five yards around the bottom, and it is for this reason that the bias-front circular skirt is so well liked. As the skirts are cut extremely short for young girls it brings the

foot into great prominence. The half shoe in tan is in vogue over the black shoe in the same shape. The new fall styles show the two kinds of pointed toes, a rather short vamp, a high instep and a straight heel. Girls will very often wear half shoes that have thick extension soles on them to protect the bottom of the foot, and yet their short skirts expose the instep and the ankle—the real vulnerable parts—to the damp and rain. The fall hats for the schoolgirls are most frequently trimmed with wide ribbons, leaped with flowers or two very large wings. The band is very often trimmed with box-pleated ribbon. The sailor and mushroom shapes predominate. The suits shown in the illustration are semi-fitting, all with long sleeves, and can readily be fashioned at home. The first model is dark brown cheviot, braided with flat silk soutache braid three-fourths of an inch wide. The coat is semi-fitting. Three bone buttons in black fasten the front. The collar is a shawl collar, braided, as a man's collar is often

very difficult to make. Collars and cuffs may be of broadcloth, a shade lighter. However, a man's collar would be good in this suit, too. Pleated skirt. Hat of brown felt with darker brown ribbon and low crown. The second sketch is in dark blue cheviot or serge of a heavy weave, with a vest of a dark green. Collar, cuffs and belt in cloth. Skirt can be made of cheviot in blue, or else a plaid green and blue skirt. Hat of blue, with a large green and blue bird. The third illustration is a smart coat suit for a young girl in plain blue cheviot, with collar and cuffs in black velvet. Black bone buttons. The skirt is a ninogored model. The hat is of soft white felt with a large black ribbon bow. The fourth figure is a brown and black striped cheviot. The cuffs, collars and revers of a lighter shade of tan cloth, braided with a black soutache braid one-half inch in width. The skirt is pleated. The large black felt hat is trimmed with a bow of tan ribbon velvet, edged with black velvet ribbon.



### DAINTY CRAVATS AND BELTS

**BELTS** are nothing if not fascinating.

The newest ones are of vivid scarlet scintillant with iridescent or cut steel beads, and always finished with a large buckle.

Metal belts were never more popular. One of the daintiest shows a series of interlocking rings, with a tiny enameled flower in the center of each, and a single flower with its stem and foliage forming the clasp.

There are removable jabots that are both attractive and convenient, and which fasten at the neck and are tucked in with the belt, and behind the plain, plain shirtwaist has become a dressy blouse.

Velvet neck bands have returned almost to the prestige of some years ago, and certainly are worn much more becomingly than they were at that period.

Instead of the velvet bands being made an accompaniment only of the decollete, or even a Dutch neck, they are often put over the high lace or mousseline stock and fastened with a clasp or a straight bow, or even a series of bows, at the back.

### SOME FALL HAT HINTS

**T**HE blizzard of mushrooms has just about spent its force and the storm is bound to subside. The craze was more than a rage, it was a contagion few escaped. For a time everybody found the mushroom style of hat tugging at their heartstrings of desire, and in consequence it found its way into great popularity.

A distinctive style so extremely popular as the mushroom, however, always leaves hosts of modifications that linger long and oftentimes outwit their predecessors in beauty and favor.

Among the newest things shown in trimmings for the winter hats are applications of seaweed and periwinkles. This is not a marine suggestion, but real pieces of hat decoration that are being exhibited for madam's consideration.

The new mushroom sailor is not an improvement on the old style sailor; instead, it reminds one of something in felt that has escaped from the shop untrimmed.

A very small walking hat resembles nothing so much as a cup turned down. With a strip of velvet up one side, a pretty wing on the other it sinks in the middle of some marcel waves and looks particularly stunning.

### LATEST COLORS FOR FALL

**BLUE** will certainly be in high favor this fall and winter.

Navy and royal blue are looked upon as fashion leaders.

Copenhagen blue and Nattier blue, or old blue, are both high-style shades.

The Copenhagen blue is the delft blue.

The Nattier shade is the blue so often found in old tapestries—the shade which resembles a bachelor-button blossom, but much softer.

Brown will also be a favorite—russet, Havana and leather shades.

The coppery browns and the deep mahogany tones will be exceedingly modish.

The silver and dark mouse gray will be especially fashionable.

In green the preference seems to be given to forest green, which is a beautiful leaf tint, not so yellow as olive and a great deal more generally becoming. The bronze greens are also good.

The Bordeaux reds and a beautiful deep American Beauty shade will be worn.

The general tendency, however, is toward darker shades.

The fabrics show indeterminate effects and beautiful minglings of soft, dull shades.

Black will be a conspicuous note in both trimmings and fabrics.

### MANNISH TAILORED SUITS

**T**HE man-made or English-looking tailored suit is wonderfully smart.

Its skirt shows the trotter, or sidewalk length.

It is made according to the individual figure.

It escapes the ground anywhere from three to six inches.

The average length is four inches from the ground.

They are band-trimmed and plain pleated.

Modeled-to-the-figure effects are the proper thing in these costumes.

The jackets show a man-tailored finish.

They are worn with a drop skirt made of mohair, finished with silk ruffles.

It is imperative that this drop skirt be fitted carefully to the figure, as small hips are in style, and there must be no extra fulness at the waist line or a sign of a wrinkle over the hips.

One of the favorite models is a short cutaway, with a lengthening tail in the back extending eighteen inches below the waist line.

The jackets have low-cut revers, showing the under-bodice in front. The revers lie flat, and are finished with velvet collar or one of the cloth.

*Francesca Hope - Paris*