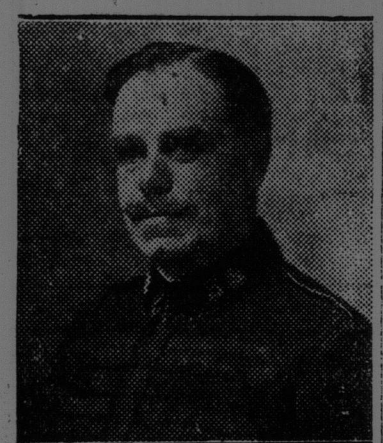


ENTHUSED OVER CANADA'S FUTURE

Commissioner Sowton Visits St. John—Presentation to Mrs. Burton.

In the person of Commissioner Sowton, commander of the Salvation Army forces from Port Arthur to the Maritime seaboard, Newfoundland and Bermuda, Canada possesses a real optimist who is enthusiastic over the future of this country. To a Times-Star reporter this morning, the commissioner declared that Canadians have every reason to be proud of their young and growing country with its matchless natural resources and the indomitable spirit of its people.



COMMISSIONER SOWTON

wonderfully bright outlook for the years to come. Frankly, I will say it is my opinion we will not have as good a winter this coming season as we did last year but I honestly believe that business conditions throughout Canada are on the up-grade although the effect of that will not be apparent until spring. We shall have a splendid spring.

It is three years now since the commissioner landed at St. John with Mrs. Sowton from Sweden to take charge of the Canada East division of the Salvation Army and during that time progress has been made. Commissioner and Mrs. Sowton are here now conducting special services and will leave on Wednesday morning via Digby for Halifax.

Presentation Made.

One of the pleasing incidents of his visit here this time occurred yesterday



MRS. T. A. BURTON.

at the Citadel, Charlotte street, when he presented to Mrs. T. A. Burton, wife of Major Burton, commander of the N. B. and P. E. I. district, a long service badge for a period of unbroken service of 25 years. The commissioner spoke very appreciatively of Mrs. Burton's services during that time.

Mrs. Burton was born in Dundas, Ont., and 27 years ago went to Toronto and became a member of the Salvation Army. Two years later, she became an officer and three years after that married Major, then Captain, Burton. For 18 years, Major and Mrs. Burton have seen service as field officers, having had more than 25 various appointments in Ontario and Quebec as well as two years in charge of the work in Bermuda. While in Montreal during the war period, Mrs. Burton was most active in welcoming home returning soldiers. Major and Mrs. Burton have been engaged in staff work for the last seven years, being stationed at Montreal, Sydney, C. B., and Halifax, coming to St. John last September.

This afternoon and evening, Commissioner Sowton will conduct meetings for young people in the Citadel and tomorrow afternoon, Mrs. Sowton will address a meeting for all women

The polish that won't rub off

Nonsuch LIQUID STOVE POLISH

it sticks—that's our secret

Established, owned & made in Canada for over 30 years by Nonsuch Mfg. Co. Limited, Toronto.

SPENDS NIGHTS AT GRAVE OF HIS WIFE

Berlin Police Put End to Wierd Rite of Grief-Stricken Artist.

Berlin, Nov. 3.—The Berlin cemetery authorities have put an end to a singular rite which a grief-stricken artist carried out at the grave of his wife, who died three years ago.

He had dug a tunnel leading to the side of the grave and had cut a square piece out of the coffin lid.

Every night at dusk he crept through the tunnel and spent the entire time until dawn gazing through this aperture at what were once the features of his wife.

Every night at dusk he brought a wedding ring which he placed again on her fingers, and from time to time he placed flowers on her breast.

Sometimes he brought a hot-water

bottle and placed it inside the coffin. When dawn came he would end his weird vigil, close up the tunnel, and steal away unseen, reaching the street by climbing over the cemetery wall.

CAMPBELLTON MAN AND WIFE GOING ON SIX MONTHS' AUTO TOUR

Traveling in their recently remodelled auto caravan, Mr. and Mrs. S. W. Dimock of Campbellton will leave soon on an extended tour of Canada and the U. S. The motor caravan in which they will make their trip of six months is fitted with the comforts and conveniences of home even to the inclusion of a refrigerator.

FREDERICTON MARKET.

Fredericton prices on Saturday were: Chickens, 20 to 40 cents; Fowl, 20 cents; Geese, \$2.50 to \$3; Lamb, 15 to 23 cents; Mutton, 8 to 10 cents; Veal, 6 to 14 cents; Pork, 12 to 14 cents; Potatoes, per barrel, \$1; Turnips, per barrel, 10 cents; Carrots, per barrel, \$2.50; Apples, per barrel, \$1.50 to \$3; Butter, 88 to 40 cents; Eggs, 50 to 65 cents; Cabbage, each, 5 to 7 cents.

The Windsor Salt FREAKIES

Cut out this puzzle picture, boys and girls, and put the pieces together. When you have it completed, send it to us and we will forward you

FREE BOOK OF CUT-OUTS

Also the story of how Windsor Table Salt and Cut Free Running Salt are made. Both are famous for purity.

Just mention name of this paper when you write to Windsor Salt, Windsor, Ont.

Also Makers of

REGAL TABLE SALT FREE RUNNING

CUT OUT No. 10

Use the Want Ad. Way | Use the Want Ad. Way

Build Beauty

With These Newest Aids

Vauv (for shiny nose) 75c.

Brooks Barley Beautifier 69c

Melba Creams 79c.

Coty's Compacts \$1.58

Coty's Face Powder... 98c.

Hair Youth. Youth Clay.

Black Narcissus Perfume \$1.48

When you want the new things—try

9 Sydney St. **WASSONS** 711 Main St.

Drug Store Service

GLASSES ON WEEKLY PAYMENTS

Optical Parlor at 191 Union Street, UP STAIRS

where you will be able to have your eyes examined by a Registered Optometrist and have glasses specially made for you. These glasses will be delivered to you on the payment of a deposit. The balance to be paid in weekly payments at no extra cost.

J. A. EPSTEIN 11-1 t.f.

Our Weekly Special

A Chesterfield Suite of Exceptional Value.

Spring edge seat, pillow spring back and arms, and loose cushions. The highest grade upholstery of the best quality of Mohair in a design that appeals to everyone. The regular price, \$350.00; marked as a Special \$263.00

THE C. H. TOWNSHEND PIANO CO., LTD.

A PRINCE HELD UP IN PARIS HOUSE

Paris, Nov. 3.—The Prince of the Asturias, 17-year-old heir to the throne of Spain, has been the victim of an armed hold-up in Paris and had a narrow escape. The Prince had been staying in a Paris hotel under the name of the Count of Madrid, and at night he decided to explore old Paris.

He was wandering about, unaccompanied, in the Temple district, one of the oldest parts of Paris, when he was approached by a well-dressed man, who said he knew old Paris thoroughly and offered to show the prince some historic places.

Taking him to the place des Vosges, famous for its connection with Cardinal Richelieu, and relating historical anecdotes of the district, the guide offered to show the prince an old building frequented by King Henry IV. in the Rue des Tournelles. The building is truly ancient and dilapidated, and the only entrance is through a small cafe of uninviting appearance.

The prince went through the cafe and upstairs, and as soon as he entered what his guide called the royal chamber the door was suddenly locked, and two men in sailors' uniforms, levelling revolvers, demanded his money and valuables.

The prince waited a few seconds; then he dashed to the window and called "Help! Help!" Two cyclists who happened to be passing at the time heard his shouts and rushed up to the room. They arrested the men in

C. P. R. TRAIN SERVICE FOR THANKSGIVING DAY

On Thanksgiving Day, Monday November 10th, the early morning express for McAdam leaving St. John at 7:15 Atlantic Time, will make all suburban stops between St. John and Welsford. The night train due in St. John at 9:50 p.m. will also make all suburban stops between Welsford and St. John.

MECCA

THE HOUSEHOLD OINTMENT

25¢

TRY IT

FOR BURNS, CUTS, SKIN DISEASES ETC.

Week-End Specials at Dykeman's

443 Main St. Phone 1109

BUSINESS LOCALS

WE BELIEVE

in giving customers good service and the lowest latitude in prices, at Bassen's Ltd., 17-19 Charlotte St.

Trojans Tea, Tuesday afternoon, 4 to 7, Y. M. C. A. building. Tickets 35c.

I. L. A. LOCAL 278

Regular monthly meeting will be held in hall, 83 Water street, Monday, November 3rd, at 8 p.m. Business, election of officers for the ensuing term, and other important business. All members are requested to attend. By order of the president. 4690-11-4

WANTED, MEN

to buy their winter overcoats, some value from \$12.95 to \$18.00. Look them over at Bassen's Ltd., 17-19 Charlotte St.

BUSINESS CHANGES HANDS.

The well known grocery store which has been conducted by D. W. White for over 30 years will in the future be under the management of his son, Geo. S. White, at the old stand, 474 main street. 4692-11-4

Woodmere Intermediates 9 Tuesday.

Excellent music. 4645-11-4

NOTICE.

All members of the bricklayers' masons' and plasterers' union are requested to attend a meeting in their hall, corner King and Prince William, Monday, Nov. 3, at 8 o'clock. Important business. Thomas Riley, secretary. 4643-11-4

WANTED, PARENTS

to buy their boys' macknaws. Wonderful value for \$4.85 at Bassen's Ltd., 17-19 Charlotte st.

Trojans Tea, Tuesday afternoon, 4 to 7, Y. M. C. A. building. Tickets 35c.

NOTICE.

The annual meeting of the Exhibition Association will be held at the offices of the association, 147 Prince William street, St. John, New Brunswick, on Tuesday, Nov. 11, at 8:30 p.m. H. A. Porter, secretary. 4654-11-12

Home cooking by order. Phone M. 8150-21. 4692-11-4

NOTICE.

Regular meeting elevator employees' Local 1121, I. L. A., Tuesday, Nov. 4, at 8 p.m. All members requested to attend. By order of president. 4693-11-5

Painless Dentistry

FULL SET \$10

as low as \$5

Gold and Porcelain Crowns and Bridges, upwards from

Broken Plates repaired in 3 Hours

MARITIME DENTAL PARLORS

38 CHARLOTTE STREET ST. JOHN, N. B.

Hours: 9 a.m. to 9 p.m. Phone M. 2789

DR. A. J. MCKNIGHT, Prop.

What a Difference Whiter Teeth Make When their hidden beauty is revealed!

A WOMAN may be ever so pretty—but when she opens her mouth and reveals teeth that tell of neglect, beauty flutters away on invisible wings. The average woman is fastidious and keeps her teeth clean. But there is a great difference between merely clean teeth and teeth of pearly whiteness.

All teeth are naturally white. Lurking beneath the surface—however dull, dingy or stained they may be—is a dazzling whiteness only waiting to be released. A little help on your part and understanding are all that stand between you and this greater beauty.

This is a scientific fact, say dental authorities.

Old methods fail

An ordinary toothbrush will not bring out the natural whiteness of teeth. It will not even keep your teeth safe. Nor will ordinary brushing, despite all care.

Look at the teeth of people you meet. Nine times out of ten the sides of their teeth are discolored either by stains or tartar. Why? Because the toothbrushes they use are not correct in design; the bristles merely brush the front surfaces of the teeth. They do not slide in between them or reach into the crevices where decay is always first to start. This probably has been your own experience if you ever had teeth filled.

Dentists have always deplored the fact that there exists such a widespread lack of knowledge of the importance of selecting a toothbrush that cleans the five surfaces of every tooth.

The solution found

All doubt as to the correct type of toothbrush for people to use is now ended. The dentists have spoken. 4,118 of them designed one that you can use with the assurance that it will give your teeth the protection they need and bring out their greater beauty. It is named the Albright Rotary Wedge Toothbrush.

A RUBBERSET CO. product

Andrew Albright, Jr., President, RUBBERSET COMPANY, Ltd., makers of the world-famous RUBBERSET shaving, hair, nail, bath, complexion and paint brushes, perfected this toothbrush. A half-century of brush-making experience is in back of it. Like all brushes made by the RUBBERSET COMPANY, the bristles of this toothbrush stay in—they can't come out.

The tufts are so grouped that a simple rinsing thoroughly cleans the brush. No foreign matter remains among the bristles in which germs may breed to be carried into the mouth. Each brush is sterilized and packed in a sanitary envelope and enclosed in a protecting carton.

Why over 10,000 dentists endorse it

With the tapering slope and wedge-like shape of the bristles in the Albright Toothbrush, no teeth are missed in the cleansing. They reach in between and into every "biting" crevice with ease and certainty.

The bristles stay in—they can't come out.

Proper curve of handles makes it easy to clean backs of front teeth with up-and-down motion.

The tufts are so grouped that a simple rinsing thoroughly cleans the brush. No foreign matter remains among the bristles.

Every brush sterilized, then packed in sealed, sanitary envelopes and enclosed in a protecting carton.

RUBBERSET COMPANY, Limited, Toronto, Ont.

Without obligation on my part, mail me booklet, "About Your Teeth".

Name.....

Street.....

City.....

NOTE: This booklet was written under the direction of a dentist and scientist. It is a guide to mouth hygiene and the proper care of the teeth.

If your dealer has not received his supply of Albright Rotary Wedge Toothbrushes, enclose 40c with this coupon and we will mail both Toothbrush and Book to you.

1-2 Bbl. Bags Best White Potatoes 85c

Choice Orange Pekoe Tea, lb. 52c

1 lb. Block Pure Lard 22c

1 lb. Block Domestic Shortening 20c

4 lbs. New Grey Buckwheat 25c

2 lbs. Large Prunes 25c

3 lbs. Small Prunes 25c

2 15 oz. Pkgs. Seeded Raisins 25c

2 15 oz. Pkgs. Seedless Raisins 25c

4 Bags Table Salt 25c

Quaker Corn Flakes, pkg. 10c

15 oz. Jar Plum Jam 15c

2 lb. Tin Corn Syrup 20c

5 lb. Tin Corn Syrup 47c

6 Cakes Surprise Soap 42c

4 Pkgs. Gold Dust or Washing Powder 25c

6 Rolls Toilet Paper 25c

3 Tins Babbitt's Cleanser for 25c

2 lb. Tin Sliced Pineapple for 20c

2 Tins Clams for 35c

2 Tins Red Clover Salmon for 35c

2 15 oz. Pkgs. Seeded Raisins 25c

2 15 oz. Pkgs. Seedless Raisins 25c

4 Bags Table Salt 25c

Quaker Corn Flakes, pkg. 10c

15 oz. Jar Plum Jam 15c

2 lb. Tin Corn Syrup 20c

5 lb. Tin Corn Syrup 47c

6 Cakes Surprise Soap 42c

4 Pkgs. Gold Dust or Washing Powder 25c

6 Rolls Toilet Paper 25c

3 Tins Babbitt's Cleanser for 25c

2 lb. Tin Sliced Pineapple for 20c

2 Tins Clams for 35c

2 Tins Red Clover Salmon for 35c

2 15 oz. Pkgs. Seeded Raisins 25c

2 15 oz. Pkgs. Seedless Raisins 25c

4 Bags Table Salt 25c

Quaker Corn Flakes, pkg. 10c

15 oz. Jar Plum Jam 15c

2 lb. Tin Corn Syrup 20c

5 lb. Tin Corn Syrup 47c

6 Cakes Surprise Soap 42c

4 Pkgs. Gold Dust or Washing Powder 25c

6 Rolls Toilet Paper 25c

3 Tins Babbitt's Cleanser for 25c

2 lb. Tin Sliced Pineapple for 20c

2 Tins Clams for 35c

2 Tins Red Clover Salmon for 35c

2 15 oz. Pkgs. Seeded Raisins 25c

2 15 oz. Pkgs. Seedless Raisins 25c

4 Bags Table Salt 25c

Quaker Corn Flakes, pkg. 10c

15 oz. Jar Plum Jam 15c

2 lb. Tin Corn Syrup 20c

5 lb. Tin Corn Syrup 47c

6 Cakes Surprise Soap 42c

4 Pkgs. Gold Dust or Washing Powder 25c

6 Rolls Toilet Paper 25c

3 Tins Babbitt's Cleanser for 25c

2 lb. Tin Sliced Pineapple for 20c

2 Tins Clams for 35c

2 Tins Red Clover Salmon for 35c

2 15 oz. Pkgs. Seeded Raisins 25c

2 15 oz. Pkgs. Seedless Raisins 25c

4 Bags Table Salt 25c

Quaker Corn Flakes, pkg. 10c

15 oz. Jar Plum Jam 15c

2 lb. Tin Corn Syrup 20c

5 lb. Tin Corn Syrup 47c

6 Cakes Surprise Soap 42c

4 Pkgs. Gold Dust or Washing Powder 25c

6 Rolls Toilet Paper 25c

3 Tins Babbitt's Cleanser for 25c

2 lb. Tin Sliced Pineapple for 20c

2 Tins Clams for 35c

2 Tins Red Clover Salmon for 35c

2 15 oz. Pkgs. Seeded Raisins 25c

2 15 oz. Pkgs. Seedless Raisins 25c

4 Bags Table Salt 25c

Quaker Corn Flakes, pkg. 10c

15 oz. Jar Plum Jam 15c

2 lb. Tin Corn Syrup 20c

5 lb. Tin Corn Syrup 47c

6 Cakes Surprise Soap 42c

4 Pkgs. Gold Dust or Washing Powder 25c

6 Rolls Toilet Paper 25c

3 Tins Babbitt's Cleanser for 25c

2 lb. Tin Sliced Pineapple for 20c

2 Tins Clams for 35c

2 Tins Red Clover Salmon for 35c

2 15 oz. Pkgs. Seeded Raisins 25c

2 15 oz. Pkgs. Seedless Raisins 25c

4 Bags Table Salt 25c

Quaker Corn Flakes, pkg. 10c

15 oz. Jar Plum Jam 15c

2 lb. Tin Corn Syrup 20c

5 lb. Tin Corn Syrup 47c

6 Cakes Surprise Soap 42c

4 Pkgs. Gold Dust or Washing Powder 25c

6 Rolls Toilet Paper 25c

3 Tins Babbitt's Cleanser for 25c

2 lb. Tin Sliced Pineapple for 20c

2 Tins Clams for 35c

2 Tins Red Clover Salmon for 35c

2 15 oz. Pkgs. Seeded Raisins 25c

2 15 oz. Pkgs. Seedless Raisins 25c