

## THE DISTINGUISHING MARK



Factories and Home Office,  
Indianapolis, Ind.

To install in your mill a set of saws that will suit you in every particular, it is necessary that you be familiar with some means of distinguishing the HIGH-CLASS SAWS from the others. Knowing some such mark you will always discriminate in favor of the saw which bears that mark of QUALITY.

THE ATKINS "TRIPLE A" etched on all HIGH GRADE SILVER STEEL CIRCULAR and BAND SAWS, is the sign which assures QUALITY, EXCELLENCE and absolute SUPERIORITY in Saws. "IF IT'S SILVER STEEL IT'S AN ATKINS." Look for our trade mark.

A little reminder of the "TRIPLE A" in the way of a pretty watch charm to Mill men who write for it. Also our Mill Supply Catalogue. Both free.

### E. C. ATKINS & CO., Inc.

Canadian Branch,  
30 Front St. East, Toronto, Ont.



## Saw Mills

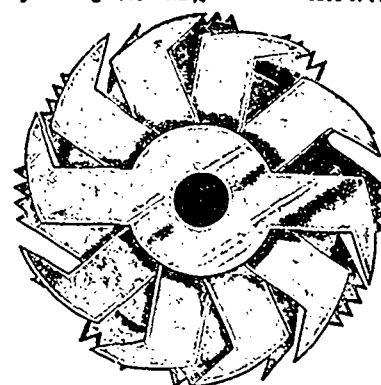
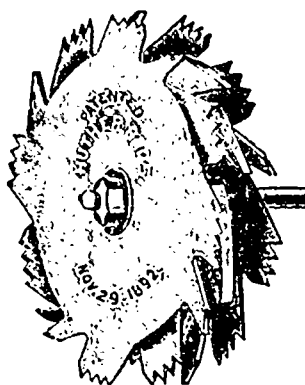
Portable and Stationary

Mill Dogs, Edgers and Mill Supplies  
High Grade Portable and  
Stationary Engines and Boilers

SEND FOR CATALOGUES

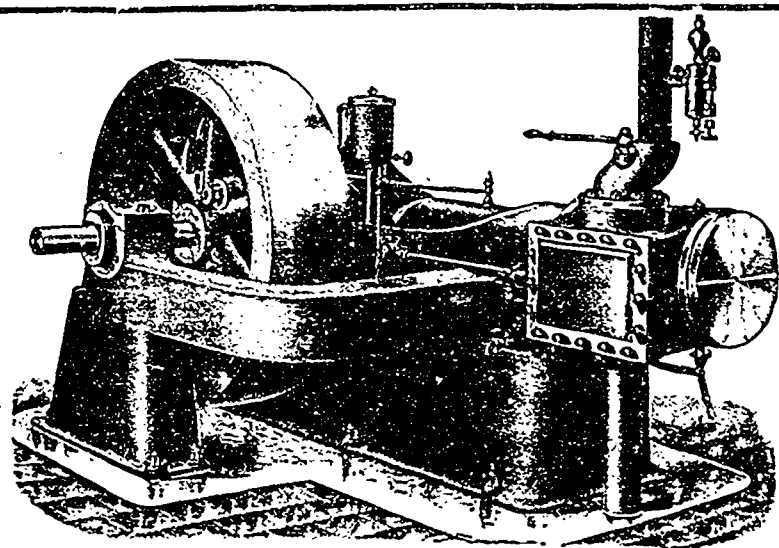
The Robt. Bell Engine & Thresher Co., Limited  
SEAFORTH, ONT., CAN.

HUTHER BROS. PATENT GROOVER OR DADO HEAD  
For cutting any width groove from 1/4-inch to 2 1/2 inches or over



Can be used on any Circular Saw Mandrel. Will cut a perfect groove with or across the grain.

This is the only Dado Head on the market that gives entire satisfaction on all classes of work. No screw adjustment. For different width grooves, simply remove or add inside cutters. Sold by builders and dealers of woodworking machinery in all parts of the United States. Will send on approval in competition with any other make on the market; if not the best return at our expense. HUTHER BROS., Platt Street, ROCHESTER, N. Y., manufacturers of Circular Saws, Morgan Pattern Lock-Corner Box Cutters, Concave Saws, etc.



## GIVES NO TROUBLE

A mill owner writes us: "The 16x16 Robb-Armstrong Automatic Engine installed in our saw mill in 1903 has proved very satisfactory. It has been running steadily five months each sawing season of 1903 and 1904 and has given us no trouble whatever. We drive with it a large rotary, lath mill, patent haul-up, complete sawdust conveyor throughout the mill, live rolls, trimmers, slab saws and planers. We do not have to develop its full power to do this work. The governor is very sensitive, there being only a variation of 3 per cent. when saw is running in and out of cut. We use steam feed to drive our rotary and put through the mill 750 to 800 logs per day."

ROBB ENGINEERING CO., Limited, Amherst, N. S.

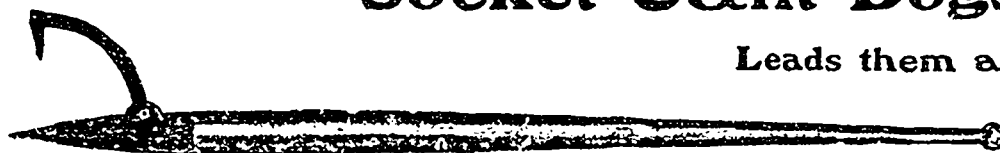
Agents: { William McKay, 320 Ossington Avenue, Toronto.  
Watson Jack & Company, Bell Telephone Building, Montreal.  
J. F. Porter, 355 Carlton Street, Winnipeg.



IN OUR LINE WE LEAD

## McFarlane Patent Wrot Forged Steel Socket Cant Dogs

Leads them all



Used in every Lumbering District from the Atlantic to the Pacific Ocean

Extra Fine Quality Split Rock  
Maple Handles

Round and Duck Bill Peaveys and  
Cant Hooks

Write for quotations. If once used you will never return to the old malleable sockets.