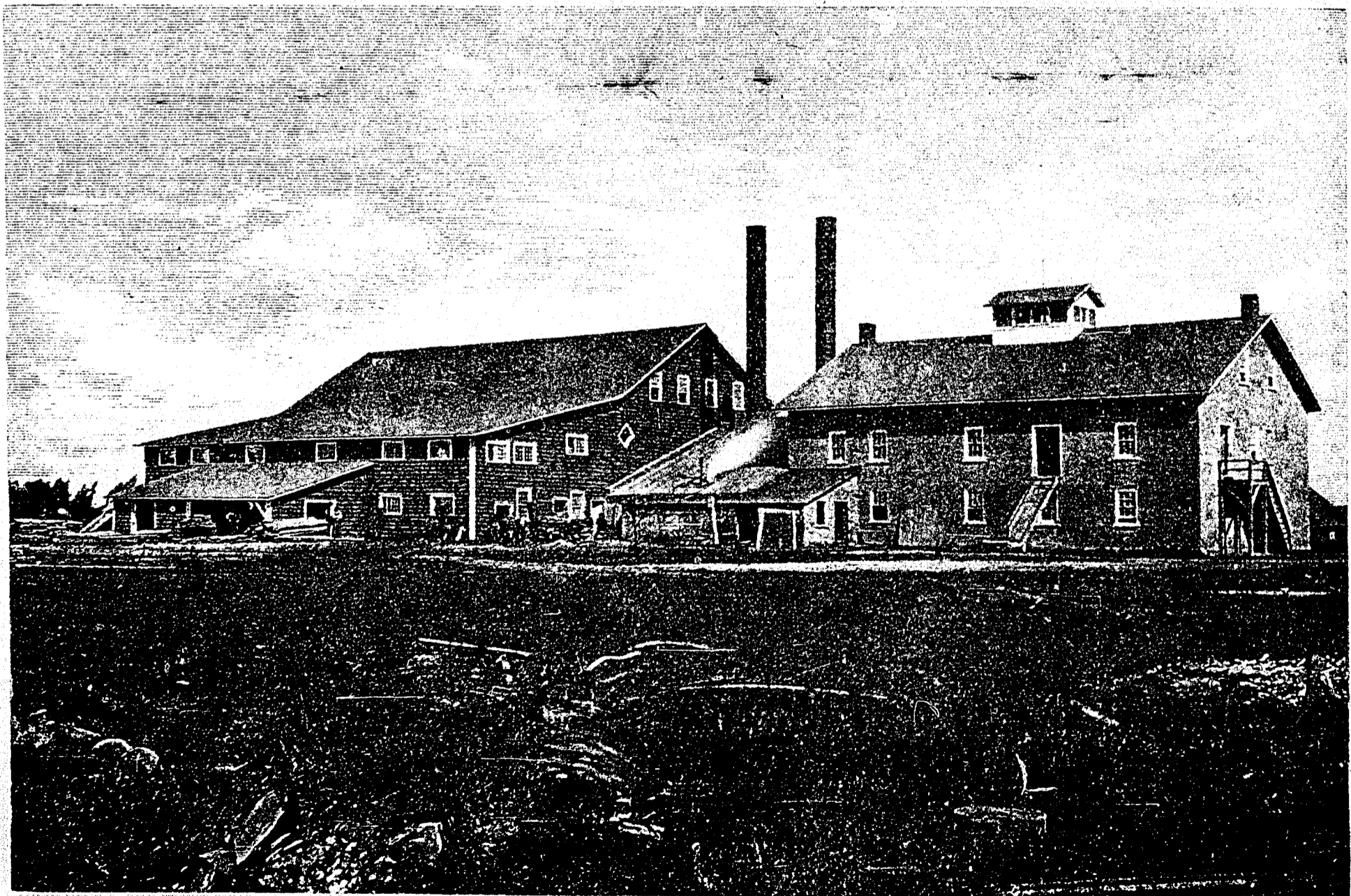


BRIDGE AT PIERREVILLE, ON THE ST. FRANCIS RIVER.—FROM A PHOTOGRAPH BY LEGGO & Co.—SEE PAGE 199.



L. A. SENECA'S MILLS AT PIERREVILLE.—FROM A PHOTOGRAPH BY LEGGO & Co.—SEE PAGE 199.