

teeth are on the two sides together in the ♂ 6, 6 or 7, 5 or 6, 4 to 6, 2 to 4, 2, and in the ♀ 4 to 6, 6 to 8, 5 or 6, 2 to 6, 0 or 2, 0. The sternites of segments 4 to 6 bear in ♀ on each side a row of four bristles, the sternite of the seventh segment a row of seven or eight bristles, there being in the ♂ three bristles on the sternites of segments 3 to 7. At the apex of the seventh tergite there are three bristles in both sexes, the first and third being in the ♂ rather shorter, but somewhat thicker than the lower bristles of the postmedian row, while in the ♀ the third bristle attains nearly the length of the central one, the upper bristle being as short as in the ♂. The stylet of the ♀ is about two and one-half times as long as it is basally broad.

Legs.—There are on the outer side of the hind femur two bristles behind the ventral subbasal sinus, one bristle above the sinus and a small subventral one further back; posteriorly at the apex there are two subventral bristles on the outer side and one on the inner.

The proportional length of the mid and hind tarsal segments is as follows:

Mid tarsus, ♂	17	12	9	6	11
" ♀	18	14	9	6	11
Hind tarsus, ♂	29	17	11	7	11
" ♀	33	19	13	8	11

Modified Segments.—♂. The eighth sternite is rounded truncate at apex, bearing a number of long bristles (Fig. 43, VIII st). The manubrium (M) is acuminate and slender. The process (P) of the clasper reaches to the apex of the finger, its tip being rounded. The finger (F) has the shape of a half crescent, the distal (= ventral) edge being almost regularly rounded, bearing three long and some short bristles. The ninth sternite bears five long bristles and a number of small hairs (IX st). ♀.—The seventh sternite bears a small sinus. On the eighth tergite there are three or

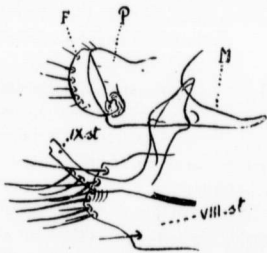


FIG. 43.