

## Illustration Farm Results

(Continued from page 7)

up, we found that the *Tankard Cream Sugar Mangold* produced about 100 bushels more than either the Giant Red or the Yellow Globe.

## Corn

"We planted the Wisconsin No. 7 at the same time that we planted the White Cap, Yellow Dent, and the Leaming. It made a more rapid growth and at the time of cutting, was more mature than the others. We weighed the corn from a certain number of rows from each plot, but, unfortunately, I have mislaid the figures, but remember that the load from the Wisconsin No. 7 plot was the heaviest. Some of our neighbours who were trying it for the first time were well pleased and intend sowing it again.

## Clover Seed

"We have not threshed our clover seed, but will let you know the result as soon as we have. We weighed the clover and there was just about six tons.

"One farmer near here threshed two loads with his threshing machine and got seven bushels. As he just used the cylinder, the same as when threshing grain, he quite likely has as much clover in his chaff and straw as he has in the bin.

## Shipping of Apples

"To-morrow we are going to ship our apples, which are being handled by the Fruit Growers' Association. As this is the first association of its kind in the country, we are very much interested in it and are hoping that it will prove a success. When the apples have all been shipped, I shall be able to let you know what prices we have received and how it compares with the old way of peddling apples around town in barrel lots.

"Hoping that you will be able to make use of these few notes, I remain, Respectfully yours, (Sgd.)—Will C. Barrie."

## NATIONAL TOWN-PLANNING CONGRESS

In June next a National Housing and Town-planning Congress will be held in the city of Toronto. The Commission of Conservation will act as host to the Congress and has secured a generous appropriation from the Dominion Government for that purpose. A special committee of the Commission has been appointed to present a report to the delegates at the Congress, and to draft housing and town-planning legislation which may be recommended as a model to the provincial legislatures. Although the B.N.A. Act placed public health under the Federal Government, it was, later, transferred to the provinces, and hence any federal department can only act in an advisory capacity.

## ANIMALS IN DOMINION PARKS

The Dominion Buffalo Park at Wainwright, Alberta, now contains 1,477 buffalo, 45 elk, 60 mule deer, and 4 antelope. There were 243 buffalo calves born in the Park during 1913.

In the Rocky Mountains Park at Banff, are 81 buffalo, 23 moose, 21 elk, 10 mule deer, 3 mountain sheep and 7 Persian sheep.

In the Elk Island Park, Lamont,

Alberta, there are 41 elk, 81 buffalo, 29 moose, and 52 mule deer.

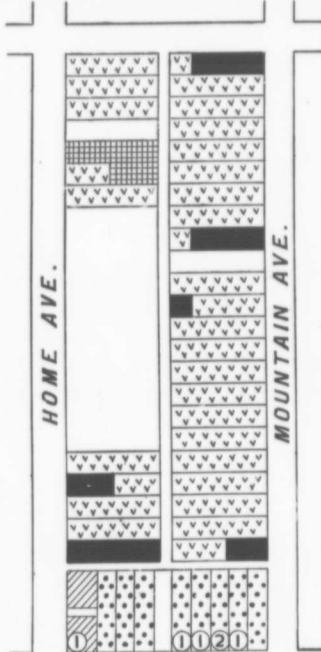
The Parks Branch, which has charge of all Dominion Parks, reports that the buffalo are thriving admirably under these, their natural conditions, and are rapidly increasing in numbers. Game birds are also increasing rapidly, owing to the protection given by the Park authorities.

## SEED SELECTION

Only two and one-half per cent of the 1,000 farmers visited by the agriculturists of the Commission of Conservation in 1913, in connection with the Agricultural Survey were found to be following a systematic selection of seed grain. Fifty-eight per cent keep the best part of the field or crop for seed but often go little towards specially cleaning the seed.

Now is the time to start the fanning-mill. In communities where there are no good fanning mills, it would pay handsomely if the farmers would club together and purchase a mill suitable for grading the seed grain.—F. C. N.

## A FORT WILLIAM BLOCK



▽ ▽ ▽ ▽ ▽	Ruthenians 282	■	Poles 27
▣ ▣ ▣ ▣ ▣	Bulgarians 14	▨ ▨ ▨ ▨ ▨	Italians 9
○ ○ ○ ○ ○	Slovaks 5		Total 337
①	Store	②	Pool Room

Commission of Conservation  
(Courtesy, Canadian Political Science Assoc.)

27 Families.		(Ord. No. 83)	
Married men	94	Double houses	4
Married women	94	Five-family houses	1
Children	70	Three-family houses	0
Widows	1	One-family houses (2 shares)	6
Single women	1	One-family houses, with stores	4
Single men	4	Houses occupied	19
Boarders	180	Houses vacant	6
Total	257	Total	25

\*Here wages are lower than in the West, and fewer immigrant families own their houses. In this block two-thirds of the families rented. In one of the blocks surveyed in Fort William, Ont., two-thirds were owners. The average rent paid by the 15 families was \$11.54 per month. The houses were of many varieties.

†There were 144 rooms and 11 inside toilets. Nearly all had water connection. ‡The average number of persons per house was 18.5, and an average of 9 in each apartment.

## New Provisions in Petroleum and Gas Regulations

By Order in Council, January 14th, 1914, the following new provisions have been inserted in the Dominion petroleum and natural gas regulations:

1. No application for a lease shall be accepted or recorded unless it is accompanied by the full amount of the rental for the first year, viz: 25 cents per acre.
2. Provision is made for the consolidation of operations and expenditure on a group of leases where more than one have been acquired by assignment or otherwise, provided that such consolidation shall only apply to the second and third years of the term of the lease, and shall comprise only such leases as may, at that time, be included in such consolidation. The group shall not exceed an area of 20 square miles, nor shall the locations be separated from each other by more than two miles.

3. Provisions are made with regard to preventing access of water to the oil-bearing formation and that all reasonable precautions be taken to guard against the waste of natural gas.

4. Any company acquiring leases shall at all times be and remain a British company, registered in Great Britain or Canada; the Chairman and a majority of the directors shall, at all times, be British subjects and the Company shall not at any time, become directly or indirectly, controlled by foreigners or by a foreign corporation.

5. The Minister may at any time, if considered necessary by the Government of Canada, assume absolute possession and control of any location, together with plant, equipment, etc.

6. If oil in paying quantities is discovered, the lessee shall work the wells uninterruptedly in accordance with the provision of these regulations and to the satisfaction of the Minister so long as the wells yield oil in paying quantities.—W. J. D.