

DRAUGHTS-CHECKERS

The negotiations for the proposed return match between Halifax and Shubenacadie are progressing satisfactorily and the play will be in this city on the 23rd instant.

SOLUTIONS.

PROBLEM 170.—The position was—
Black men 1, 3, 6, 7, 8, 9, 10, 11, 12, 15; white men 13, 19, 21, 22, 23, 24, 25, 28, 29, 31; white to play. What result? The solution below is one of the many variations that might be played. If any of our readers can discover a weak point in it we shall be pleased to publish it.

22	17	19	10	14	9 a-10	6
1—5	7—32	5—14	15—18			
31	27	6	2	17	10	6
15—18	12—16	11—15	3—7			
23	14	17	14	2	6	2
9—18	16—19	8—12	27—24			
24	20	21	17	21	17	28
6—9	19—23	30—26	23—7			
13	6	29	25	17	13	drawn.
18—22	23—26	2—23				
25	18	25	21 a-6	2		
10—15	26—30	32—27				

a At both these points white might have lost as follows:—
13 9 9 5 20 11 28 19
32—27 12—16 27—24 23—14
black wins.

GAME 59—DOUBLE CORNER.

Played between W. Forsyth and P. O'Hearn; showing how O'Hearn beat the champion on a recent occasion.

9—14 a-8—11	14—23	20—24
22 18 15 8	27 11 18 14	
5—9 4—11	7—23	10—17
25 22 22 18	26 19 21 14	
11—16 9—15	2—7 6—10	
24 19 18 9	32 27 4 7	
16—20 5—14	7—11 3—10	
29 25 25 22	22 18 23 18	
1—5 11—15	11—16 16—23	
18 15 23 18	27 23 28 19	

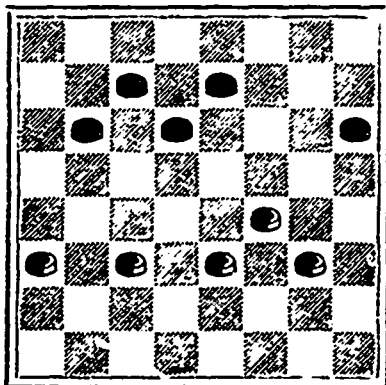
white wins.
a 7—11 was a pitfall avoided at this point which would have allowed white an easy win.

PROBLEM No. 172.

An end game between Muir and Forsyth.

DOUBLE CORNER.

Black men 6, 7, 9, 10, 12.



White men 19, 21, 22, 23, 24.
Black to play and draw.
This is a neat end game worthy the attention of students.

The finest and largest range of

TAILORS' CLOTHS

to be seen in the city is at

STANFORD'S
THE TAILOR,
158 HOLLIS STREET.

Stop that
CHRONIC COUGH NOW!

For it you can find a cure in
Scott's Emulsion of Pure Cod Liver Oil and
Hypophosphites of Lime and Soda.

SCOTT'S
EMULSION

Of Pure Cod Liver Oil and
HYPOPHOSPHITES
Of Lime and Soda.

It is almost as palatable as milk. Far
better than other so-called Emulsions.
A wonderful flesh producer.

SCOTT'S EMULSION

(Put up in a salmon-colored wrapper. Be
sure and get the genuine. Sold by all
Dealers at 50c. and \$1.00.)

SCOTT & BOWNE, Belleville.

Most { PROFIT to the
Grocer,
Economical to
the Housewife,

Who Patronizes

Woodill's
German Baking
Powder

CONFEDERATION

LIFE

ASSOCIATION.

HEAD OFFICE, - TORONTO.

J. K. MACDONALD, Managing Director.

January 1, 1890.

Assets, - \$2,894,502.41

Liabilities, - 2,664,253.75

Surplus, - - \$230,248.66

1889.

New Assurance, \$2,369,500

Total " 17,711,404

Premium Income, 561,293

Total " 721,973

RESULTS OF BUSINESS OF 1889.

Increase in Assurance, - \$948,467

" Assets - - 341,140

" Premiums, - 51,190

" Surplus - - 51,664

Surplus Earned - \$115,689

RATES LOW.

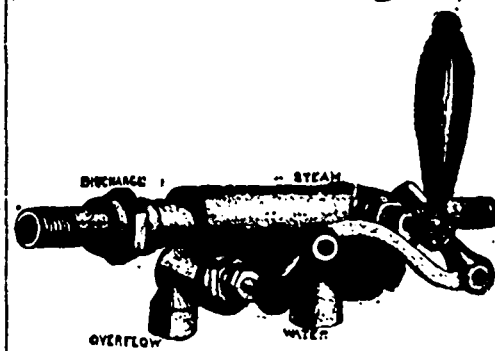
PROFITS UNEQUALLED.

F. W. GREEN,

Manager for Maritime Provinces,

166 HOLLIS ST., HALIFAX.

Hantsport Foundry & Machine Co., Ltd.

KENNEDY
INJECTOR.

Improved Electric Light Engine, Automatic and Plain Slide Valve, Horizontal and Upright Engines and Stationary and Portable Boilers for Stamp Mill, Saw Mill, and all other purposes; Steam Pumps, High and Low Water Alarms and Centrifugal Pumps, Water Wheel, Portable and Stationary Circular Saw Mills, Lath Machines, Shingle Machines, Cylinder Saws, Heading Turners, Planing Machines, Circular Saws and Arbors, Belting, etc.

All Machinery best of its class.

Write for Prices, stating what you wish. ADDRESS

H. F. & M. Co.

HANTSPORT, NOVA SCOTIA.

WILMOT SPA SPRING CO., LTD.
Carbonators.

SPECIALTIES—

Royal Belfast Ginger Ale,
Wilmot Spa Natural Mineral Water.

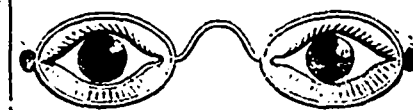
Our "ROYAL BELFAST" is made from the pure Jamaica ginger root and compounded with great skill and care, and WARRANTED absolutely NON-ALCOHOLIC, and we don't hesitate to say, the BEST IN THE WORLD. Our "WILMOT SPA" NATURAL Mineral Water is bottled in quarts and pints (Apollinaris style) directly at the SPRING, thereby retaining all its MEDICINAL qualities for which it is noted, and is securely packed in cases of 50 quart and 100 pint bottles each for shipping and family use. We use the LATEST IMPROVED Machinery, Cylinders and Connecting Pipes lined with Baucher pure block tin, and this insures the goods from contamination WITH LEAD OR COPPER, thereby being ABSOLUTELY PURE.

NOTE.—WE DO NOT PUT UP ANY BRAND OF CHEAP GOODS.

HATTIE & MYLIUS, - Halifax, N. S.

Are our Selling Agents, and all orders addressed to them will receive PROMPT ATTENTION.

WILMOT SPA SPRING CO., LTD.



GOOD I'S

are a blessing, which is often appreciated only when the blessing is lost forever. We

HAVE NO U'S

for the folly of eye-glasses as a mere fad of fashion, but if your eyes are at all weak, the sooner you come to us

FOR GLASS E'S

the better off you will be. Our collection is very large, and contains glasses suited to every defect of vision.

W. H. BANNISTER,
OPTICIAN,

(Graduate of New York Optical College.)

136—GRANVILLE STREET—136

HALIFAX, N. S.

BRITISH AMERICAN HOTEL.

Within Two Minutes Walk of Post Office.

DUNCAN BROUSSARD, - Proprietor,

HALIFAX, N. S.

101 ON PARLE FRANCOISE.

Tea. Tea. Tea.

ARMY AND NAVY DEPOT.

We have just landed a choice lot of

TEAS,

including ORANGE PEKOE,
ASSAM PEKOE, and
SOUCHONG and CONGO.

Our 35c. and 40c. Blends are worth testing.

—ALSO—

LOAF, GRANULATED & MOIST SUGARS;
PICKLES SAUCES, TINNED MEAT
AND SOUPS, GREEN PEAS, TOMATOES,
BEANS, ASPARAGUS, &c.
STILTON, GORGONZOLA, GRUYERE AND
PARMESAN CHEESE, MUSHROOMS,
CRUPLES, &c., and ENGLISH BISCUITS
in every variety, by best makers.

Jas. Scott & Co.

James Roue,

MANUFACTURER OF

GINGER ALE,

LEMONADE,

SODA WATER, &c.

For full particulars address P. O. Box 406 or

WOODS' WHARF, HALIFAX, N. S.