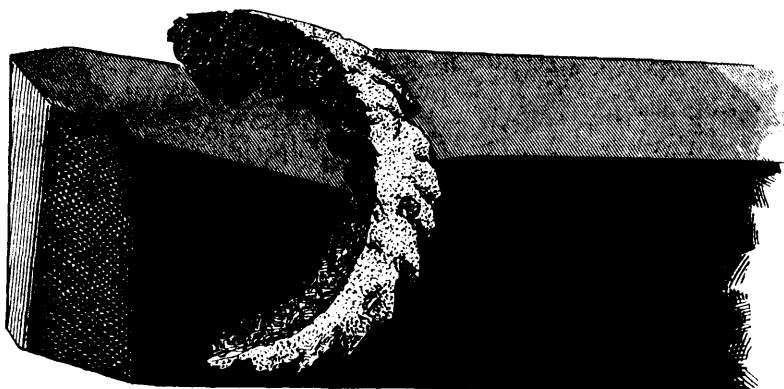


The JESSOP High-Speed . . . TOOL STEEL

Self-Hardening



Is
Unexcelled
for Turning
Locomotive
Tires,
Car Wheels,
Shafting,
Etc.

1-inch cut,
1-inch feed.
Speed 20 to 40
feet per minute.
Tools hardened
by heating
white hot and
cooled in air.

**CAN NOT BE
BURNED.**

WM. JESSOP & SONS, Limited, Sheffield, Eng.

Chief American Office, 91 John St., New York. C. L. BAILEY, Agent, 80 Bay St., Toronto.

DOMINION BRIDGE CO., Limited

MONTREAL, P. Q.

BRIDGES TURNABLES : : : :
ELECTRIC CRANES
ROOF TRUSSES : : :
STEEL BUILDINGS
Structural METAL WORK of All Kinds

Beams, Channels, Angles, Plates, Etc., in Stock

THE ST. THOMAS BRASS COMPANY, Ltd.

MANUFACTURERS OF

Brass Castings For the Wearing Parts of Locomotives.

Journal Bearings For Passenger and Freight Car Service.

Miscellaneous Brass Castings For Engine and Car Work

Works and Office: ST. THOMAS, ONT.

THE FIRSTBROOK BOX CO., LIMITED.

CROSS ARMS, TOP PINS,
AND SIDE BLOCKS,
TORONTO.

T. A. MORRISON & CO.

206 St. James Street, Montreal
New and Second-Hand Contractors' Plant,
Stone Crushers, Concrete Mixers.
1 Baldwin I. C. R. Standard Gauge Locomotive,
35 tons, size 14 x 22, 110 S.P.
30 Dump Cars, narrow gauge, 2½ yards.
—Boilers, Engines, Steam Shovels, etc.—

OCEAN STEAMSHIP AGENCIES

AMERICAN LINE.

PLYMOUTH — CHERBOURG —
SOUTHAMPTON.

Sailing from New York, Saturdays, at
9.30 a.m.

PHILADELPHIA — LIVERPOOL.
Sailing from Philadelphia on Saturdays.

ATLANTIC TRANSPORT LINE.

NEW YORK — LONDON.

Sailing from New York on Saturdays.

DOMINION LINE.

PORTLAND TO LIVERPOOL.
PORTLAND TO AVONMOUTH DOCKS,
(Bristol and Antwerp.)

LEYLAND LINE.

BOSTON — LIVERPOOL.

Sailing from Boston on Saturdays.

RED STAR LINE.

NEW YORK — ANTWERP — PARIS.
Sailing from New York, Saturdays, at 10.30 a.m.

WHITE STAR LINE

NEW YORK — QUEENSTOWN —
LIVERPOOL.

Regular Weekly Service.

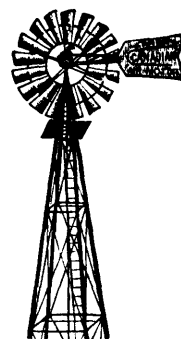
BOSTON — QUEENSTOWN — LIVERPOOL.
BOSTON - MEDITERRANEAN SERVICE

AZORES GIBRALTAR NAPLES - GENOA.

Sub-agents at all principal points in Ontario,
where accommodation can be reserved and
tickets secured.

CHAS. A. PIPON

Passenger Agent for Ontario,
41 King St. East, Toronto.



WINDMILLS
(Canadian Airmotor)

TANKS
TANK
FIXTURES

RAILROAD WORK
A SPECIALTY

Ontario Wind Engine
and Pump Co., Limited
TORONTO, - ONT.

UNIFORM CAPS

FOR OFFICIALS AND
EMPLOYEES OF . . .

Railways, Steamboats, Express
and Telegraph Companies.

MILITARY AND POLICE HELMETS.

Embroidery in Gold and Silver
Bullion for all Purposes.

W. H. CODDINGTON, Hamilton, Ont.