

# CASE

Won all

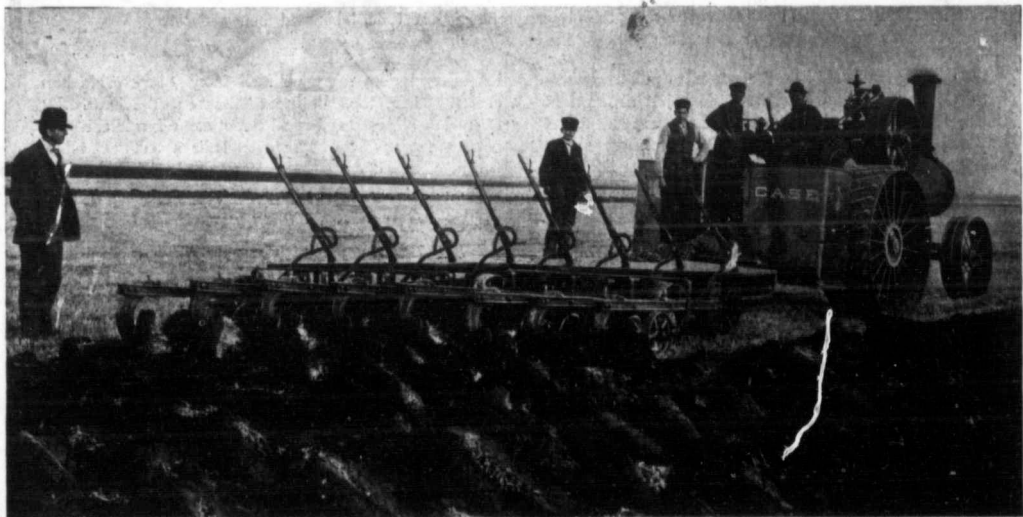
& SWEEPSTAKES

# to PLOWS

in 1913 Winnipeg Plowing Contest

# GOLD MEDALS

# HONORS AWARDED



SCORE SHEET ON PLOWS

Entrant's Name	No. of Bottoms	Draft	Evenness of Draft	Lay of Furrow Slice	Ease of Adjustment and Manipulation	In and Out at Ends	Stops	Straightness of Furrow	Even Cut	Total Score
Case	6	30.25	7	5	8	3	5	4.5	7	69.75
	6	26.9	10	7	9	3.5	5	2	7	70.4
Case	10	34.5	6	4	6	2	5	2	4	65.5
	10	34.9	12	8	5	5	5	4	8	80.9

You, interested in modern farming methods, give a moment to this fact. It is valuable to you, because in this, the only test of its kind in America, the judges, in awarding gold medals in both heavy and light duty classes, found that these Case entries out-classed all competitors. The fact that these plows won medals in both classes under such conditions as are exacted at Winnipeg, establishes beyond question the superiority of the Case-Sattley Tractor Gang Plow. We offer you here with the substantiation of our statement—the proof of this most minute test.

What, for instance, do you demand of a plow? Look in the accompanying table, compare the scores of the Case entries with those of their nearest competitors. The superior qualities of Case-Sattley plows, as here demonstrated, are exactly those qualities which every plowman demands.

They are the same qualities you need in every field you plow. If it is a heavy duty plow, the Case-Sattley 6, 8, or 10 bottom gang plow fills your requirements. If it is a light weight the new Automatic Lift tractor gang plow in 4 and 6 bottoms meets your demands. The figures of Winnipeg do not describe to you our exclusive features of design, such as the spring hitch, automatic dodge, the improved break pin and other qualities not found in other gang plows. Our catalog describes these details in full, it is yours for a post card.

Start in this fall to do tractor gang plowing. Compare your cost sheet with that of horses. You will be glad you made the change.

May we give you further information?

## J.I. CASE THRESHING MACHINE CO. INC.

741-791 State St. RACINE, Wis., U.S.A.

Canadian Branches, Toronto, Winnipeg, Saskatoon, Regina and Calgary