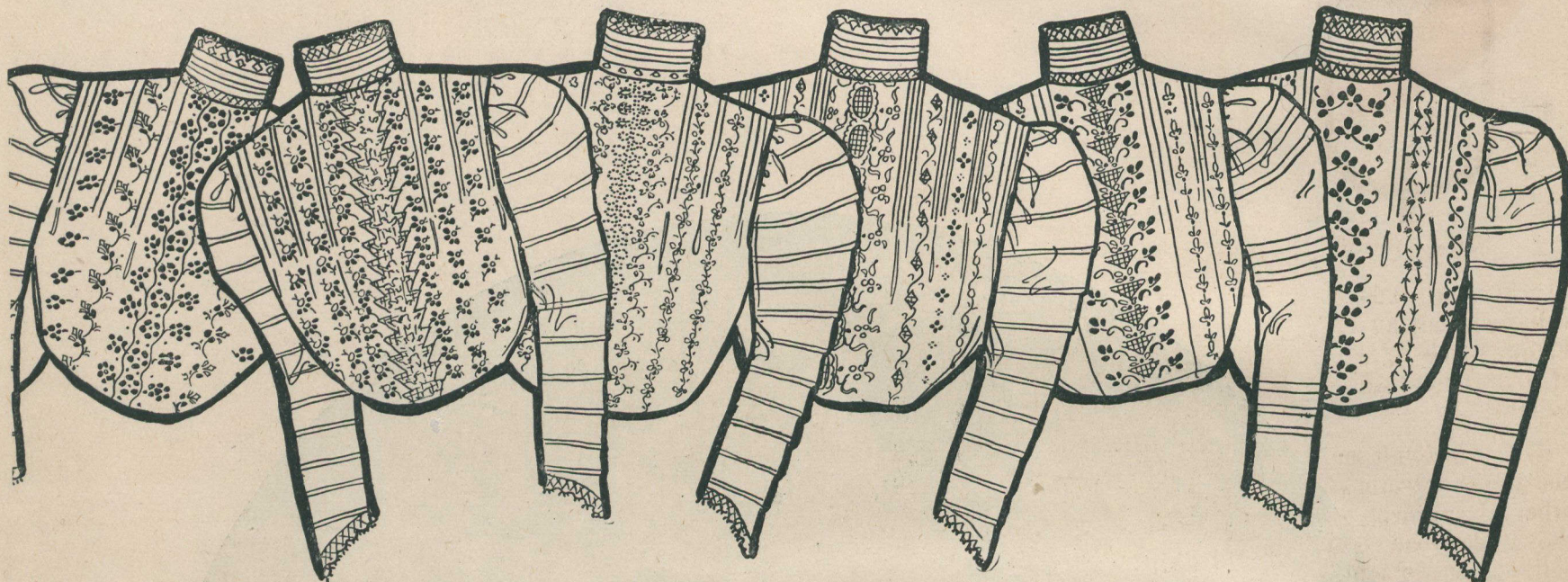


\$1

REMARKABLE SALE of FINE EMBROIDERED WHITE WAISTS AT

\$1

Each and Every Waist the Very Acme of Style and Prettiness



G-50

G-60

G-70

G-80

G-90

G-100

The Fronts are Beautifully Embroidered in a variety of Fine Stitchings, "Blind," "Eyelet" and "Rose" and "Guipure" Designs. Fine Tuckings on Back, Front, Sleeves and Collar, and finished with Frills of Fine Valenciennes Lace. Order by number—or better still—cut out and enclose illustration. Sizes 32 to 42.

Just think of it!—right at the beginning of the season comes this remarkable selling of Waists—just at the very time when they are most needed—but that is a characteristic of this store, for we take as keen a delight in being able to give you a bargain like this as you are to receive it; and only large quantity buying makes this low price possible. The above illustrations are exact reproductions of the Waists, and depict a few of the many styles we are offering. You can make your selection at random, and no matter which one your choice falls on, you will be more than pleased with it. Take our advice and lay in your summer supply now, for it will be many a day before we can duplicate this offer—style and quality considered. Order by number and be sure and give size.

THE ROBERT

SIMPSON

COMPANY LIMITED

TORONTO

\$1
\$1
\$1
\$1
\$1
\$1

\$1
\$1
\$1
\$1
\$1
\$1

Sizes 32 to 42

\$1

Sizes 32 to 42

\$1