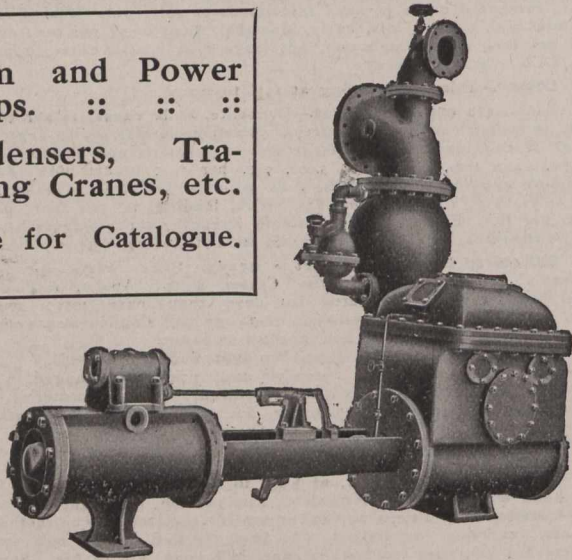


Steam and Power  
Pumps. :: ::

Condensers, Tra-  
velling Cranes, etc.

Write for Catalogue.



The Smart-Turner Machine Co., Ltd.  
HAMILTON - - CANADA

Potatoes.—Per 90 lbs., good quality, 65 to 75c.  
Rice and Tapioca.—Rice, grade B, in 100-lb. bags, \$2.75 to \$2.80; C.C., \$2.65. Tapioca, medium pearl, 5½ to 6c.  
Rolled Oats.—Oatmeal, \$2.20 per bag; rolled oats, \$2, bags.  
Sugar.—Granulated, bags, \$5.05; yellow, \$4.65 to \$5. Barrels 5c. above bag prices.  
Tea.—Japans, 20 to 38c.; Ceylons, 20 to 40c.; Ceylon greens, 19 to 25c.; China, green, 20 to 50c.; low-grades, down to 15c.  
Fish.—Salted.—Medium cod \$7 per bbl.; herring, \$5.25 per bbl.; salmon, \$7 per half barrel. Smoked fish.—Bloaters, \$1.10 per large box; haddies, 8c. per lb.; kippered herring, per box, \$1.20; new smoked herring, 13c. per box.  
Provisions.—Salt Pork.—\$24 to \$31 per bbl.; beef, \$18 per bbl.; smoked hams, 17 to 21c. per lb.; lard, 15½ to 17c. for pure, and 12½ to 14c. per lb. for compound.

\* \* \* \*

Toronto, August 25th, 1910.

The building trade is very active, and the demand for building material is still brisk. Stone, lime, and sand are moving easier, but the demand is still a little greater than the supply.  
Camp supplies are, and will increase, in price.  
The following are wholesale prices for Toronto, where not otherwise explained, although for broken quantities higher prices are quoted:  
Antimony.—Trade is quiet, price unchanged at \$8.50.  
Axes.—Standard makes, double bitted, \$8 to \$10; single bitted, per dozen, \$7 to \$9.  
Bar Iron.—\$2.05 to \$2.15, base, per 100 lbs., from stock to wholesale dealer. Free movement  
Bar Mild Steel.—Per 100 lbs., \$2.15 to \$2.25. Sleigh shoe and other take same relative advance.  
Boiler Plates.—¼-inch and heavier, \$2.20. Boiler heads 25c. per 100 pounds advance on plate. Tank plate ¾-16-inch, \$2.40 per 100 pounds.  
Boiler Tubes.—Orders continue active. Lap-welded, steel, 1¼-inch, 10c.; 1½-inch, 9c. per 1000; 2-inch, \$8.40; 2¼-inch, \$10; 2½-inch, \$10.60; 3-inch, \$12.10; 3½-inch, \$15.30; 4-inch, \$19.45.  
Building Paper.—Plain, 7c. per roll; tarred, 35c. per roll. Demand is moderate.  
Bricks.—In active movement, with very firm tone. Price at some yards \$9.50, at others, \$10.00 to \$11.00 for common. Don Valley pressed brick are in request. Red and buff pressed are worth \$18 delivered and \$17 at works per 1,000.  
Broken Stone.—Lime stone, good hard, for roadways or concrete, f.o.b. Schaw station, C.P.R., 70c., until further notice, per ton of 2,000 lbs., 1-inch, 2-inch, or larger, price all the same. Rubble stone, 55c. per ton, Schaw station, and a good deal moving. Broken granite is selling at \$2 per ton for good Oshawa.  
Cement.—The G.T.R. strike being broken, shipments are resumed. Car lots, \$1.75 per barrel, without bags. In 1,000 barrel lots \$1.60. In smaller parcels \$1.00 is asked by city dealers. Bags, 40c. extra. Demand constant.  
Coal.—Anthracite, egg, and chestnut sizes, \$6.75 per ton, net, and pea coal to \$5.75 per ton. In the United States there is an open market for bituminous coal and a great number of qualities exist. We quote: Youghiogheny lump coal on cars here, \$2.75 to \$2.80; mine run, \$3.65 to \$2.70; slack, \$2.75 to \$2.85; lump coal from other districts, \$2.55 to \$2.70; mine run 10c. less; slack, \$2.60 to \$2.70; canal coal plentiful at \$7.50 per ton; cook, Solvey foundry, which is largely used here, quotes at from \$4.75 to \$6.00; Reynoldsville, \$4.00 to \$5.10; Connellsville, 72-hour coke, \$5.25.  
Copper Ingot.—A very large volume of business is being done, but the market is weaker at \$15.25 to \$14.50. Production goes on at a rapid rate.  
Detonator Caps.—7c. to \$1 per 100; case lots, 7c. per 100; broken quantities, \$1.  
Dynamite, per pound, 21 to 25c., as to quantity.

# “ORB” and “REDCLIFFE” Corrugated Iron

Well Galvanized, soft, uniform in weight

John Lysaght, Limited  
Makers, Bristol

A. C. Leslie & Co., Ltd.  
Montreal

Felt Roofing.—A very good volume of trade is going on at \$1.80 per 100 lbs. as before.  
Fire Bricks.—English and Scotch, \$30 to \$35; American, \$25 to \$35 per 1,000. Fire clay, \$8 to \$12 per ton.  
Fuses.—Electric Blasting.—Double strength 4 feet, \$4.50; 6 feet, \$5; 8 feet, \$5.50; 10 feet, \$6. Single strength, 4 feet, \$3.50; 6 feet, \$4; 8 feet, \$4.50; 10 feet, \$5, per 100 count. Bennett's double tape fuse, \$6 per 1,000 feet.  
Iron Chain.—¼-inch, \$5.75; 5-16-inch, \$5.15; ¾-inch, \$4.15; 7-16-inch, \$3.95; ½-inch, \$3.75; 9-16-inch, \$3.70; ¾-inch, \$3.55; ¼-inch, \$3.45; ¾-inch, \$3.40; 1-inch, \$3.40, per 100 lbs.  
Iron Pipe.—A steady request at former prices:—Black, ¾-inch, \$2.03; ¾-inch, \$2.25; ½-inch, \$2.63; ¾-inch, \$3.28; 1-inch, \$4.70; 1½-inch, \$6.41; 1¾-inch, \$7.70; 2-inch, \$10.26; 2½-inch, \$10.39; 3-inch, \$21.52; 3½-inch, 27.08; 4-inch, \$30.78; 4½-inch, \$35.75; 5-inch, \$39.85; 6-inch, \$51.70. Galvanized, ¼-inch, \$2.86; ¾-inch, \$3.08; ½-inch, \$3.48; ¾-inch, \$4.43; 1-inch, \$6.35; 1½-inch, \$8.66; 1¾-inch, \$10.40; 2-inch, \$13.86, per 100 feet.  
Pig Iron.—We quote Clarence at \$20.50, for No. 3; Cleveland, \$20.50; Summerlee, \$22; Hamilton quotes a little irregular, between \$19 and \$20. The market unchanged and quiet.

Lead.—A very fair demand exists, at an unchanged price of \$3.75 to \$3.85. A better feeling exists, however.  
Lime.—Retail price in city 35c. per 100 lbs. f.o.b. car; in large lots at kilns outside city 22c. per 100 lbs. f.o.b. car without freight. Demand is moderate, supply insufficient, railways blamed.  
Lumber.—A brisk demand continues for all descriptions, and prices are fully maintained. Pine is good value at \$32 to \$40 per M. for dressing, according to width required; common stock boards, \$28 to \$33; cull stocks, \$20; cull sidings, \$17.50. Southern pine dimension timber from \$30 to \$45, according to size and grade; finished Southern pine, according to thickness and width, \$30 to \$40; hemlock is in demand and held quite firmly, we quote \$17.50 to \$18; spruce flooring in car lots, \$22 to \$24; shingles, British Columbia, are steady, we quote \$3.10; lath, No. 1, \$4.60; white pine, 48-inch, No. 2, \$3.75; for 32-inch, \$1.85 is asked.  
Nails.—Wire, \$2.35 base cut, \$2.60; spikes, \$2.85 per keg of 100 lbs.  
Pitch and Tar.—Pitch, unchanged at 70c. per 100 lbs. Coal tar, \$3.50 per barrel. Demand moderate.  
Plaster of Paris.—Calced, New Brunswick, hammer brand, car lots, \$1.95; retail, \$2.15 per barrel of 300 lbs.  
Putty.—In bladders, strictly pure, per 100 lbs., \$2.25; in barrel lots, \$2.10. Plasterer's, \$2.15 per barrel of three bushels.  
Ready Roofing.—An active demand; prices are as per catalogue.  
Roofing Slate.—Most of the slate used in Canada comes now from Pennsylvania or Maine, the Canadian supply being slender and mostly from the Rockland quarries of the Eastern Townships in Quebec. There is a great variety of sizes and qualities, so that it is difficult to indicate prices. But No. 1 Bangor slate 10 x 16 may be quoted at \$7 per square of 100 square feet, f.o.b. cars, Toronto; seconds, 50c. less. Mottled, \$7.25; green, \$7, with a prospect of advance. Dealers are fairly busy.  
Rope.—Sisal, 9½c. per lb.; pure Manila, 10½c. per lb., Base.  
Sand.—Sharp, for cement or brick work, \$1.05 per ton f.o.b., cars, Toronto siding.  
Sewer Pipe.—

	4-in.	6-in.	9-in.	10-in.	12-in.	24-in.
Straight pipe per foot	\$.20	\$0.30	\$0.65	\$0.75	\$1.00	\$3.25
Single junction, 1 or 2 ft. long	.90	1.35	2.70	3.40	4.50	14.65
Double junctions	1.50	2.50	5.00	....	8.50	....

## Provincial Steel Co. LIMITED.

COBOURG, - - - ONTARIO

DEPARTMENT A.

### MANUFACTURERS OF RE-ROLLED RAILS

Ranging in size from 20 to 70# per yard inclusive.