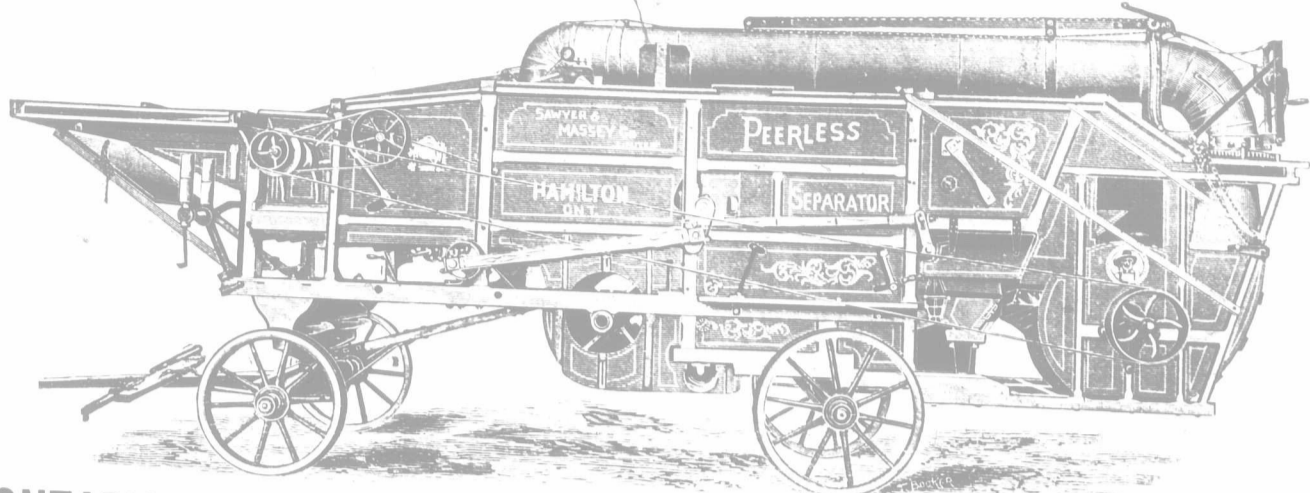


We Manufacture FOUR Styles of

Separators

To fill all the conditions of the different provinces of Canada, viz.:

- THE "PEERLESS,"
- THE "DAISY,"
- THE "ECLIPSE,"
- THE "NEW ONTARIO."



Our stock of attachments for Separators was never so full, fresh and up-to-date: WIND-STACKERS, STRAW CARRIERS, WEIGHERS, FEEDERS, BAGGERS, ELEVATORS, etc., etc.



ENGINES

Portable and Traction, Plain and Compound. Ranging from 13 to 25 Horse-power. Wood, Coal and Straw Burners.

WE ALSO MANUFACTURE

MONITOR CLOVER HULLERS

- 2 TO 12 HORSE SWEEP POWERS,
- 2 AND 3 HORSE LEVEL TREAD POWERS, BEVEL JACKS, LIFTING JACKS, ETC., ETC.

AS WELL AS

Saw-Milling and Road-Making Machinery.

Repairs for everything ever built. Write us re any of the above.

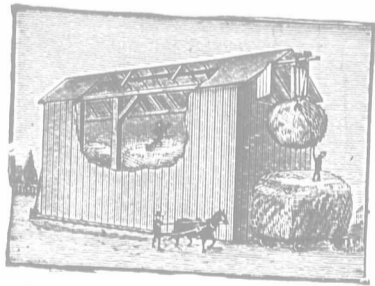
SAWYER & MASSEY CO'Y, LTD.,

Established 1836.

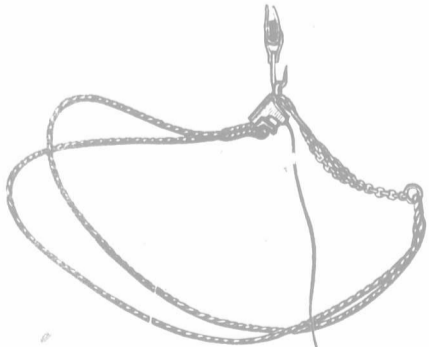
HAMILTON, CANADA.

BUCHANAN'S (Malleable Improved) PITCHING MACHINE

For unloading hay and all kinds of loose grain.



Unloads on either side of barn floor without changing car. No climbing necessary. Malleable Iron Cars. Steel Forks. Knot Passing Pulleys. Will work on stacks as well as in barns. Satisfaction guaranteed.



The Common-Sense Sheaf-Lifter

Works in connection with Pitching Machine, and is the most complete apparatus ever offered to the public for pitching sheaves. Sheaves left in the rack just as they come from the load.

RESPONSIBLE AGENTS WANTED

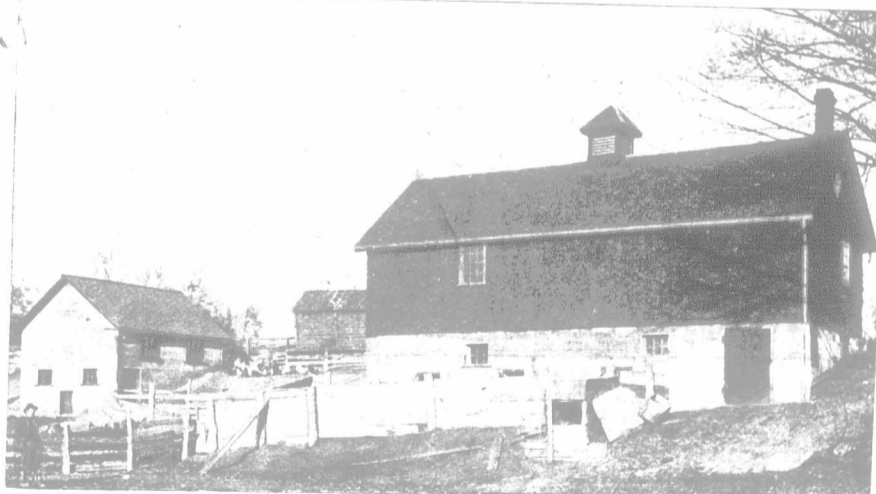
Circulars, Prices and Terms on application to

M. T. BUCHANAN & CO., Ingersoll, Can.

Concrete Piggery and Henhouse

OF MR. FRANK LOCKWOOD, DELAWARE, BUILT WITH

THOROLD CEMENT



THE HENHOUSE. Wall, from foundation to peak, built with THOROLD CEMENT.

THE PIGGERY. Basement walls built with THOROLD CEMENT.

READ WHAT MR. LOCKWOOD SAYS:

ESTATE OF JOHN BATTLE, DELAWARE, ONT., March 16, 1900.
 Manufacturers of Thorold Cement, Thorold, Ont.
 DEAR SIRS, - I used your Thorold Cement in my building. It gave the best of satisfaction, and I recommend it to all who intend building. Both buildings are piggeries. The largest one is 26x10, 8 ft. high, 12 in. wall next the bank, and 10 in. on other side and both ends. I do not know just how much material I used. Have forgotten. But I used 5 to 1 of Cement. Could not say just the time I was building it. Had five men, and six part of the time. The small building is 16x20, 11 ft. high at the eaves and extend to gables, wall 9 in. thick. The top story is a henhouse. Took five men about 5 days to build this one. There are cement doors in both and cement troughs also. The top story of the largest building is a granary for 20 tons and machinery on the other half. I did not keep count of how much gravel I used, as the buildings are built right on the side of the gravel hill. I supply the town-ship with Yours-respectfully,
 FRANK LOCKWOOD.

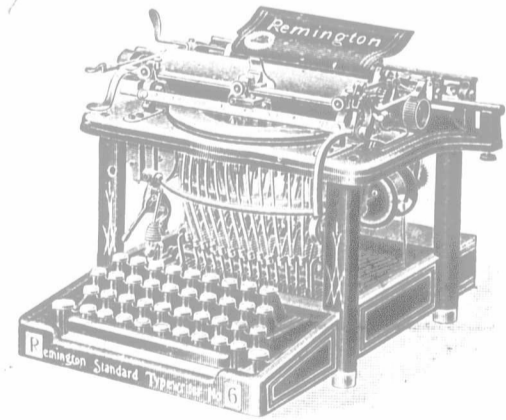
CENTRAL Business College

STRATFORD, ONT.

Our Motto: "High-grade Work Only."

Send for Catalogue.

W. J. ELLIOTT, Principal.



Remington Typewriter

- Simple? Yes
- Sure? Yes
- Swift? Yes
- Strong? Yes

Remington Typewriter Co.

6 RICHMOND STREET EAST, TORONTO.

BRANCHES: LONDON, HAMILTON, OTTAWA.

In answering any advertisement on this page, kindly mention the FARMER'S ADVOCATE.