

Men's Shirts of cheviots, rope and can-
 brics. Some have silk fronts with body
 in patterns and colors to match. Single
 or double striped in navy, blue, black,
 and pink; stiff or soft cuffs, neat style,
 and several sleeve lengths. Sizes 14 to
 17½. Each 1.25
 —Main Floor

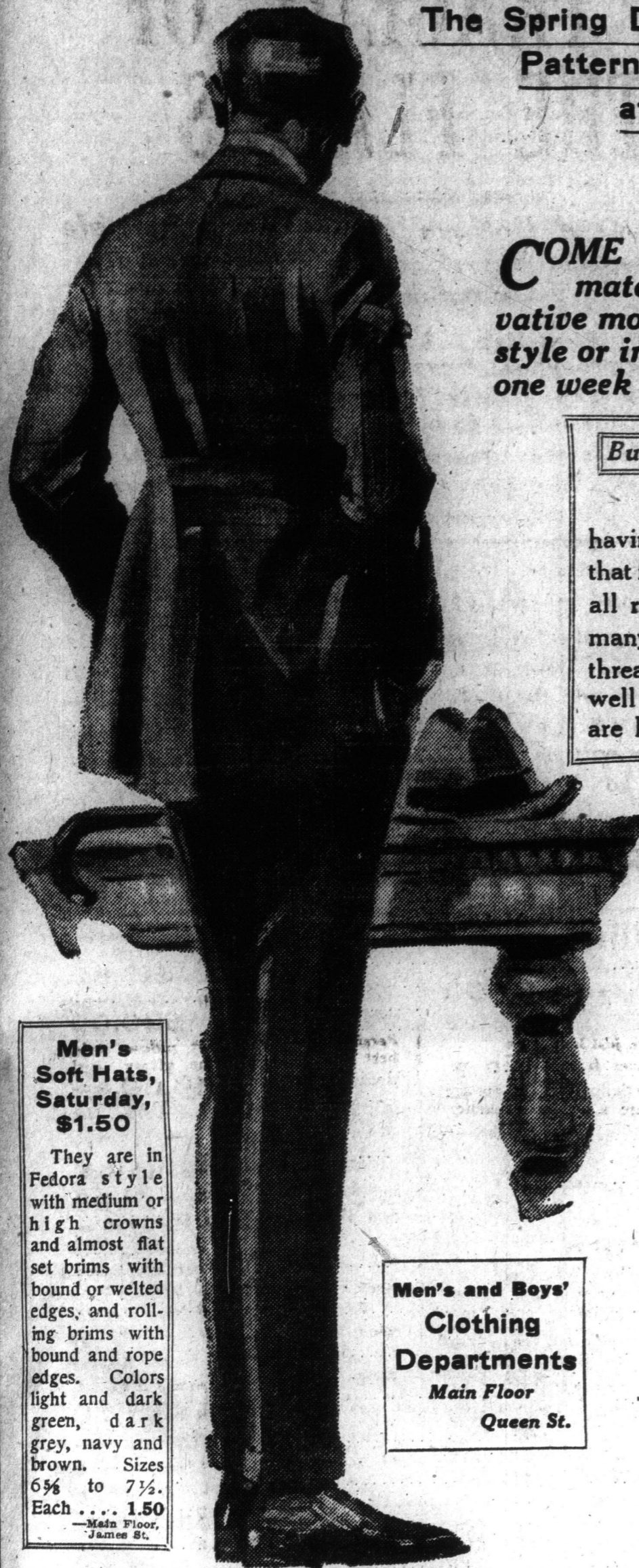
EATON'S DAILY STORE NEWS

New effects in Men's Silk Neck-
 ties; wide variety of broadened figure
 and floral patterns, and many
 diagonal stripes. All are large, and
 have wide ends. Each 50
 —Main Floor, Centre.

Men's Suits, Spring Coats and Raincoats at \$12.50, Will Be Specially Featured Saturday in Men's Department

The Spring Displays of Men's Clothing Show an Extensive Variety in Styles, Materials and Patterns at Prices From \$10.00 to \$35.00, Including the Fashion Park Clothes at \$25.00 to \$35.00, But the Ranges of Suits, Coats and Raincoats at \$12.50 Are so Good That We Make a Particular Feature of These Saturday

COME and see the splendid values obtainable at this figure, all in authentic styles, reliable materials, new patterns, and well tailored throughout. Suits in pinch-back to most conservative models, coats in pinch-back, slip-on and Chesterfield styles, raincoats in tweeds in slip-on style or in paramatta in regulation button-to-neck style. All at one price, \$12.50. Easter is but one week away—Choose now while assortments of sizes, patterns and styles are complete.



Men's Soft Hats, Saturday, \$1.50
 They are in Fedora style with medium or high crowns and almost flat set brims with bound or welted edges, and rolling brims with bound and rope edges. Colors light and dark green, dark grey, navy and brown. Sizes 6¾ to 7½. Each 1.50
 —Main Floor, James St.

Men's and Boys' Clothing Departments
 Main Floor
 Queen St.

Business Suits at \$12.50

These suits are smart three button styles, the coats having notched lapels, well formed shoulders and collars that fit well at the neck. They are made up in materials for all round service such as tweeds in various weaves in many shades of grey and brown, in mixtures, checks and thread stripes, also in navy-blue and black worsteds. All well tailored suits, many from our own workrooms. They are lined with twill serge. Sizes 36 to 44. Price 12.50

Young Men's Suits at \$12.50

Included in this selection are form-fitting models and the favored pinch-backs, some with back gathered in tiny welt seams to sewn belt across at waist; others with fulness gathered at each side and confined by pointed tabs, the centre being plain. Some have patch pockets, others slant or straight pockets with flaps. These suits are shown in spring weight tweeds mostly in brown and grey effects in stripes, fancy weaves and mixtures. Vests close with five buttons and trousers are straight and narrow with cuffs. Note the sizes, 33 to 38. Price 12.50

Raincoats at \$12.50

At this price in sizes 33 to 36 are coats in tweeds in heather mixtures, or grey stripes or mixtures that not only serve as raincoats but as spring coats. They are made in easy fitting slip-on styles with convertible lapels. Also are included coats in English paramatta cloths in olive shade and covert finish materials in fawn shade with faint stripe. These button close to neck, have military collar, and all seams are sewn and cemented. Sizes in latter, 36 to 46. Price . 12.50

The Spring Topcoats at \$12.50

This selection includes pinch-back and slip-on styles in homespun effects and chip-o-Norton tweeds. Slip-ons have full backs, some with seams and vent, others full box back without vent and with patch pockets with flaps, self collars and cuffs on sleeves. Also included are the ever stylish Chesterfield coats with fly front and in a length just falling below knees. These are shown in dark and medium grey or black cheviots. Sizes in young men's coats, 33 to 40. Sizes in men's coats 36 to 44. Price 12.50

Saturday Will Be a Good Day on Which to Choose the Boys' Easter Clothes.

When Boys' Spring Suits, Coats and Raincoats Will be Specially Displayed

This Season, as Perhaps Never Before, Has so Much Attention Been Centred on the Designing of Boys' Clothes. And Probably Never so Complete Have the EATON Assortments Been as Right Now—Eastertime, When it is Almost Natural for Everyone to "Dress Up." On Saturday Will Be Displayed and Arranged All That is New and Seasonable in the Way of Boys' Outer Apparel, and Not Only Has Style Been Considered, But the Garments Have Been Selected Because of Their Good Wearing Qualities and, Best of All, Their Exceptionally Low Prices.

These Items Give a Good Idea of the Splendid Values That Abound Throughout

Very Smart Pinch-back Suits, with three-piece belt sewn across back, are of soft cheviot finished tweed, showing a faint dark check effect. They have form-fitting shoulders, patch pockets, fine lustre linings, perspiration pads and pencil pockets. Bloomers are finished with self-belt, tunnel belt loops, watch pocket and expanding knee bands. Sizes 29 to 34. Price, 11.00

Boys' Grey or Fawn Reefer Coats, in new spring big checks of pick-and-pick patterns. They are double-breasted style, with self collar and pinch-back effect, have belt sewn across at back. Lined throughout. Sizes 3 to 10 years* Price 4.50

Boys' Bloomer Pants, made from strong materials, in dark mixed stripe patterns, full-fashioned, well sewn and finished with belt loops and strap and buckle at knee. Lined throughout. Sizes 23 to 28, price, 11.15; sizes 29 to 34, price 1.35

Fashionable Norfolk Suits for boys 6 to 10 years are neat brown patterns, in medium or dark shades. Coat is single-breasted, has yoke, knife pleats front and back, sewn belt at waist and patch pockets. Bloomer pants. Sizes 24 to 28. Price 5.00

Boys' Blue Serge Suits of smooth worsted finish. Are single-breasted style, with yoke, knife pleats back

and front. Sewn belt at waist. Patch pockets. Strong body linings and bloomer pants. Sizes 29 to 34. Price 6.50

At \$10.50 are Cheviot-finished Navy Blue Cloth Suits, in three-button, single-breasted, Norfolk style, showing yoke, knife pleats and sewn belt. Patch pockets and lapels are smartly tailored. Fine body linings. Bloomers are neat, full-fitting style. Sizes 29 to 34. Price 10.50

Suits of extra good value, are pinch-back style, in grey pick-and-pick patterns. Have sewn belt at waist. Three patch pockets and peak-shaped lapels. Italian cloth body linings. Bloomers are full-fitting and finished with strap and buckles at knee. Sizes 29 to 34. Price 6.45

At \$7.50 are Navy Blue Cheviot Reefers, in double-breasted style, with velvet collar, box back and emblem on sleeve, have side vents and are lined throughout. Sizes 3 to 10 years. Price 7.50

Boys' Swagger Slip-ons, in rough-finished mottled tweed effects, of grey or fawn. They are single-breasted, have wide roll lapels and split sleeves, have fancy cuffs. Patch pockets. Sizes 25 to 28, prices, \$6.00 and \$7.00; sizes 29 to 33, prices, \$7.50 to \$8.50; sizes 34 to 35, prices, \$8.50 and 10.00

—Main Floor, Queen St.



These Three Big Bargains For Boys

125 Boys' Pinch Back Suits at \$5.85—200 Fine Tweed Suits at \$8.65, and Tweed Raincoats at \$4.85. Come Saturday and Share in the Savings.

The Suits at \$5.85

are of smooth-finished grey tweeds, in neat pick-and-pick pattern. The coats are cut in a smart form-fitting pinch-back style, with patch pockets at front and 3-piece belt sewn at back only. The bloomer pants are full-fashioned and finished with belt loops, watch pockets and expanding knee bands. The suits are lined throughout. Sizes 30 to 35. Extra special value, Saturday, suit, 5.85

A collection of 200 very fine Tweed Suits to be cleared Saturday at \$8.65. The lot comprises suits made from cloth ends of men's suitings and being but two or three suits of a pattern, there is a great variety to choose from. There are medium or dark greys and dark browns, in many checks, pin checks, fine stripes and fancy mixtures. The materials are worsteds or cashmere finished tweeds, and the suits are particularly well tailored throughout. They are pinch-back models, are well proportioned and have medium wide lapels. Full-fitting bloomers and good body linings. Sizes 29 to 34. Special Saturday, suit 8.65

The Tweed Raincoats are in mixed fawn or grey patterns. They are single-breasted models, button up to neck, have close-fitting collar, full box back, raglan sleeves, sewn and cemented seams, slash pockets and wind straps on sleeves. Sizes 6 to 16 years. Very special Saturday, each 4.85

THE T. EATON CO LIMITED