

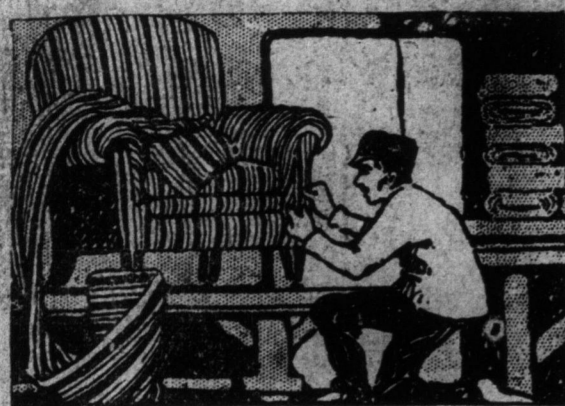
Snapshot enlargements, size
6 1/2 x 8 1/2, 30c; framed, 65c.
—Camera Dept. Main Floor.

EATON'S DAILY STORE NEWS

Store Opens at 8:30 a.m.
And Closes at 5 p.m.

Suggestions for the Improvement of the Home

Have You a Shabby Chair, Chesterfeld Sofa, Window Seat, etc., to Re-cover?



Just Now the Selection of Fabrics for Upholstering and Slip Covers is Unusually Large and our staff of skilled Upholsters can give prompt attention.

THE DRAPERY DEPARTMENT makes a special feature of this special order work — the

upholstering of chairs, Chesterfields, divans, bedroom boxes, ottomans, window seats, couches, etc.; also the making of loose slip covers.

The large display of suitable fabrics, tapestries, plain kells cloth, velours in light and dark shades, and chintzes in a large assortment of patterns in the department on the Fourth Floor, provides a selection that is almost sure to satisfy your individual tastes.

At your request a man will be sent to your home — situated within city or any suburban district where delivery wagons go — to measure your furniture and supply an estimate of cost for any type of work that may be required, for which service no charge is made. Write, telephone or call at the Department.

—Fourth Floor, Yonge St.

Large Serviceable Bath Towels at Very Moderate Prices

HOW INVIGORATING it is after a bath to rub the body vigorously with a big, soft, thick, spongy towel, and how satisfactory it is to know that you use a towel that absorbs all the wet and dampness from your body, leaving you perfectly dry and refreshed.

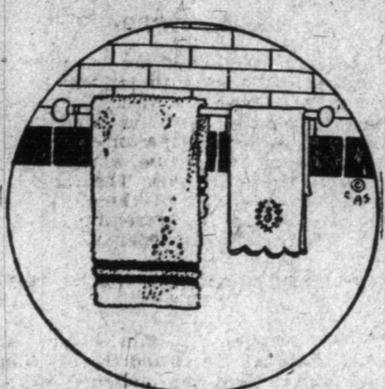
Just such Bath Towels are available in the staple department, second floor, at extremely moderate prices, special emphasis being given to one size, 26 x 54. It's an extra heavy, natural-colored towel, with fancy red stripes down centre and at sides, and has fringed ends. An English make that will stand many a wash without losing its softness or pile. Splendid value at pair, .85

A plain white heavy Bath Towel, with plain borders and hemmed ends, is size 24 x 48, and is thick and delightfully soft and spongy. Price, per pair90

An English-made White Bath Towel, firmly woven of thick, strong cotton; has plain borders and fringed ends; size 23 x 47 inches. Pair, 70c.

A Striped Bath Towel that will give great service. Is English made, in natural color, and has fringed ends. Size 22 x 46 inches. Pair, 43c.

Big, Snowy White Bath Towel, with neatly embroidered



ered fast blue initials at the end. Have hemmed ends, and are of a thick, heavy weight. Size 22 x 44 inches. Pair, 80c.

For a low-priced, everyday Bath Towel that will stand long service, we recommend an English Fringed White Bath Towel, good weight. Size 21 x 36 inches. Pair, 33c.

—Second Floor, James Street.

The Globe Steel Safe, as Illustrated, for Office or Home

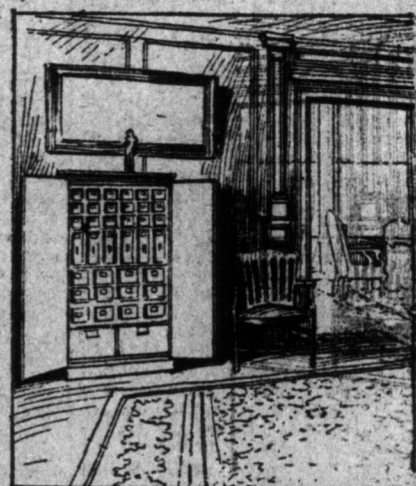
Not Only Provides Safety for Important Papers and Other Valuables, But Provides the Satisfaction of Knowing That They Are All Right.

THE GREAT CONVENIENCE of a Globe Steel Safe to the busy man who hurriedly places important documents and records in it for protection against fire and prying eye when leaving the office, entirely over shadows its comparatively small cost.

The satisfaction to the members of the household when not at home that the heirlooms and valuable recepts are secure till one's return, makes the ownership of a Globe Safe desirable.

The Globe Steel Safe is built of double walls of cold-rolled steel, asbestos, insulated both on the outside and inside and with air-tight chambers, making combustion impossible. The case is not soldered or riveted together, but forced together under tremendous pressure. Fitted with Yale key or combination dial lock and made in various sizes. Owing to its light weight, this safe can be rolled on its castors, even the largest size, on any ordinary house floor without damaging carpets or floors.

As illustrated, size 66 inches high, 36 inches wide, 25 inches deep. case only \$9.00
Household Safe, size 48 inches high, 36 inches wide, 25 inches deep. case only \$6.00
Shelves fitting automatically for either safe, each 23c
Partitions fitting automatically, of various heights, from 45c up



—Furniture Building.

Varnished Tile Paper, 25c Roll

FOR attractiveness and cleanliness in the kitchen, pantry, bathroom, back hall or store, this varnished paper is most satisfactory.

It can be washed without injury; is impervious to kitchen odors and bathroom steam, etc., and is very easily put on.

Made by English and American manufacturers, are thickly varnished, glossy finished tile papers in square block patterns, with art and figured designs of blue, green, tan, buff or grey. Single roll, 25 Canadian and American Tapestry

Papers, 40c to 65c.

Superb designs of foliage, flowers, verdure or scenic effects, in green, brown, grey, tan, buff and fawn; appropriate for dining-rooms, living-rooms, libraries, halls or smoking-rooms. Single roll, 40c, 50c and 65c.

—Fourth Floor.

We Will Paper Any Room Up to 12x14x9 Feet, Supplying Paper, for \$5.00

All with ceiling, and most with border to match. Choose the patterns you prefer, and we will send a competent man to hang the paper. Any room up to 12 x 14 x 9 feet, each order, with paper 5.00

Medium Priced Rugs for Almost Any Room in the Home

An Immense Variety of New and Attractive Designs, Offering Some Excellent Values in Such Desirable Rugs as Wiltons, Axminsters, Brussels and Scotch Wools

A BEAUTIFULLY patterned, new rug for the parlor, dining-room or den. What a transformation it would make—how fresh and different the room would be — and what better time to make the change than now, after fall housecleaning and before the season of home entertaining and Christmas.

The Floor Covering Department is stocked high with a greater selection of newly-made Rugs that are really distinctive and odd in patterns and color, and that are above all, most surprisingly low in price.

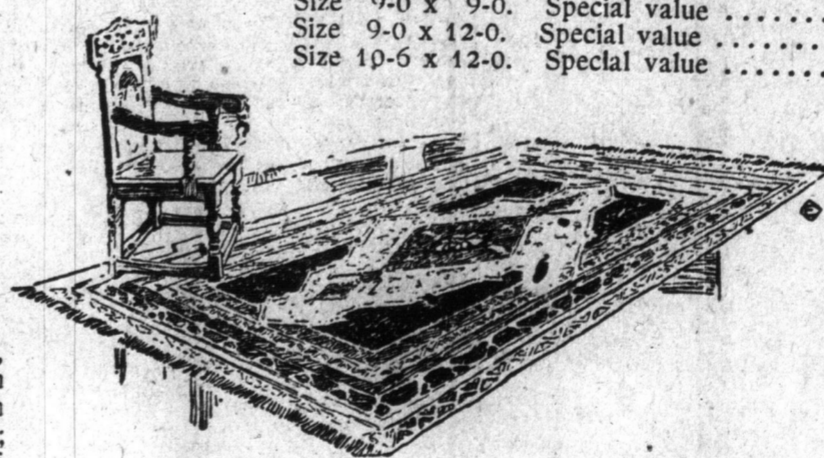
Beautiful English Axminster Rugs, woven seamless and in sizes for almost any room; from 6 ft. x 6 ft. to the larger 10-6 x 13-6. The range of designs varies from the plain centre, with band borders, in shades of brown, blue or green, to the richly colored Oriental reproductions in ivory, rose, green, cream or blue, or the rich deep tones of dark blue, terre, olive, black and red.

6 ft. x 6 ft. Price \$17.00
6 ft. x 9 ft. Price 25.50
9 ft. x 10 ft. Price 38.50
9 ft. x 12 ft. Price 51.00
10-6 x 13-6. Price 67.50

Wilton Squares, in Oriental and conventional designs, from the small Persian pale effects to the bolder Kazak colorings. Included are rich browns, green, old blue, rose and amber tones. From 4-6 x 6-0 to 11-3 x 15-0. Sizes come large and small—as follows:

4-6 x 6-0. Price \$12.50
6-9 x 9-0. Price 29.00
9 x 10-6. Price 45.00
9 x 12-0. Price 55.00

Brussels Squares, for dining-room, sitting-room, bedroom, etc. The designs are conventional and Oriental, including green ground with leaf design, and small detached figures in cream, rose, green and black; the same designs also on rose ground; tan ground Ferehan, with green, rose and steel blue; Persian panel effect, in tan, green, brown, cream and dark blue; colors that retain their rich effects through many years of



Oilcloth Remnants Reduced to 27c Square Yard.

Lengths from 2 to 8 yards, widths from 1 to 2 yards; consisting of odds and ends left over from the past few days' selling in our popular priced oilcloths. Tiles for bathroom, black patterns and handsome effects for halls or kitchens, and floral designs for bedrooms or bedrooms. Nearly every piece is in perfect condition, and may be relied on for good service. Special reduced price, square yard 27c

—Fourth Floor.

Here and There in the Store

Hundreds of people are enjoying a skate almost every night on the artificial ice at the Arena. Get your skates now and try it.

We're ready with skates of all kinds, as well as boots. See the display in Sporting Goods Department, Fifth Floor.

EATON'S Overseas Chocolate — a highly concentrated Chocolate, prepared specially for sending to soldiers. It is not only a delicious confection, but a sustaining food; will keep indefinitely. Dose up in half-pound cakes and wrapped in tin foil. Per cake 25c
—Basement, Main and Fifth Floors.

Make the Restroom on the Third Floor your rendezvous.

Low-priced goods from almost every department in the store are represented in the Basement section. Pay it a visit often.

The Book Department will take subscriptions for Canadian, English and American papers and magazines.

Women who work in munition factories will be interested in the new munition workers' gloves we are showing. They are made of buckskin, in loose, easy-fitting style, and are soft and comfortable on the hands. Have hand twist with cord and button fastener. Price, per pair 85c

The Escalators at Yonge Street entrance will carry you to Second and Third Floors.

Monday's Breakfast 25c

Served in Grill Room from 8.30 to 11 a.m. An unusually good Menu for Monday, consisting of—

Oatmeal or Corn-flakes with Cream.

Broiled Small Steak
Fried Potatoes
Toast or Tea Biscuits
Pot of Tea or Coffee 25c.

—Fifth Floor.

Monday's Grill Room Dinner

Roast Prime Ribs of Beef, Pan Gravy, or Roast Haunch of Venison with Cranberry Sauce. Mashed or Boiled Potatoes and Creamed Carrots.

Peach Shortcake and Whipped Cream. Club Rolls and Butter. Pot of Tea or Coffee 50c

Acme Open Grate, \$7.50

They throw lots of heat and in addition give you the glow from the burning coal. Just like a fireplace. Can be used with ordinary smoke pipe in any room. The body is steel, front and top cast-iron, dumping grate, brick linings, removable top, with urn. Price 7.50

Coal Hods, black Japan, 25c, 35c, 45c. Galvanized, each, 60c, 65c.

—Basement.

41-Piece Japanese China Tea Set at \$4.25

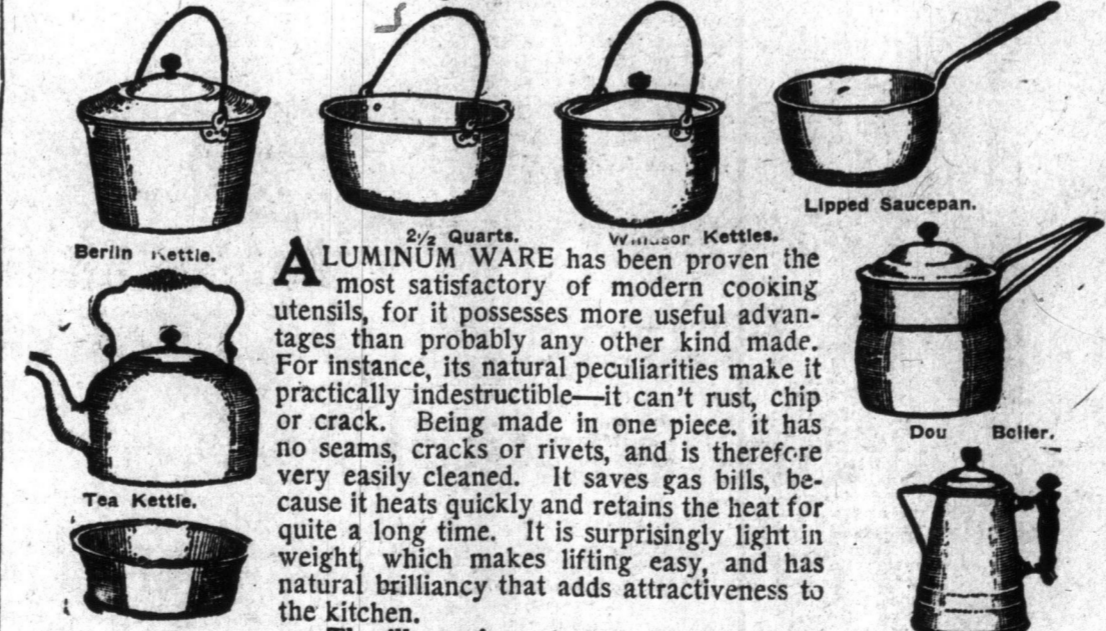
This set is decorated in a pretty pink and yellow rose effect; has clear glaze, and gold traced handles; the set consists of 12 tea plates, 12 cups and saucers, 2 cake plates, 1 cream jug and a covered sugar bowl. Complete set of 41 pieces. Price 4.25

Sugar and Cream Sets at 25c

Japanese China Sugar and Cream Sets, decorated in a pretty pink floral effect and a beaded band running around each piece, has gold traced edges and handles. Price, per set 25c

—Basement.

Aluminumware Lightens Kitchen Work, Cooks Food Correctly, and Practically Lasts a Lifetime



The illustrations show some of the useful shapes, and the following items tell of the extremely low prices on special display in the Basement next week.

Tea Kettles, \$3.25, \$3.35, \$3.75, \$3.95, \$4.25.
Double Boilers, for milk or rice, \$1.50, \$1.95, \$2.40, \$2.75.
Window Covered Kettles, for boiling, \$1.65, \$1.85.
Coffee Pots, \$1.75, \$2.10. Teapots, \$2.25, \$2.50.
Lipped Sauce Pans, 48c, 60c, 75c, 85c, \$1.10.
Preserving Kettles, \$1.55, \$1.65, \$2.00, \$2.40, \$2.70.
Pudding Pans, 50c, 60c, 80c, \$1.00, \$1.20.
Covered Kettles, \$1.20, \$1.35, \$1.85, \$2.35.

See demonstration in the Basement.

Majestic Electric Heater at \$5.00 and \$8.50

This Electric Heater is a very convenient article to have around the home. It can be used for the children's room, bathroom, sick room, or hall, or a corner of any room that is hard to heat by furnace. This Heater can be attached to any electric socket and throws a dry heat in a remarkably short time.

The \$5.00 one has a black cast base, with a nickel-plated pedestal, bowl and guard; the contents of this heater are guaranteed for one year. Complete, with attachment cord and plug. Price . . . 5.00

The \$8.50 Heater is a little larger in size than that at \$5.00, and has an all-cast base and pedestal in nickel finish, with a copper-plated bowl reflector, and fitted with a strong wire guard. Complete, with attachment cord and plug. Price . . . 8.50

Other Electrical Accessories for the Home

Semi-indirect Fixture, in Adams patterns, with brush brass hanger and a soft diffusing glass bowl, wired for 3 lights. Price 12.00

Hall Lanterns, in a hammered brass finish, fitted with art glass, in various shapes and designs. Price, \$6.50, \$7.50 and \$7.25 each.

Adjustable Desk Lamps, in brush brass finish and white enamel reflectors, for students, offices, etc. Price . . . 5.50

—Basement.

Have a Few C. D. V. Photos Taken to Send to Friends at the Front.

Pictures Size 2 1/2 x 3 1/4 on Small Postcards, 4 for 26c; 12 for 60c.

The C.D.V. gallery is in connection with the camera section on the main floor. Work is finished in three days. Samples may be seen at camera section.

4 C.D.V. Photos, 25c, 12 for \$2.00.

Enlargements, 5 x 7 inches, on heavy brown bevel-edged mount, size 9 x 12 inches, for 35c

Enlargement 5 x 7 inches, in frame 9 x 12 of 3/4 inch weathered oak moulding, with glass, for 70c

We also offer a very neat folder for the C.D.V. at, each 3c

—Main Floor, James Street.

T. EATON CO.