

BRONZE HARDWARE

We will be glad to give you Estimates on any Specification you may submit—We can make you Exceptionally Low Figures on Builders' Hardware

TILES & MANTELS

Plain and Decorative Wall Tiles—For Kitchens, Bathrooms, Lavatories, Etc.
 Enamelled and Hand Painted Tiles—For Hearths, Facings, Linings, Fire Places, Etc.
 Encaustic and Mosaic Tiles—For Churches, Halls, Vestibules, Conservatories, Etc.

Designs will be forwarded on receipt of plan of spaces to be covered with tile with estimated cost of same laid by experienced workmen in any part of the Dominion.

WROUGHT IRON AND BRASS FIRE PLACE GOODS

RICE LEWIS & SON, LIMITED, TORONTO



CABOT'S CREOSOTE SHINGLE STAINS

The Original and Standard Shingle Stains are made only by **SAMUEL CABOT**, of Boston, Mass. Every package bears his trade mark, and every gallon is guaranteed. Used and proved in every climate for nearly twenty years. Also

CABOT'S

Sheathing and Deafening "Quilt"

the most perfect insulator of heat and deadener of sound on the market. Decay, moth and vermin-proof, and uninflamable.

Samples, Catalogue and full information upon application to the manufacturer or his

CANADIAN AGENTS:

- ANDREW MUIRHEAD, 82 Bay St., Toronto.
- SEYMOUR & CO., Montreal.
- C. G. HENSHAW, Vancouver.
- F. H. FRYDGES, Winnipeg.
- W. H. THORNE & CO., St. John.
- E. D. ADAMS, Halifax.

"BEAVER" PORTLAND CEMENT

Manufactured by the Beaver Portland Cement Company, Limited.

COMMERCIAL WOOD & CEMENT CO., Sole Sales Agent, MONTREAL.

The Owen Sound Portland Cement Company, Limited

WORKS AT
SHALLOW LAKE, ONT.

Over 39,000 barrels of our SAMSON BRAND PORTLAND CEMENT sold during 1895, and not a single complaint received as to its quality.

[The City of Toronto have contracted with us to supply our SAMSON BRAND PORTLAND CEMENT for the requirements of the whole city for 1897 and 1898.]

Can you wish any better recommendation?

Canada can produce as good Portland Cement as made in the world, and we are making it.

We guarantee the quality to be equal in every respect to the best imported brands from England and Germany.



SIDEWALK CEMENT A SPECIALTY

For testimonials, prices and further information, apply to the Manager, Shallow Lake, Ont., or to
 Correspondence Solicited

JOHN LUCAS
377 Spadina Ave., TORONTO

The Turnbull & Russell Co.

MANUFACTURERS OF

ELECTRIC, HYDRAULIC,
HAND and POWER

ELEVATORS

AND
DUMBWAITERS

TURNBULL ELEVATOR WORKS
126 John Street,

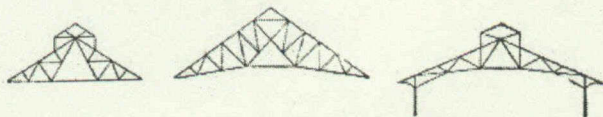
Toronto, Ont.

TELEPHONE 8238

THE HAMILTON BRIDGE WORKS CO., LIMITED

HAMILTON, CANADA

ARCHITECTURAL STEEL



We have on hand at all times a large stock of

BEAMS, ANGLES, CHANNELS, TEES, PLATES, Etc.

and are therefore in a position to quote close prices and can guarantee quick delivery. When you require anything in this line GIVE US A CHANCE TO QUOTE YOU FIGURES.