

CANADIAN ILLUSTRATED NEWS.—The cartoon in this week's number of the *Canadian Illustrated News* is a good one, illustrative of the present agitation about the more rigid carrying out of the Customs regulations of the United States and Canada. The picture shows Uncle Sam to have reached a lock in the Champlain Canal with a row of barges, and he asks Hon. Mr. Mackenzie for permission to pass over. The Premier stands by the gate, with his hands in his pockets, and mildly replies: "Can't pass this way, Uncle Sam; better go round by Halifax. The St. Lawrence is free. Since you are so particular about your canals, we'll read our treaties more closely and stand by them—to the letter. You can't pass, Uncle Sam!" To other respects the *News* is up to the usual standard. It supplies an excellent map of the seat of war in Turkey for which newspaper men will be thankful as it makes the telegrams more intelligible.—*Kingston Whig*.

OUR CHESS COLUMN.

Solutions to Problems sent in by Correspondents will be duly acknowledged.

All communications intended for this department to be addressed Chess Editor, Office of CANADIAN ILLUSTRATED NEWS, Montreal.

TO CORRESPONDENTS

There is little of consequence in the chess world at present. In England, we read of a contest between the Bournemouth Club and the City of London Club, in which eleven members of the latter gave the odds of Kt to their suburban antagonists, and beat them by six games to four, and one draw. In order to comprehend fully such a result, it must be borne in mind that the City of London Chess Club has for its members such players as Masonell, Whisker, Potter, Horwitz and Jan sen.

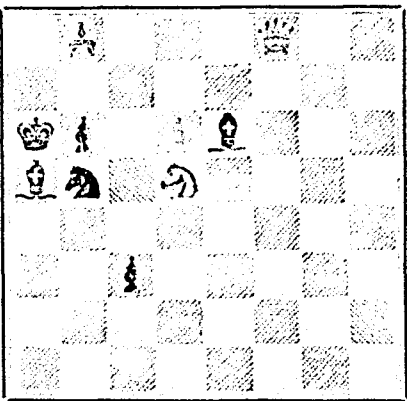
In America, chess players are anxiously waiting to see what modifications of their regulations the committee connected with the Centennial Tourney intend to make, as there seems to be some dissatisfaction with the programme recently published. The subscription list will soon be closed, and the whole amount collected will not, it is supposed, exceed two thousand dollars. This sum, when divided into several parts for prizes, will not, it is considered, be large enough to tempt any of the great European players to cross the Atlantic. Herz Zukertort, however, is almost as sure to be present at the contest at Philadelphia.

In a provincial contest in England we see that one of the prizes was gained by a lady, Miss Mary Budge, who has on several former occasions showed much skill in the game. May her example be followed by those of her own sex in this Canada of ours.

PROBLEM No. 81.

By WM. S. PAUL.

BLACK



WHITE

White to play and mate in three moves.

GAME 11710.

Played some time ago between Kneish and Rosen-thal.

King's Bishop's Gambit.

- | | |
|--------------------|----------------------|
| WHITE.—(Kneish.) | BLACK.—(Rosen-thal.) |
| 1. P to K 4 | P to K 4 |
| 2. P to K B 4 | P takes P |
| 3. B to Q B 4 | Kt to K 2 |
| 4. Q Kt to B 3 | P to Q B 4 |
| 5. Q to K 2 | P to K Kt 4 |
| 6. P to K R 4 | Kt to K 3 |
| 7. P to Q 4 | Kt takes P |
| 8. R takes Kt | P takes R |
| 9. Q takes P | B to K Kt 2 |
| 10. Q B to Q 6 | Q to K Kt 4 |
| 11. K Kt to B 4 | Q to R 3 |
| 12. P to K 5 | P to Q Kt 4 |
| 13. K B to Kt 3 | Q B to R 3 |
| 14. Q Kt to K 4 | P to Q Kt 5 |
| 15. Q to K B 2 | Q to K B 5 |
| 16. Q Kt to Q Kt 5 | P to K B 3 |
| 17. Kt to K B | R to K Kt sq |
| 18. P to K 6 | Q to K 5 (ch) |
| 19. K to Q 2 | Q to K Kt 3 |
| 20. B to K sq | K B to R 4 (ch) |
| 21. K to Q sq | Q B to K 7 (ch) |
| 22. R takes B | Q Kt to R 3 |

White mates in three moves.

GAME 11711.

Played a short time ago at the Montreal Chess Club, between Dr. Howe and Mr. Shaw, the former giving the odds of Q Kt.

Remove White's Q Kt from the board.

SCOTT'S GAMBIT.

- | | |
|---------------------|--------------------|
| WHITE.—(Dr. Howe.) | BLACK.—(Mr. Shaw.) |
| 1. P to K 4 | P to K 4 |
| 2. P to Q 4 | P takes P |
| 3. B to Q B 4 | B to Q B 4 |
| 4. Q to K 2 | P to Q 3 |
| 5. B to Q 2 | Q to K B 3 |
| 6. Castles | Kt to Q B 3 |
| 7. P to K R 3 | B to Q Kt 5 |
| 8. Kt to K B 3 | P to K R 3 |
| 9. B takes B | Kt takes B |
| 10. Kt takes P | B to K 3 |
| 11. Kt takes B | P takes Kt |
| 12. Q to K R 5 (ch) | K to Q 2 |
| 13. K to Q Kt sq | Q to K Kt 4 |
| 14. Q to K B 7 (ch) | Q to K 2 |
| 15. B takes P (ch) | K to Q sq |
| 16. Q to K B 5 | Q to K B 3 |
| 17. Q to Q Kt 5 | Q takes B |
| 18. Q takes Kt | Q B to Q Kt sq |
| 19. P to K B 4 | Kt to K B 3 |
| 20. P to K 5 | Kt to K sq |
| 21. K R to K sq | P to Q 4 |
| 22. P to K B 5 | Q takes P |
| 23. R takes P (ch) | K to Q B sq |
| 24. K R to Q sq | P to Q Kt 3 |
| 25. P to Kt Kt 4 | Q to K B sq |
| 26. B to Q 8 (ch) | P to Q Kt 2 |
| 27. Q to K 4 (ch) | K to Q B 3 |
| 28. K R to Q 7 (ch) | K to Q R 3 |
| 29. Q mates | |

SOLUTIONS.

Solution of Problem No. 81.

WHITE.

1. K to Q 5
2. B to Q Kt sq
3. B or Kt mates

BLACK.

1. R to K 3
2. K takes Kt, or anything

PROBLEMS FOR YOUNG PLAYERS NO. 81.

WHITE.

- K to Q 6
- Kt to Q 8
- Pawns at Q Kt 6, and K R 3

BLACK.

- K at Q R sq
- Pawns at Q Kt 2, and K R 4

White to play and mate in five moves.

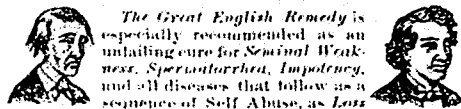
50

Bristol Visiting Cards, with your name finely printed, sent for 25c. 9 samples of CHROMO, Snowflake, Diamond, Glass, etc., with prices, sent for 5c. stamp. We have over 200 styles. Agents wanted. A. H. Fuller & Co., Brockton, Mass. 14-6-52-143

FOR CHILDREN CUTTING TEETH, LOSS OF SLEEP, DYSENTERY, RESTLESSNESS, CONVULSIONS, COLIC & C. CHILDREN'S CARMINATIVE CORDIAL. CORDIAL CARMINATIF CELEBRE. POUR LA DENTITION DES ENFANTS, DYSSENTERIE, CONVULSIONS, COLIQUE, PERTE DE SOMMEIL.

For sale by all Druggists and Grocers. DEVINS & BOLTON, Druggists, Montreal.

DR. WILLIAM GRAY'S SPECIFIC MEDICINE



The Great English Remedy is especially recommended as an unrivaled cure for Seminal Weakness, Spermatorrhoea, Impotency, and all diseases that follow as a consequence of Self Abuse, as Loss of Memory, Universal Lassitude, After-Pain in the Back, Dimness of Vision, Premature Old Age, and many other diseases that lead to Insanity or Consumption and a Premature Grave, all of which as a rule are first caused by deviating from the path of nature and over indulgence.

The Specific Medicine is the result of a life study and many years of experience in treating those special diseases. Pamphlet free by mail.

The Specific Medicine is sold by all Druggists at \$1 per package, or six packages for \$5, or will be sent by mail on receipt of the money, by addressing

WILLIAM GRAY & CO., Windsor, Ont.

Sold in Montreal by R. S. LATHAM, J. A. HARTE, JAS. HAWKES, PICAULT & CO., and all responsible Druggists everywhere. 14-2-52-136

ARCH. McINTYRE, CARPENTER and JOINER.

BANKS, OFFICES and STORES fitted up in the best and most economical style.

JOBING of all kinds promptly attended to.

1078 ST. CATHERINE STREET, CORNER DUNDAS. 13-1-52-294

DEVINS & BOLTON'S PURE QUININE WINE

HAS BEEN HONoured BY THE SPECIAL recommendation of the medical faculty. It is scientifically prepared with *Huacava's Sulphate of Quinine* and a pure Wine of very superior quality, possessing the medicinal properties of this famous Tonic in a simple, pleasant and reliable form.

Prepared by DEVINS & BOLTON, Druggists, Montreal.

For sale by all Druggists and Grocers.

THE OTTAWA RIVER NAVIGATION CO'Y.



ROYAL MAIL LINE OF STEAMERS

BETWEEN

MONTREAL AND OTTAWA.

DAY LINE.

St. Pierre, Str. Prince of Wales.

NIGHT LINE.

Str. Queen Victoria, Str. Princess.

Passengers leave Bonaventure Depot by 7 A. M. or 5 P. M. Trains for Lachine to connect with Steamers for Ottawa and intermediate ports, (except Saturday after-noon, when Passengers leave by 3 P. M. Train for CA-RELTON and intermediate ports only.)

Freight checked. Meals and Staterooms extra. Evening Steamer from Ottawa will run LACHINE RAPIDS.

EXCURSION TICKETS for CARLTON (good for one day only) at ONE FARE.

Passengers for the celebrated CALEDONIA SPRINGS will land at L'Original. Return Tickets at reduced rates.

TOURISTS will find this route one of the MOST PICTURESQUE in Canada.

Market Steamer "DAUMAR" leaves Montreal Wednesdays and Saturdays at 6 A. M.; Carillon Mondays and Thursdays at 6 A. M.

Freight for all points on the OTTAWA forwarded with despatch.

Freight Office 11 Bonaventure Street, or Grand Trunk Offices.

11-4-13; R. W. SHEPHERD, President.

SIGNOR J. HAZAZER'S ACADEMY DANCING AND DEPARTMENT NOW OPEN. 13-1-17

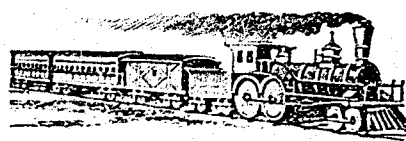


LAWLOR'S CELEBRATED SEWING MACHINES, 365 Notre Dame Street, 13-10-52-91 MONTREAL

\$225! PIANO-FORTES. \$225! New—fully warranted, 7 octave—all modern improvements—tone full, rich and pathetic—exquisite combination, producing a most beautiful orchestral effect. The most thorough test and examination desired. \$25 dollars each. Repairing done in all its branches at moderate prices and warranted.—LEICESTER, BUSSETTE & CO., Piano Manufacturers, 270 Mountain St. 13-4-52-67

50 VISITING CARDS, name finely printed, for 25 cents. 1000 Agents wanted. Samples 3c sup. A. W. KINNEY, Yarmouth, N. S. 13-26-13-131

CANADIAN STEAM USERS'



INSURANCE ASSOCIATION CAPITAL, \$500,000.

Issues Policies of Insurance, after a careful inspection of the Boilers, covering all loss or damage to

BOILERS, BUILDINGS, & MACHINERY, arising from the Explosion of STATIONARY, MARINE, and LOCOMOTIVE STEAM BOILERS.

Jos. B. REED, General Manager and Sec.-Treas. B. F. HEDDES, General Inspector. HEAD OFFICE, TORONTO. THOS. WILLIAMS, Inspector, American House, Montreal 13-20-26-125

\$77 A WEEK to Agents, Old and Young Male and Female, in their locality. Terms and OUTFIT FREE. Address I. V. VICKERY & CO., Augusta, Maine. 13-1-45

DOMINION PLATE GLASS INSURANCE OFFICE ALEXANDER RAMSAY,

37, 39 and 41 ROULET STREET, MONTREAL. Reference: Citizens' Insurance Co. 13-1-47

THE COOK'S FRIEND

BAKING POWDER

Has become a HOUSEHOLD WORD in the land, and is a HOUSEHOLD NECESSITY

in every family where Economy and Health are studied. It is used for raising all kinds of Bread, Rolls, Pastry cakes, Gribble Cakes, &c., &c., and a small quantity used in Pie Crust, Puddings, or other Pastry, will save half the usual shortening, and make the food more digestible

THE COOK'S FRIEND

SAVES TIME. IT SAVES TEMPER. IT SAVES MONEY

For sale by storekeepers throughout the Dominion and wholesale by the manufacturer.

W. D. McLAREN, UNION MILLS, 13-17-52-1-0 55 College Street.

LEA & PERRINS' CELEBRATED

WORCESTERSHIRE SAUCE, DECLARED BY CONNOISSEURS TO BE THE ONLY GOOD SAUCE.

In consequence of Spurious Imitations of Lea & Perrins' Sauce, which are calculated to deceive the Public, LEA & PERRINS have adopted A New Label, bearing their Signature, thus—

Lea Perrins

which will be placed on every bottle of Worcestershire Sauce, after this date, and without which none is genuine.

November 1874. ** This does not apply to shipments made prior to the date given.

Ask for LEA & PERRINS' Sauce, and see Name on Wrapper, Label, Bottle and Stopper.

Wholesale and for Export by the Proprietors, Worcester: Crosse & Blackwell, London, &c., &c.; and by Grocers and Oilmen throughout the World.

To be obtained of MESSRS. J. M. DOUGLASS & CO., MONTREAL, MESSRS. LEIGHTON & CO., MONTREAL. 13-1-36

HUTCHISON & STEEL, ARCHITECTS, Valuers of Real Estate, Buildings, &c., 121 St. James St. A. G. HUTCHISON. A. D. STEEL. 13-9-52-87

SMITH'S NATURE'S REMEDY.

The GREEN MOUNTAIN Wingate Chemical Company, Montreal. CURES Scrophula, Erysipelas, Cancers, Piles, Syphilis, Heart-Disease, Liver complaint, and all Eruptions of the Skin. Sole Agents for Canada.

PURELY VEGETABLE. RENOVATOR.

CHEAPEST AND BEST.



JOHN DOUGALL & SON, 218 and 220, St. James Street, Montreal. Electrotyping and Job Printing, Chromatic and Plain cheaply and neatly done.

CHROMOS

LARGE AND SMALL—FOR DEALERS, AGENTS AND TEA STORES.

The largest and finest assortment in North America. Twenty 9 x 11 Chromos for \$1.00. Address W. H. HOPE, 26 Bleury St., Montreal, Headquarters for Foreign and American Chromos. Send for Superbly Illustrated Catalogue. 14-1-36-134

DR. A. PROUDFOOT, OCUList & AURIST. Special attention given to DISEASES OF THE EYE AND EAR. Artificial Eye inserted 37 Beaver Hall, Office hours before 10.30 a.m., 3 to 5 and 7 to 9 p.m. 13-7-52-77

FOR WANTS: THE ROYAL FOOD AND INVALIDS. NUTRITIOUS, DELICIOUS & ECONOMICAL. FOR SALE EVERYWHERE. 14-1-36-132

HOPKINS & WILY, ARCHITECTS and VALUERS, 13-9-52-88 253 St. James Street, MONTREAL

THE CANADA SELF-ACTING BRICK MACHINES!

Descriptive Circulars sent on application. Also HAND LEVER BRICK MACHINES. 244 Parthenais St., Montreal. 13-12-52-98 BULMER & SHEPPARD.

JAMES WRIGHT, 501 Craig Street. Manufacturer of Wood, CARPETING, CHURCH, Bank, Store and Office Fittings, Fancy Wallpapers, Parquet Floors, Glazing, Turning, Sawing, Planing, &c. 1st prize for Wood Carving at Toronto and Ottawa Exhibition of 1874 and 1875. 13-8-52-85

Painting & Decorating. In first class style. J. MURPHY, 766, Craig St., Montreal. 14-1-52-135