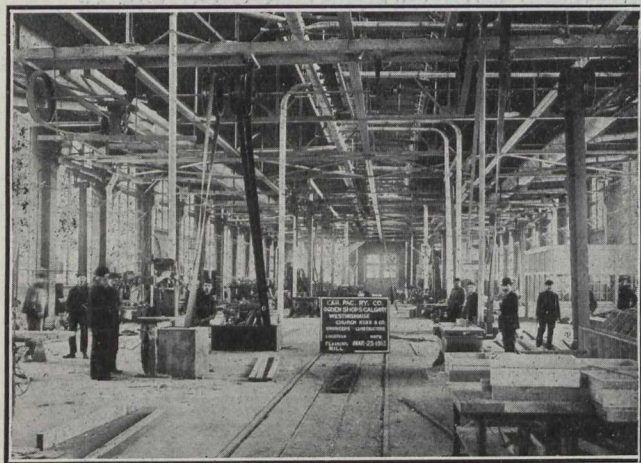


utilized to handle all heavy material to and from the cars from the storage space that is provided between the storehouse and the erecting shop. The use of this crane practically eliminates manual handling of heavy material, and permits of handling numerous small parts in quantities when contained in suitable receptacles.



Interior of Planing Mill.

Material Platforms and Scrap Dock.—A material platform, 90 feet wide and about 350 feet long, abuts one end of the storehouse. This platform is also carried along either side of the storehouse, where it is 15 feet wide. It is constructed of concrete retaining walls, filled in with earth, and a topdressing of cinders covers the fill, except alongside of storehouse, where plank covering is laid. The platform extends to and along the sides of the oil-house.

Oil-house.—For storing and distributing oil a separate building is provided convenient to, but located far enough away from, the storehouse and other buildings to eliminate the fire risk. It is constructed with tile walls (plastered on the exterior) on concrete foundations, with a concrete basement at one end for the tanks which contain the oil, for local distribution. The roof is of reinforced concrete slab, as is also the floor of the pump-room over the basement. That part of the building used for storing oil in barrels has a cinder floor. The pump-room is partitioned off with a brick wall, carried up to make a fire-wall.

Ten oil tanks, with measuring pumps, are installed, and provision is made for conveniently emptying the oil from barrels into the tank in the basement.

The oil-house basement is heated by the direct system to the high temperature necessary to render the oil fluid during extreme cold weather, the direct system being also used to heat the rest of the building. The lighting of the building is with keyless socket marine type incandescent lamps. Fire protection, including sprinklers, is installed.

Coach Repair and Paint Shop.—The building containing these departments is 362 feet long by 146 feet wide, having fifteen tracks on 24-inch centres. It is constructed with hollow building tile carried on concrete foundation. Heavy timber posts support the roof, which is of slow-burning mill construction. Otherwise the construction is the same as that described for the main shop building.

Space is provided along one side of the building for varnish room, upholstering, office, sub-store, paint storage, heating plant and air-brake repairs.

When necessity arises for increased shop capacity in this department it is proposed to obtain such increase by the

erection of another shop on the opposite side of the transfer table.

Heating is by the indirect fan system, with underground concrete and tile ducts. Lighting is by incandescent lamps. Compressed air, steam and water service, including fire protection and automatic sprinklers, are provided. Toilets, lavatories, and conveniences for the men are also supplied in this shop.

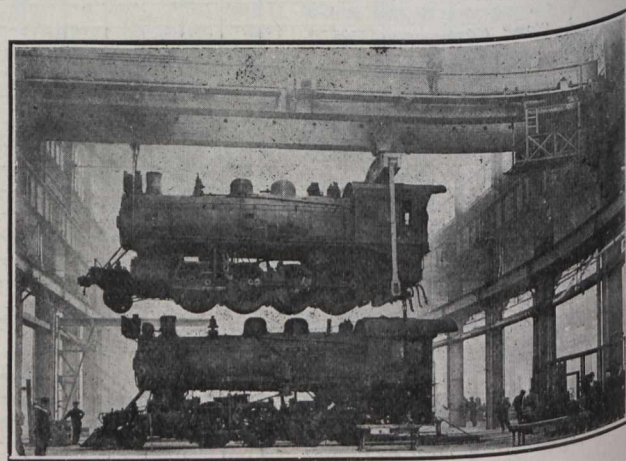
Freight Car Repair Shop.—This building is 231 feet wide by 303 feet long, and contains eight repair tracks spaced in pairs, with industrial track between each pair of repair tracks. A tile wall partitions off the shop, fifty feet wide along one side, which will contain the blacksmith forges, tools, heating plant, foreman's office, toilets, and lavatories.

The building is of structural steel frame, with tile walls, plastered on the outside, with saw-tooth roof construction. The general construction of the building otherwise is the same as that of the other shop buildings. An overhead trolley beam is provided to permit of handling timbers with a trolley into the shop.

Compressed air, steam and water service piping, and fire protection, including automatic sprinklers, are supplied. Heating is with the indirect fan system, with underground concrete and tile ducts. Lighting is by 100-watt Tungsten lamps.

The location of this building alongside of the lumber yard permits of handling lumber so that it can be passed through into the shop without rehandling.

Planing Mill.—This building is 303 feet long by 80 feet wide, and contains the woodworking machinery. The frame is of structural steel, carried on concrete footings. The general construction of the building is the same as that of the other shop buildings. A track extends through the building longitudinally to permit of movement of material in at one end to the various machines and out through the opposite end with the minimum amount of handling. The



Interior of the Locomotive Shop, Showing 120-Ton Locomotive Crane.

building is located so as to be convenient to the passenger car shop and the freight car shop. The lumber yard is located back of and at one end of the planing mill.

Suitable piping has been provided for distributing compressed air and water. The fire protection system includes automatic sprinklers.

Provision is made for toilets, lavatories, and metal lockers for the men employed in this department.

Heating is by the indirect fan system with galvanized iron heating ducts. Lighting is by mercury vapor lamps.