

FIG. 1800. PLAN OF GROUNDS.

THE HOME AND ITS ENVIRONMENT.

OUR Canadian farmers and fruit-growers give too little attention to the decoration of their home surroundings. Every one may not be able to build an expensive house, but even a neat little cottage surrounded by the adornments of nature may become more beautiful than a mansion unadorned as to environment by either nature or art.

In the beautifying of a home, trees are essential. They are not only beautiful in themselves, but often serve to shut out objectionable views, to afford shelter from high winds and also to give shade from the heat of the sun. In grouping trees for ornamentation one should become quite familiar with the various forms and characteristic features of trees, for if a man knows nothing of the

shape which a tree will take when fully matured he may make serious blunders.

One mistake commonly made is planting too close. This very often shuts out views

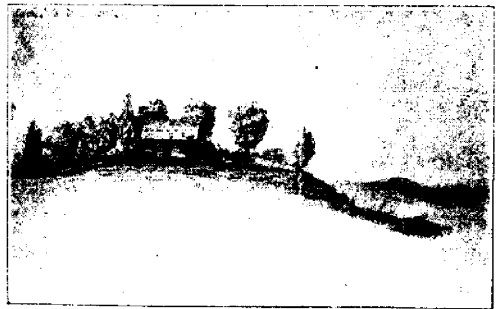


FIG. 1801.

HOUSE FIRST ON AN OPEN PLAIN IMPROVED BY PLANTING TREES, ETC.