

PARTS
Camper
urist

ent and health require for the camper. The yside markets found along the main high- e tourist the opportu- up a variety of sup- ll serve to diversity of fare.

ge person much of the motor camping will de- quality of the meals ed. If the day be a good breakfast of fee, a rasher of crisp plate of hot flapjacks, ed potatoes, the day begun and everything to pass off delightfully, ith dishwater coffee, temperature, soggy, jacks, soft, stringy bu- reasy potatoes, and the ay will be equally dis-

DOORSMAN'S HAND- y. S. Watson and Capt. s, Jr. Published by D. 2, New York Cloth 6% in. 320 pages, fully

preliminary chapter of ring the general subject including tents, packs, s, tools, camp furniture hing, medicine, etc. chapters go into such "Big Game Hunting," "Rifles and Pistols," "Camp Shooting," "Wing Camp Cookery," "Dogs," "ig Game Laws," "Fishing i "Game Laws," "Fishing s book is a very comple- s guide giving him what now as a woods-man and is bound in compact n inch thick, and can be i in the side pocket of a venient reference.

ALEMITE
Service Here

That's our one best bet—yours too. Over 300,000 motorists wouldn't be using this system of chassis lubrication if it weren't. No tying your car up all day for lubrication, if it's Alemite-equipped. We can lubricate your chassis while you're smoking a cigarette. Drive your car on the rack and watch it being done.

REPAIR WORK OF ALL KINDS PROMPTLY DONE

Auto Accessories of all Kinds

Gasoline, Motor Oils and Greases

Murray's Garage

Phone 39

A. G. Murray, Prop.

Roseberry St. West

PATRONIZE

The Original Auto Bus Service

BETWEEN

Campbellton and Matapedia

By patronizing the original Auto Bus Service on the Campbellton-Matapedia Route you will help to establish a permanent service through a section of country where there is urgent need of such accommodation.

The Duncan Bus is thoroughly reliable. Operated by a Competent and efficient driver, it has not missed a single trip this season. It is giving a service that can be depended upon and only by generous patronage can this standard of service be maintained.

We respectfully solicit your co-operation in our efforts to meet the needs of the day in establishing a permanent service on this route.

AUTO BUS SERVICE

Clarence M. Duncan

PHONE 8010

PROPRIETOR

PHONE 8010

If you ask Where
to Buy

Comeau & Co., Ltd.

Will be Recommend-
ed Every Time

TWO STORES



Hartt & Talbot

Footwear for Men

Cooper Caps

Brock and

G. B. Borsalino Hats

Tooke and Arrow

Shirts, Collars and

Underwear

Fashionable
Dresses

The latest styles from the fashion centres, made by the most reputable firms.

Coats

Including the sport styles, pleasing colors and effective and up-to-date styles, skirts for outing and general wear, UNDERGARMENTS, HOSIERY, BLOUSES, HOUSE-DRESSES, ETC.

Men's Wear

OVER 1000 SUITS

The highest grade clothing, all the best makes

Fashion Craft

Samuel Hart

Prince Clothing

Semi-Ready

Made to Measure

A Specialty

Woods Tents, Packsacks, Hunting Bags, Golf Bags, Flags, Etc.



Dry Goods

We always have a good stock of Fancy Dry Goods, such as Silks, Voiles, Ratines, etc., and the staple lines, Lawns, Linens, Gingham, Cotton, Sheet, Pillow Cotton, Ribbons, etc.

We are Agents for Pictorial Review Patterns.

Our Economy Sale ends his week. Profit by the bargains during the last few days.

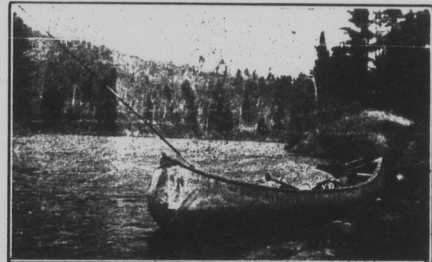
MAIL ORDERS

We give careful attention to Mail Orders and our staff is instructed to make the most careful selections for our out of town customers. All mail orders are treated as approximations and goods may be returned to be exchanged or for refund of money within five days. We solicit your MAIL ORDERS.

BATHURST AS A POINT OF
PARTICULAR INTEREST TO THE
TOURIST OR HOLIDAY GUEST

Ideally Situated in a Beautiful District Abounding In Delightful Camping Grounds, Lakes and Rivers—Excellent Facilities for Healthy Out Door Sport of all Kinds.

With its ideal location and splendid facilities for healthy out door recreation, the town of Bathurst will always rank among the most charming points of interest for the tourist or vacationist. An industrial town with a population of about 5,000, it is situated at the head of Bathurst Basin on the Baie des Chaleurs, in one of the best hunting and fishing districts in the Province. It is on the main line of the Canadian National Railways about 500 miles from Montreal and 200 miles from St. John. All through trains from Montreal to Halifax stop here and the town and surroundings have Brunswick, Matapedia and follow rare charms for the summer visitor.



The main highway leading from the Baie des Chaleurs following the 10th Province of Quebec along the beautiful Matapedia Valley and the Baie des Chaleurs to Halifax, St. John, or Fredericton also passes through Bathurst. On the shores of the Baie des Chaleurs are smooth sand beaches which are unexcelled for bathing. The best hunting and fishing districts in the province are easily reached by motor or team. Competent guides are located here, and supplies and equipment for the hunter and camper can be purchased or hired at reasonable rates. The guides for hunting and have their camps on the headwaters of the Nipisiguit and Teteouche rivers—territory right in the heart of the crown lands of New Brunswick. Comfortable lodges for fishing are located along the Nipisiguit. These can be leased by periods, the lease carrying with it some of the finest salmon and trout fishing which can be found in any part of Canada.

Entering from the State of Maine at ST. STEPHEN the blue route will lead you to St. John a distance of 88 miles passing through Oak Bay at 6 miles, St. Andrews at 20 miles, St. George at 30 miles, Lepreau at 62 miles, Musquash at 71 miles, and Fair-

vile at 85 miles. You then continue along to Moncton a distance of 96 miles passing through Robitaille at 8 miles, Hampton at 24 miles, Sussex at 45 miles, Petitcodiac at 71 miles, Riverview at 76 miles, and Salisbury at 82 miles. From Moncton you follow the blue route to Bathurst and the Quebec border passing through Bouchette at 41 miles, Buxton at 56 miles, Lichfield at 59 miles, St. Louis at 66 miles, Chatham at 97 miles, then through Nelson crossing bridge over Miramichi river to Newcastle at 103 miles, New Brunswick at 103 miles, Tracadie at 154 miles, Carleton Place at 176 miles, Grand Anse at 191 miles, and Bathurst at 217 miles. Entering from the State of Maine at St. Stephen you can also take the Yellow route through Fredericton to Bathurst via Moore's Mills Lawrence Brookway, Thompson, Harvey, Louisa Creek, Fredericton, Marysville, Covered Bridge, McGivney Junction, Boiesville, Doaktown, Blackville, Newcastle and from then on the same as from Moncton.

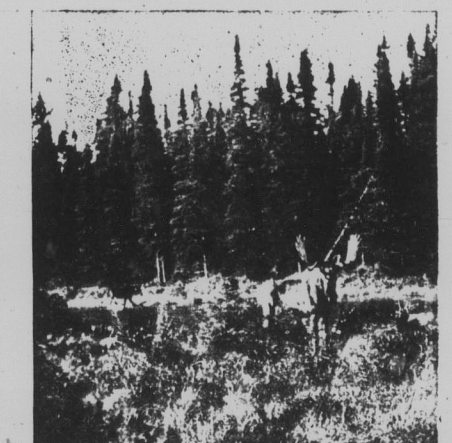
WHERE TO GET MORE INFORMATION

Reliable information as to Hunting,



fishing, and canoeing trips, guides, etc., can be obtained by addressing the Secretary of the Northern New Brunswick Fishing and Hunting Association, Bathurst, N. B. It is an easy matter to plan a hunting, fishing or canoe trip of eight or ten days' duration but oftentimes it is difficult to make arrangements for a day's outing. Perhaps you are touring and can only stop for a day or you may want to evade a hot wave in the city and rush out by the fastest train to some cool and refreshing spot where you can enjoy a little of your favorite sport.

Then come to Bathurst and have a holiday worth remembering. AT THE BEACHES Perhaps you would like a day at the beaches to have some salt water bathing. If so all you need do is to inform the Hotel Manager and he will plan the day's outing for you. Youghall beaches are one of the finest beaches in Canada and you can reach them either by motor boat or auto from Bathurst, being three miles by water and four miles over a good auto road. You can either take your lunch with you or get your meals in the dining car and we are ready to jump aboard. In an hour of travel over the railway where we are liable to see at any moment a nimble footed deer or a moose cross the track we will be landed at Nipisiguit. Grand Falls sixteen miles distant. Here we will see the beautiful falls and the power plant of the Bathurst Electric & Water Power Co., who supply electric current to the town of Bathurst as well as several other towns in the vicinity and also turns the wheel of the big industry of the Bathurst Co. Ltd., who operate the only saw-mill in the maritime provinces. We will also see mountains of iron ore at the plant of the Canada Iron Corporation. After seeing the clubhouse of the Nipisiguit Angling Club and having a look at the hundreds of salmon in the great pool at the foot of the falls we will put our canoes in the water and start for downstream. The scenery along the Nipisiguit is most beautiful and will want to take it all in so by the time we reach Middle Landing it will be time for lunch so we decide to boil the kettle here. After lunch we proceed down stream passing by the Chain of rocks. We may stop for a moment at Pabineau Falls



to watch the salmon trying to shoot up the falls and then we will be off again passing by the clubhouse of the Nipisiguit Angling Club and we reach Nipisiguit Junction again where we can either pull in our canoes if it is getting late and return by auto or proceed down stream to Bathurst by canoe.

GETTING MORE MILEAGE The warm season is the time to realize the highest fuel economy of which your car is capable and as your summer mileage is very probably several times your winter mileage, it really pays to do everything possible to realize the full saving which can be effected. During the winter your chief concern has probably been to have your engine start promptly and quickly attain smoothness of operation and full power. As these requirements can best be satisfied by the use of a rich or slightly over-rich mixture, it is likely that the adjustment of your carburetor has been made rather "fat" for cold weather service. There are, of course, many motorists who depend upon increased use of the choke in winter driving and do not alter the carburetor setting, but it is a very common practice to open the needle valve a little, put in a larger jet or in some other way to increase the richness of the mixture as a cold weather expedient. Tests made upon a large number of cars, selected at random, have shown that the mixtures upon which the engines of a very large proportion of them were running were sufficiently over-rich to be distinctly wasteful. Whether or not you enriched your engine's mixture last autumn, it is worth your while now that warm weather has come to see if it cannot be made more economical, without material effect upon performance. If it can be weakened you will not only save a lot of gasoline but you will reduce the rate of dilution of your engine oil and diminish the tendency toward carbonization. If you are one of those who do not make your own minor adjustments, we suggest that sometimes, when your

THREE ARE KILLED

Two Women and Boy Die When Train Hits Truck—Six Injured.

Philadelphia, July 30—Two women and a boy were killed and six persons were injured, five seriously, when a Reading train crashed into an automobile last night at Millow Grove Park.

Those killed were Mrs. Morris Stein, Mrs. Hester Moninger and the late Mrs. Hester Moninger.

Witnesses said either Mrs. Julius Stein, who was driving the automobile, became confused as she approached the crossing or that the breaks of her car failed to hold.

The President,
The Manager,
The Buyers,
The Staff.