

**COMPETITION FOR LIBRARY PLANS.**

The rules governing the competition for plans for the proposed public library in Toronto have been issued. The architect whose plans are selected will be the winner of the first prize, and will have as his reward the supervision of the erection of the building. The second prize will be \$350, the third \$250, and the fourth \$150. All plans intended for the competition must be in the hands of the Secretary of the Public Library Board on or before January 31st, 1906.

The building is to be at least twenty-five feet from either College or St. George street, on the corner of which the new library is to be erected. The building must be thoroughly fireproof, and may be of brick, terra cotta or stone, and the style is to be simple and dignified, appropriate to the site.

There must be a high basement not less than sixteen feet from the floor to the ceiling, and be absolutely dry, with trenches under the floor for all heating and other pipes, so as to allow of all such pipes being repaired or altered without injury to the floor or inconvenience to patrons.

**SAMSON CEMENT**

MANUFACTURED BY

**THE OWEN SOUND PORTLAND CEMENT COMPANY, LIMITED**  
Owen Sound, Ont.

Works at **SHALLOW LAKE, ONT.**

Write us for prices

**The ALGOMA STEEL COMPANY, Limited**  
Sault Ste Marie, Ont.

Is now booking orders for—

**STEEL RAILS**

For late Summer 1905, and Early Spring 1906 Delivery.  
Parties intending purchasing will find it to their interest to let us have their specifications at an early date so as to ensure desired deliveries.

**Drummond, McCall & Co.,**

OFFICE: Canada Life Building, MONTREAL

GENERAL SALES AGENTS

**One Grade****"The Cement of Quality"****The Highest**

# NATIONAL PORTLAND CEMENT



Acknowledged by competent Architects and Engineers to be unequalled for fineness, wonderful development of strength and sand carrying capacity.

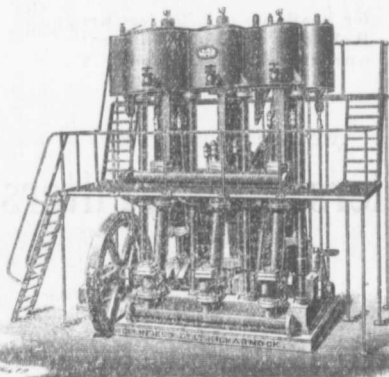
**THE BEST IS THE CHEAPEST****The National Portland Cement Company**

Limited

Toronto Sales Office: 22 James Building

Head Office and Mills: DURHAM, ONTARIO

## Glenfield & Kennedy, Limited

**KILMARNOCK**

Sluice Valves, Air Valves, Relief Valves, Hydrants,  
Stand-Posts

AND ALL CLASSES OF WATER FITTINGS

**Accumulators, Pumps, Hydraulic Machinery****Penstocks, Flushers, Sewerage Fittings****KENNEDY'S PATENT WATER METERS.** Over 165,000 in use.**ASHLEY'S PATENT DEEP-WELL PUMPS**

Canadian Representative: **John T. Farmer,**  
Coristine Building, Montreal