

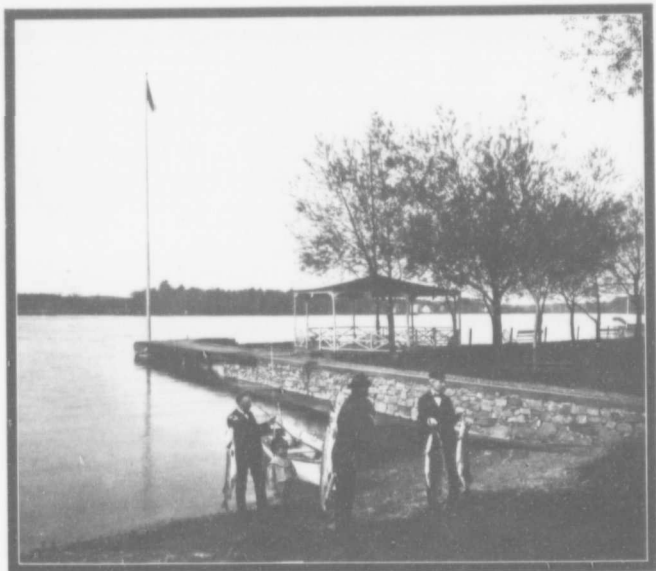
Other places of importance on the route of Trains Three and Four between Kingston and Montreal are Thousand Islands Junction (the gateway to the Islands via Gananoque) where steamers are taken for the several popular resorts situated in the Thousand Islands. The Gananoque Inn, a modern and popular summer hotel, is located here and offers exceptionally good accommodations to tourists, travelers and pleasure-seekers.

Brockville, Prescott and Cornwall are other thriving towns that are passed and which have developed into notable manufacturing centers.

Thirty miles east of Cornwall, we reach CotEAU Junction, where the Ottawa Division of the Grand Trunk crosses the main line, leading north to Ottawa, the Capital city of Canada, and south to connection with the Central Vermont Railway. A side trip is afforded to Ottawa on first-class tickets from west of Toronto to points Montreal and east.

Nearing Montreal, the fashionable suburban resorts where the elite of the metropolis of Canada spend their summer months, are passed. Many of these places are picturesquely situated amidst some of nature's best scenery. At Ste. Anne de Bellevue many of Montreal's merchant princes have built handsome villas, which they occupy during the heated term of

Ste. Anne  
de  
Bellevue



MASKINONGE FISHING, STE. ANNE DE BELLEVUE, QUE.