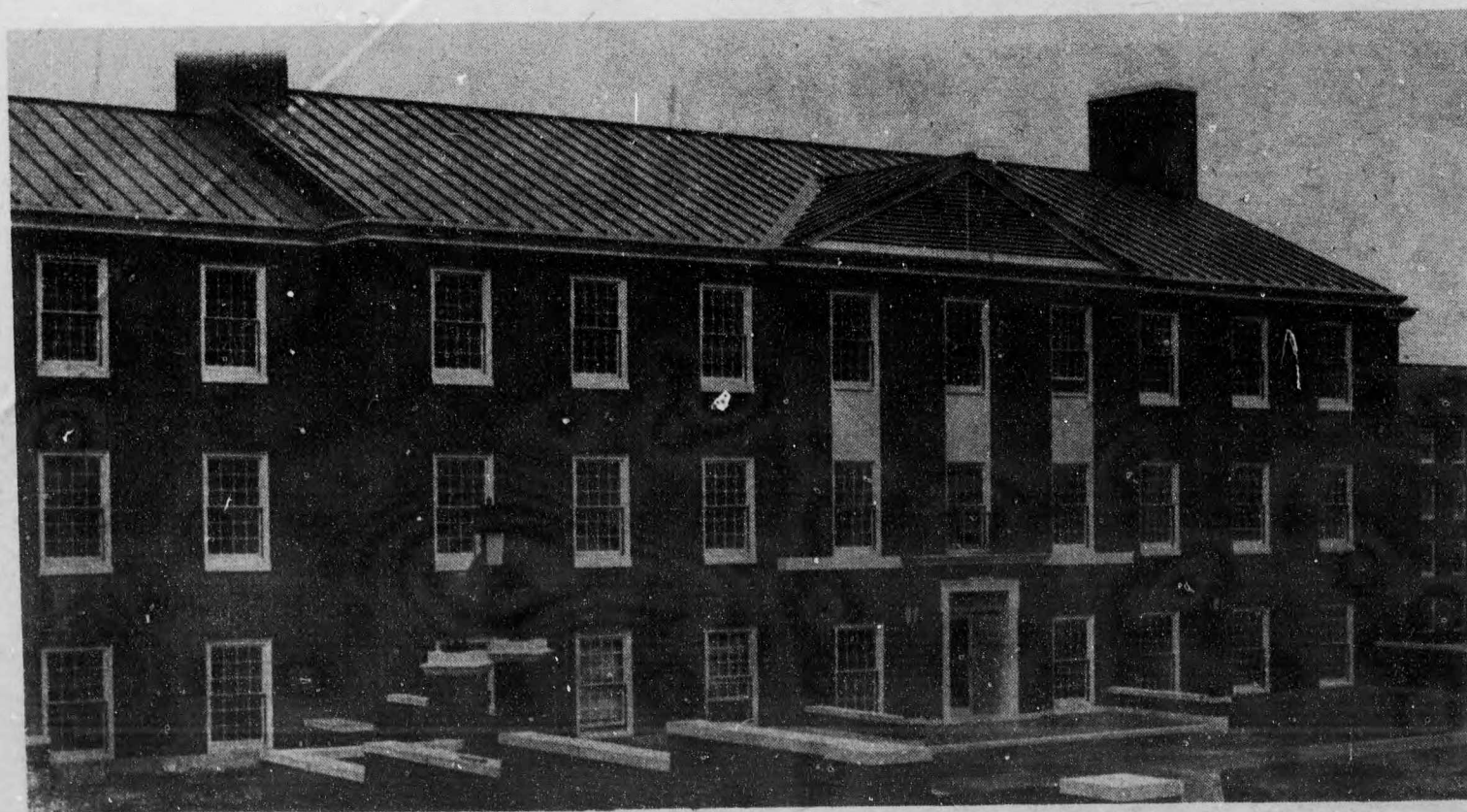
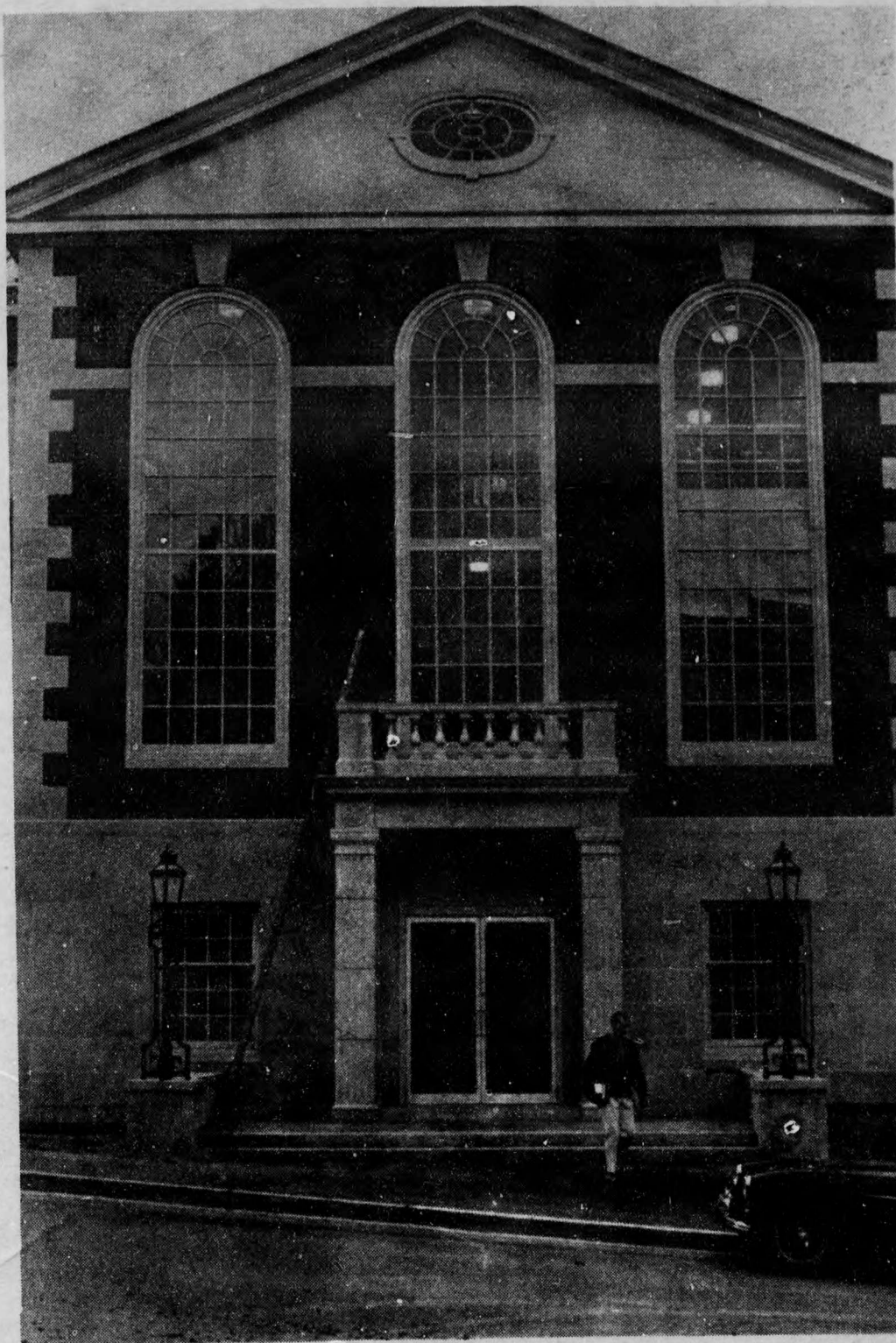


The Compleat Guide
To Georgian Brick, or...
The Oldness
of the New

This is the Law School. Above the door you see a fake balcony, an integral part of the general fakeness of Georgian Brick architecture. You can't stand on the balcony because there is no door leading to it. The SUB has a balcony with a door leading to it, but you can't stand there either. There is no insurance coverage on it.



This is the Psychology Building. That's why it looks like a mental institution. Of course, we can always count on a fake balcony to break the bleak monotony of the brick wall. Pretty impressive, that balcony. (It's over the door.)