

DEAD, 7 PROSTRATED
IN BOSTON WEDNESDAY

Mercury Reached 93 Once and was
Above 90 for Five Hours.

Boston, Aug. 18.—The third day of the heat wave which has gripped this city since early Monday, resulted on Wednesday in three deaths and seven known prostrations. The mercury which reached scorching 93 as its highest point, remained above 90 for five long hours and was responsible for thousands flocking to the beaches and other resorts to escape the scorching sun rays.

Four persons, including a mother and son, lost their lives in Eastern Massachusetts waters. Mrs. Alfred J. Demers of Worcester, seeing her 10-year-old son in danger in an Auburn pond, went to his aid. Both were lost.

After rescuing two little girls from drowning at Pembroke and while bringing in a third, Jeremiah P. Sylvester, of Quincy, fell exhausted in three feet of water and before help arrived he was drowned.

Mrs. Irene H. Forbes, of Melrose, lost her life in a pond when she leaned too far from the side of a boat while drying her hair, and fell into the water.

CRIME AND PROHIBITION.

(Halifax Chronicle.)
In a recent despatch from Ottawa there was a palpable attempt to misrepresent facts in the statement that "the measure of prohibition adopted in Canada shows so far but little neutralising effect upon crime in this country, according to an abstract of criminal statistics just issued for 1921 by the Dominion Bureau."

It is true, as The Toronto Star remarks, that the figures for the year show an increase in crime for the Dominion as a whole, including the wet provinces of Quebec and British Columbia. But either through carelessness or for ulterior reasons, no comparison is made with the years before prohibition came into effect.

Going back to pre-war days we find Canada is less given to crime and violation of civil by-laws than it was eight years ago. Take the following figures for example:

Number of charges of indictable offences in 1914, 28,007. In 1921, 24,943.
Number of convictions for non-indictable offenses in 1914, 183,068. In 1921, 157,704.

Number of persons convicted of drunkenness in 1914, 60,067. In 1921, 34,392.

This works out to a reduction of 18 per cent. in the more serious criminal cases; 13 per cent. in the less criminal cases, and 42 per cent. in drunkenness as against eight years ago. And the census shows that in the last ten years the population of the country increased 21.95 per cent.

For reasons that can be readily imagined a certain class of citizens like to believe and spread the news that a crime wave has swept back and forth over the country since most of the provinces adopted prohibition. But, as the Star says, "it is a poor kind of citizen who thus slanders his own country."

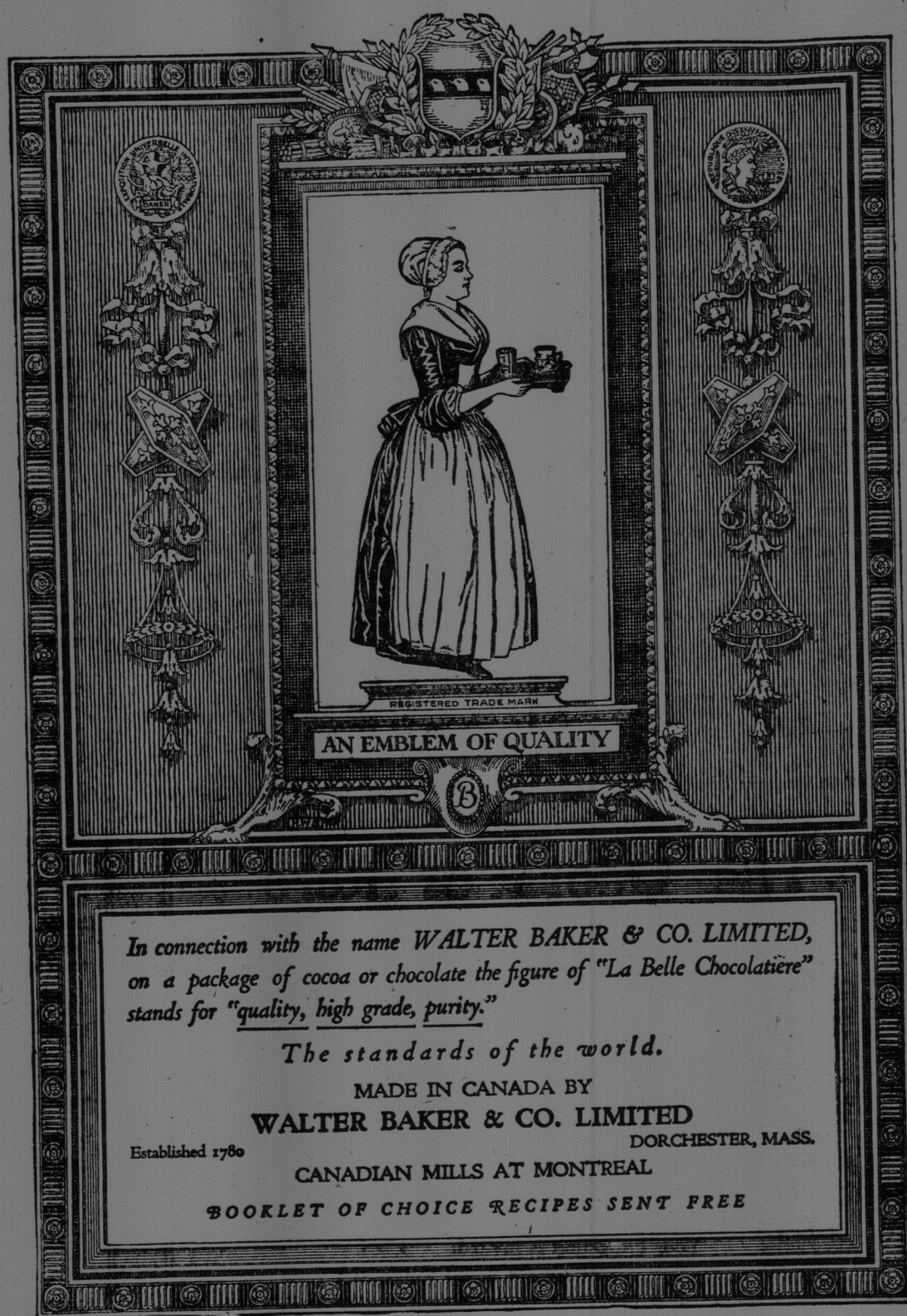
SUSSEX PERSONALS

(Sussex Record.)
Mrs. W. J. Brown and Weldon Brown of St. John are visiting Mr. and Mrs. F. S. Creed, this week.

Miss Cora Shaw of St. Stephen, is the guest of Miss Amy Dawson, at the Methodist parsonage.

Mrs. Arnold Wry and children of Revere, Mass., are visiting at "The Willows," guests of Mr. and Mrs. C. W. Stockton.

Mrs. Charles dePencier, of Winnipeg, and little daughter Betty are the guests



AN EMBLEM OF QUALITY

WALTER BAKER & CO. LIMITED

In connection with the name WALTER BAKER & CO. LIMITED, on a package of cocoa or chocolate the figure of "La Belle Chocolatiere" stands for "quality, high grade, purity."

The standards of the world.

MADE IN CANADA BY
WALTER BAKER & CO. LIMITED
DORCHESTER, MASS.

Established 1760

CANADIAN MILLS AT MONTREAL

BOOKLET OF CHOICE RECIPES SENT FREE

PORTLAND DEALERS TOLD
TO WITHDRAW COAL BOOST

Augusta, Aug. 19.—Fuel Director Andrew P. Lane Tuesday night wired certain Portland dealers that if the papers were correctly quoted they have advanced the price of bituminous coal from \$9 to \$10.50 per ton.

"This price should be withdrawn," says Director Lane in his telegram, "as the coal that you are offering at \$10.50

is based on old coal which you have contracted for, and does not cover the coal which you have purchased recently."

The state fuel administrator announced that it is informed as to the price of coal at the mines and then figure the cost of freight and other charges, and it intends to follow up all advance in price and give the information it obtains to the press. If the report of the advance in price is correct, the state fuel admin-

istration says that it does not believe that coal on hand and received previous to the present development should be sold at any price in excess of what was formerly charged.

Bix (in art gallery)—I wonder why this nude figure is entitled "Procrastination."

Dix—Because of her putting everything off I suppose.

DODGE BROTHERS
BUSINESS COUPE

Built and priced for practical, everyday use. Beauty and lightness skillfully blended with rugged strength.

The steel body finished in Dodge Brothers baked enamel. Genuine leather upholstery. Ample doors, window levers, heater and cord tires. A wide, straight seat. Spacious carrying compartments.

In short, closed car dignity and protection at little more than the price of an open roadster.

The price is \$1600.00 delivered

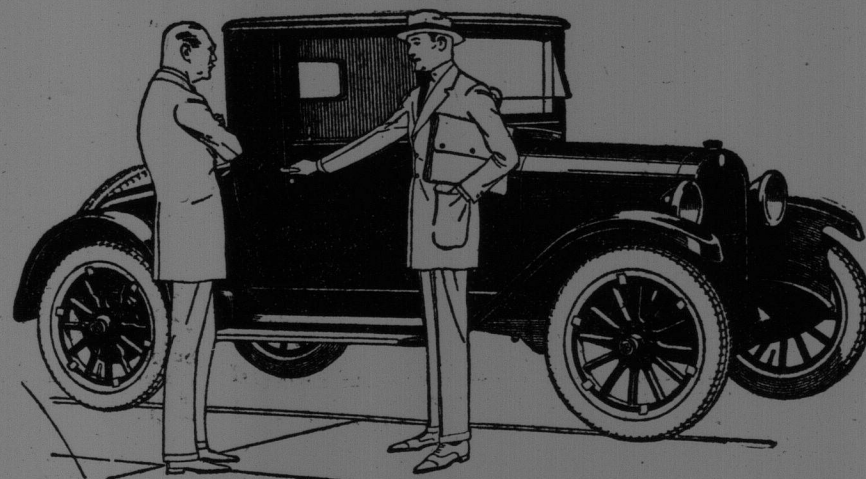
19 SERVICE STATIONS IN
THE MARITIME PROVINCES

THE VICTORY GARAGE AND SUPPLY CO.,
LIMITED.

Telephone M. 4100

92-94 Duke Street

St. John, N. B.



Old Dutch
for
Kitchen
Utensils

Wont Scratch.
Contains no lye
or acids.
Goes further.
Does better work.

MADE IN CANADA



"The BIG 4"
of the St. Lawrence
Route

Every Saturday a White Star-Dominion Line steamer sails from Montreal and Quebec to Liverpool. Book your passage this summer on the MEGANTIC, the CANOPIC, the CANADA, or the REGINA.

White Star, Red Star and American Line sailings from New York every Saturday, provide a regular service to Liverpool, Cherbourg, Southampton, and Baltic and Mediterranean Ports.

NAGLE & WIGMORE,
147 Prince William Street, St. John, or Local Agents.

Follow these Recommendations

How to read the Chart

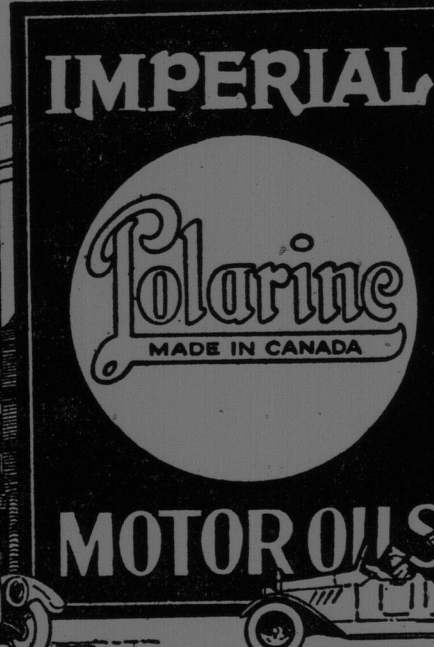
I.P.O. means Imperial Polarine Oil.
I.P.M. means Imperial Polarine Medium Oil.
I.P.H. means Imperial Polarine Heavy Oil.
I.P.T. means Imperial Polarine Transmission Oil.

MAKE OF AUTOMOBILE	Engine Lubricant		Transmission	Differential
	Summer	Winter		
Chevrolet (8 Cyl.)	I.P.H.	I.P.H.	I.P.T.	I.P.T.
Model 480	I.P.M.	I.P.M.	I.P.T.	I.P.T.
All other Models	I.P.H.	I.P.M.	I.P.T.	I.P.T.
Dodge Bros.	I.P.M.	I.P.M.	I.P.T.	I.P.T.
Ford	I.P.O.	I.P.O.	Oil Fed from Engine	I.P.T.
Gray Dorr	I.P.H.	I.P.M.	I.P.T.	I.P.T.
McLaughlin (44-50)	I.P.M.	I.P.M.	I.P.T.	I.P.T.
All other Models	I.P.H.	I.P.H.	I.P.T.	I.P.T.
Overland	I.P.H.	I.P.M.	I.P.T.	I.P.T.

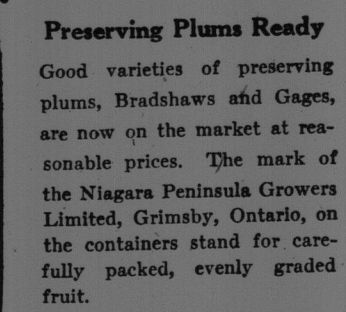
* If you drive another make of car consult the Imperial Chart of Recommendations to determine the grade of Imperial Polarine which you should be using.

Imperial Oil Limited

Manufacturers and Marketers of Imperial Polarine Motor Oils and Marketers in Canada of Gargyle Mobiloil.

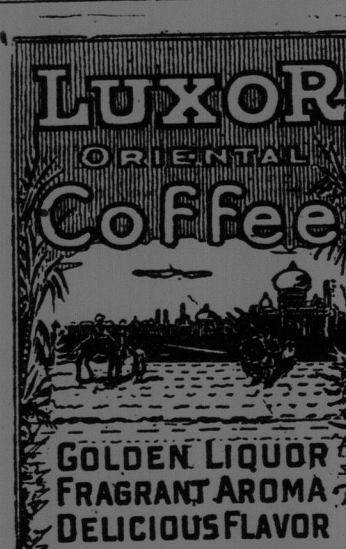


IMPERIAL
Polarine
MADE IN CANADA
MOTOR OILS



LUXOR
ORIENTAL
Coffee

GOLDEN LIQUOR
FRAGRANT AROMA
DELICIOUS FLAVOR



LUXOR
ORIENTAL
Coffee

GOLDEN LIQUOR
FRAGRANT AROMA
DELICIOUS FLAVOR

MUTT AND JEFF—JEFF SHOWS A DASH OF SPEED



By "BUD" FISHER