

Store Opens at 8.30 a.m. Closes at 5 p.m.

Take Yonge St. Escalators to 2nd and 3rd Floors.

# EATON'S DAILY STORE NEWS

## Emphasizing Some Extra Good Values From the Immense Assortments of Spring Clothing for Men

The Very Extensive Variety, Combined With the Unusual Values, Are Features of the Display

Such a Great Variety of Materials and Styles Provide Lines at Almost Any Price a Man Wishes to Pay. It's a Most Satisfying Showing. Come Thursday

### The Suits for the Young Men Feature Pinch Back Effects and Fancy Pockets

YOUNG Men's Single-breasted Suits, mostly pinch-back styles, with half belt sewn on at waist and fancy pleat effects at back. They are form-fitting and the smartest models have patch pockets with flaps that button, and 2 1/2-inch cuff on sleeves. Mostly two-button styles, with medium-width peaked or notched lapels, with patch or slanting flap pockets. Vests button high, with six buttons, and trousers are narrow and have belt loops and cuffs on bottom. They are mostly in cheviot and cassimere-finished tweeds and embody some very fine stripe patterns, in light and dark grey, brown and grey, and light and dark grey mixtures. Sizes 34 to 38. Price ..... 15.00

**Young Men's Navy Blue Suits at \$17.00**

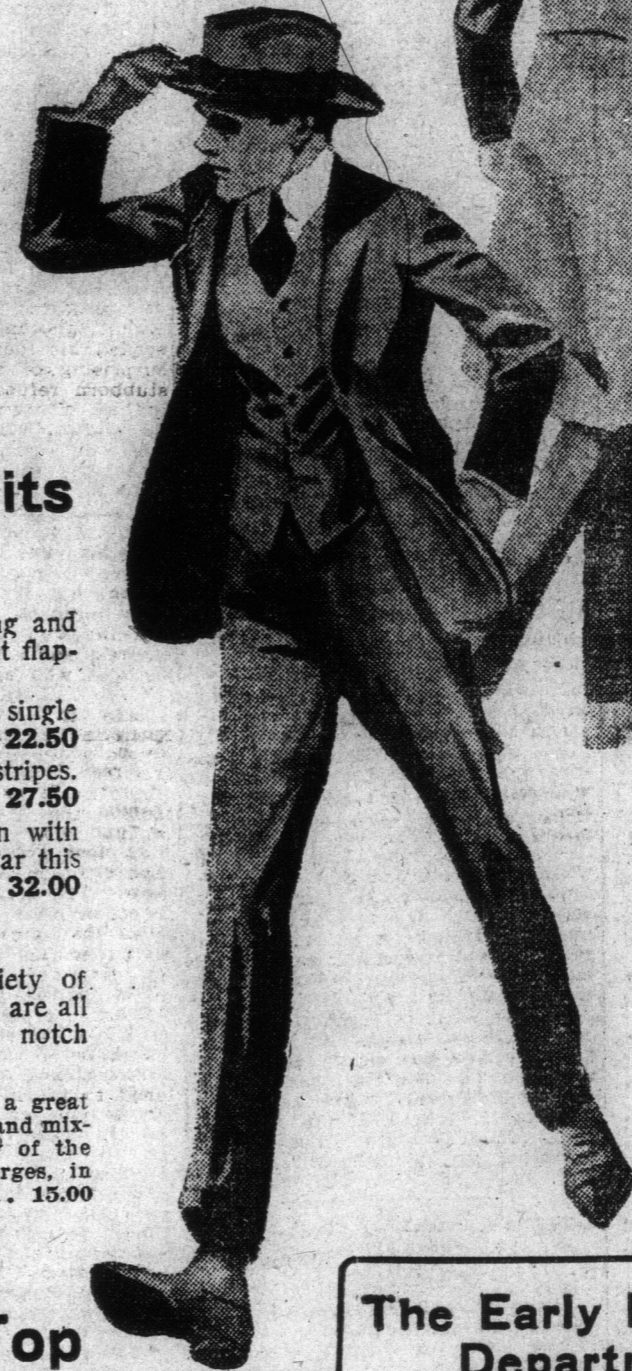
Young Men's Navy Blue Cheviot-finished Suits, in single-breasted, two-button, form-fitting styles, some with fancy pinch-back effects and half belt sewn on at waist; others plain back. All have medium width notched soft rolling lapels and straight or slanting flap pockets. 5 buttons on vest. Trousers are very narrow and have belt loops and cuffs on bottom. Sizes 34 to 38. Price ..... 17.00

**Young Men's Suits at \$20.00**

Young men's single-breasted, two-button sac styles, with neat-fitting waist and shoulders, peaked or notched lapels, straight and slanting flap pockets and serviceable linings. Five-button vest. Trousers are neat and narrow and have belt loops and patch pockets. These are made of cheviot and cassimere-finished tweeds, in large checks of purple and blue, black and blue, stripes in light hairline, and one particularly attractive model has triple stripe of red and green. Sizes 34 to 38. Price ..... 20.00

**Young Men's Suits at \$25.00 to \$30.00**

Young Men's Suits, in smartly tailored, two-button, single-breasted sac styles, with medium width notched lapels, straight and slanting flap pockets, and some with crescent-shaped patch pockets. Materials are worsteds in brown checks and stripes and dark greys; also cheviot and cassimere-finished tweeds, in light and dark grey checks, hairline stripes in black and white and plain medium shades of grey. Sizes 34 to 38. Prices, 25.00 to 30.00



MEN'S CLOTHING DEPT. MAIN FLOOR QUEEN STREET

### Stripes! Stripes! Stripes!---Very Noticeable in the New Suits for Men

MEN'S SUITS for this spring feature all sorts of stripe designs, in plain shades and many fancy effects. They are all rather conservative, but neat-fitting and dressy. Two and three-button, single-breasted sac styles, with well-defined waistlines, are the accepted styles, with natural-shaped shoulders, straight flap pockets and medium-width notched and peaked lapels. A few of the lines on special display Thursday:

One line made of cassimere-finished worsted is in black with white hairline stripes half-inch apart; also brown with alternate hairline cluster and single golden stripes ..... 18.00 and 22.50

Made of excellent quality worsteds is another line in grey with black and white pick-and-pick hairline stripes; also dark grey with light thread stripes. Price ..... 27.50

Then there are soft-finished cassimere materials, in green or blue, with dark green hairline stripes; black with white hairline stripes; dark green with grey thread stripes; black with white dotted hairline stripes; and blue with hairline purple stripe. These are very attractive and promise to be very popular this coming season. Prices ..... 30.00 and 32.00

#### A Great Variety of Patterns in Men's Suits at \$15.00

At this medium and very popular price we show an immense variety of Suits for the man who appreciates smart, yet conservative styles. They are all well tailored, in single-breasted, 3-button sac style, with medium width notch lapels, straight flap pockets and natural shoulders.

The materials include worsted, cheviot and cassimere-finished tweeds, in a great assortment of shades and fancy patterns. Light and dark grey checks, stripes and mixtures, pick-and-pick patterns, light and dark brown checks, stripes and many of the fancy colored designs. Also included are many navy blue chevots and serges, in medium and fine twills. Sizes 36 to 46. Price ..... 15.00

#### Men's EATON-Made Navy Blue Worsteds, \$10.50

With navy blue materials unusually scarce, these EATON-made worsteds are extraordinarily good value at \$10.50. They are three-button, single-breasted sac styles, with medium-width notched lapels, straight flap pockets and vent in back. Vests are five-button style and trousers are neatly cut, and finished with belt loops and cuffs. Sizes 35 to 46. Price ..... 10.50

#### Business Men's Suits of Dark Grey Worsteds, \$22.50

This particular worsted material is in finely-woven dark grey quality that lends itself admirably for everyday business wear. These single-breasted, three-button sac models we show are exceptionally well tailored and are of a quality that will give splendid service. Sizes 36 to 44. Price ..... 22.50

### 150 Men's Tweed Suits Clearing in Basement Section at \$6.25 Each

A SUIT OF CLOTHES for such a low price is almost a novelty nowadays, and for that reason we expect the lot to clear quickly on Thursday morning. On account of greater space and in order to facilitate choosing, we will have them conveniently arranged on tables in the Basement Section. These suits are made from Canadian and English tweeds, are in good patterns and should give excellent service for working suits. Stripes, checks and mixed effects, in greys, browns, give good choice. The coats are in 3-button, single-breasted style, with well-formed shoulders, medium-width lapels, close fitting shoulders, and strong body linings.

Vests close with five buttons. Trousers have strongly-sewn seams and have 2 side, hip and watch pockets. Sizes 36 to 46. Extra Special, Basement Section, Thursday morning, per suit ..... 6.25

#### Men's Soft Hats, \$3.00 Each

Featuring one of the season's new models with flat set brim, 2 1/4 inches wide. It has narrow ribbon banding, 1 inch wide, completely around the crown, which gives the hat a decided smart appearance. Colors medium, dark grey and pearl grey. Sizes 6 5/8 to 7 3/8. Price, each ..... 3.00

Stiff Hats, made of good quality fur felt, with medium full crown, slightly rolling brim with pencil edge. Each 2.00  
---Main Floor, James Street.



### Men's and Young Men's Chesterfield and Slip-on Top Coats in Immense Choice of Patterns

Light in weight, but possessing the necessary comfort required during the spring season is the purpose of these top coats.

For men the Chesterfield knee length style is the favorite and from the selection we particularly mention these.

#### "Our Leader" in Chesterfields, \$10.00

Made of plain black cheviot finished materials, with serviceable body linings throughout, are men's single-breasted, fly-front style Chesterfields, with medium-width notched lapels and straight flap pocket. Sizes 34 to 46. Exceptionally good value ..... 10.00

In same style are Men's Chesterfields, made of chevots, vicuna cloths, in Oxford and Cambridge greys and grey diagonal effects. Sizes 35 to 46 ..... 15.00

Also in same style are very refined-looking Chesterfields, made of Oxford and Cambridge cheviot and worsted-finished materials, in beautiful shades of drab and mid grey. Sizes 34 to 38. Price ..... 20.00

#### Swagger Slip-on Spring Top Coats for Young Men, \$12.50

Young Men's Slip-on Topcoats, in plain and pinch-back styles, with flap patch pockets; some have cuffs on sleeves, some are lined shoulders and sleeves, others lined throughout. They are made of light and dark tweeds, in checks, stripes, pick-and-pick and brown and green mixtures. Sizes 33 to 40. Excellent value at ..... 12.50

#### Men's and Young Men's Slip-ons, of Excellent Materials, \$35.00

Men's and Young Men's Slip-on Topcoats, in smart, swagger, single-breasted, button-through styles. Have slash pockets, with opening to inner pockets; also patch pockets with straight flaps. All box-back styles without vent.

Materials include medium-weight tweeds, in light and dark greys, browns and greens, some with large hairline stripes in alternate shade, forming a check; viz., light green has dark green stripes, fancy check lined in shoulders and sleeves. Sizes 34 to 44. Price ..... 35.00

### The Early Bargain in the Department, 150 Sample Suits

MANUFACTURERS are most particular to see that their Sample Suits are right in style, tailoring and finish. The fact that they are samples also explains the low price, for the manufacturer usually clears these at about what they cost him to produce, because he has only one or two of a kind. If you want to share in a great bargain in Spring Suits, come early Thursday.

The interesting feature is that they're in the prevailing styles for spring wear, including the newest form-fitting, pinch-back effects, with straight or crescent-shaped patch pockets, some with flaps that button, others straight and slanting flap pockets. Peaked or notch lapels. One model in particular is fashioned in the newest double-breasted pinch-back style. A three-button style, with long, narrow lapels rolling to second button and patch pockets, with flaps that button.

The materials include chevots with light grey checks, blue with light stripes, dark grey with hairline stripe, blue and green mixture, green and blue hopsack weave. Cassimere-finished worsteds, with shepherd checks and Glen Urquhart plaids, stripes; also a few homespun in light and medium shades of grey. A great assortment of patterns and colors. Sizes 36, 37, 38 chest measurement. Extraordinary special, Thursday ..... 13.75

THE T. EATON CO. LIMITED

Vertical text on the left edge of the page, including 'N TIES', 'Says Are Loyal', 'SHIP', 'MAGS', 'LAN', 'Ad. 760'.