

L. SIMPSON Store Opens 8 a.m. Closes at 5.30 p.m. H. H. Fudger, President. J. Wood, Manager. Phone Number Main 7841. We have 60 lines to Central.

### The List That Tells the Story of The Mantle Values

**WOMEN'S, MISSES', AND YOUNG GIRLS' SUITS.**  
A limited quantity. Tweed mixtures and stripes, in a variety of becoming shades; tans, navy, greens, grey, and black and white. Coats are tailored with slanting collars. Skirts have the raised waistline. Such values are few at . . . . . **9.75**

**SUITS FOR WOMEN.**  
A limited number of Suits, in new worsteds, fabrics in cream with black stripe or light with other stripes; all lined with best quality silk. Have club-notched collars with long revers; skirts have high waist line, with apron front. Special value . . . . . **\$19.50**

**NEW DRESSES.**  
For misses and small-size women, new foulards, in navy, brown, and black, with white figured designs; made in one-piece styles, with semi-low rounded neck, and turn-over collar; set-in sleeves, with turn-back cuffs, to match collar; fastened down front. Skirt hangs gracefully, with the raised waist line. Very special . . . . . **\$12.50**

**PRIESTLEY'S COATS AT \$8.75.**  
Made of best quality brilliantine, with lustrous finish, in black only. For middle-aged or elderly women. They are semi-fitting in their lines, cut with plenty of room around hips. Have collars and bottom of coat braided. Large value at . . . . . **\$8.75**

**COATS FOR MISSES.**  
Made of light-weight tweeds, in tan shades, straight in lines, and fastened at the left side. Has large collar, cuffs, and revers of tan serge, trimmed with pipings of tweed. Price . . . . . **\$7.95**

### The Simpson Store

gives each day a list of items which, either because of lowered prices or unusual quality, show values above the ordinary. But, quite aside from these, there are hosts of articles for every purpose, which offer the advantages of wide selection and unlimited supply—things you need every day, and perhaps find difficulty in getting.

The Simpson Store is complete in its stocks, and every price is reasonable.

### A Sale of Men's High-Class Business Suits

**280 High-Class Suits,** made from West of England worsteds, English and Scotch tweeds, in browns, greys, greens, and blue greys, in fancy stripe patterns, are cut single-breasted style, with three buttons. Trousers are cut in good style, with belt and side straps, and many have cuff bottoms. The very finest mohair linings and tailoring. Regular selling price \$16.50, \$18, and \$20. Wednesday . . . . . **\$10.95**

**A SPECIAL SHOWING OF BOYS' WASH SUITS.**

**Boys' Tan and White Stripe English Print Suits,** in the Russian military style, buttoning up side to shoulder; small stand collar and opening trimmed with plain tan and white braid, self belt. Bloomer pants, with elastic bottoms. Sizes 2 to 5 years . . . **\$1.00**

**Boys' Eton Russian Suit,** made from a strong, durable English repp, in a white with a blue hairline stripe; white tie and Eton collar, piped with self goods, pleated sleeves, belt. Bloomer pants. Sizes 2 to 6 years . . . . . **\$1.25**

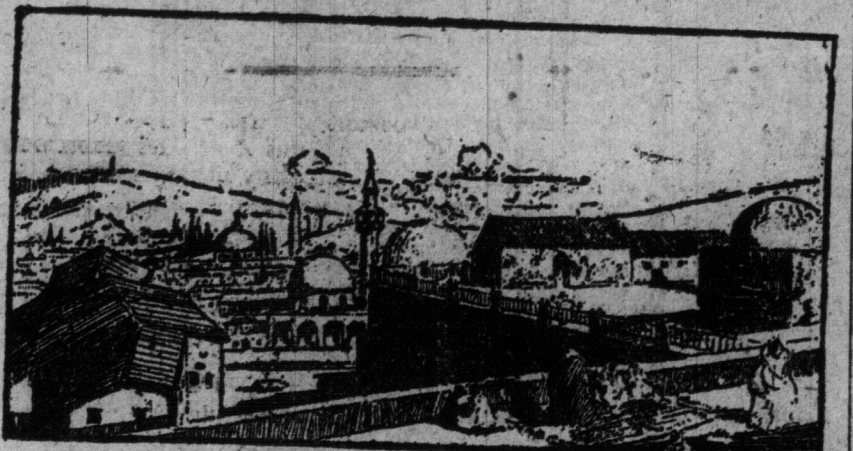
**Russian Sailor Suit,** in a two-tone tan striped print, full-size collar, trimmed with dark tan and white braid, white shield, with ornament, flowing end tie. Bloomer pants. Sizes 2½ to 6 years. Wednesday . . . . . **\$1.50**

**Exceptionally Good Value—Single-Breasted Russian Sailor Suit,** in a tan and blue and white stripe galatea, full sailor collar, white duck shield, with red anchor, belt at waist, bloomer pants. Sizes 2½ to 6 years . . . . . **\$2.00**

### Silk and Stiff Hats

**Men's Silk Hats,** new English and American shapes, slight bell crown, with tan or medium felt brims; well finished, easy fitting, and light in weight. Special values at . . . **\$4.50 and \$5.00**

**Men's Square Crown Stiff Hats,** large, medium, or small proportions, especially suitable for elderly men, fine grade English fur felt, black only. Wednesday . . . . . **\$2.00**



### EXQUISITE RUGS Oriental and Domestic

An important special sale of High-class Oriental as well as Imported and Domestic Axminster and Wilton Rugs offers an exceptional opportunity at this time, when many are contemplating the purchase of one or more rugs for the spring reupholstering. The specially-priced ones comprise fine seamless and seamed Imported and Domestic Axminster, English, and Domestic Wiltons and a number of choice, genuine, hand-made Persian and Turkish examples, that are marked at very big reductions from the regular prices. These values cannot be duplicated, as the carpets are all of the finest qualities. A few selected to illustrate the extraordinary reductions. Seamless Scotch Axminster Squares:

9x12, self-green and self-tan regularly \$33.00. Special, **\$21.95**

9x12, handsome Oriental designs, in green, blue, and red grounds. Regularly \$45.00. Special . . . . . **\$29.75**

10x12, beautiful green and tan chintz. Regularly \$22.00. Special . . . . . **\$15.75**

9x10.6, rich Oriental, in green and blue, beautiful blue, pink, and green chintz. Regularly \$40.00. Special . . . . . **\$27.50**

**Fine Quality Seamed Axminster Squares,** imported and domestic.

Beautiful plain centre with Oriental borders, in brown and green, 12x9. Regularly \$45.00. Special . . . . . **\$29.75**

Tan trelle centre, with medallion design for dining-room. 12x9. Regularly \$45.00. Special . . . . . **\$29.75**

Tan trelle centre, with illuminated chintz border, 9x9, regularly \$20.00. Special 9x12, regularly \$35.00, \$17.75; 9x10.6, regularly \$23.50, \$16.75; 11x12, regularly \$32.50, \$24.50.

Choice English and Domestic Wilton Squares, Oriental, self-color effects and conventional:

8 1/2 x 10.6, regularly \$24.15. Special . . . . . **\$17.50**

9 x 12.6, regularly \$28.50. Special . . . . . **\$21.25**

9 x 12, regularly \$27.50 and \$23.50. Special . . . . . **\$19.75 and \$22.25**

11x12, regularly \$40.00 and \$47.50. Special . . . . . **\$29.75 and \$32.25**

11x13.6, regularly \$47.50 and \$55.00. Special . . . . . **\$32.25 and \$34.25**

Genuine Persian and Turkish Hand-made Rugs, an assortment of beautiful rugs, in various colors, for many different rooms. Phenomenal bargains, a few samples quoted:

15x20.10, regularly \$200.00. Special . . . . . **\$97.50**

13x20.10.6, regularly \$137.50. Special . . . . . **\$65.00**

18x21.1, regularly \$92.50. Special . . . . . **\$45.00**

12x13.6, regularly \$37.50. Special . . . . . **\$19.75**

10x12.6, regularly \$37.50. Special . . . . . **\$19.75**

16x20.8, regularly \$97.50. Special . . . . . **\$48.00**

Some bargains in Real Hand-made India Rugs, for dens, dining-rooms, halls, etc.:

8.5x5.1 . . . . . \$10.95

8.5x5.1 . . . . . \$17.75

8.5x5.1 . . . . . \$21.00

10.5x5.6 . . . . . \$33.55

11.1x5.6 . . . . . \$39.95

15.9x5.6 . . . . . \$57.25

15.9x5.6 . . . . . \$45.00

This in LUNCH ROOM  
Wednesday Afternoon 3 to 5.30



### Sale of Lace Blouses \$2.95

300 Imported Lace Blouses, guipure, Cluny, and shadow embroidery laces, made in new and attractive styles, low or high neck, exceptionally pretty sleeves, kimono or set-in; all are trimmed with fine lace insertion to match waist, and dainty shades of mesaline silk piping; all sizes in the collection; ecru, white, and black. Regularly \$5, \$6.50, \$7, and \$8. Wednesday . . . . . **\$2.95**

### Spring Drapery and Curtains

Now that house-cleaning is in full swing, and many new utilities, such as Curtains, Drapes, Poles, and Awning Shades, are required to brighten up the outside appearance or complete the decoration of rooms; it would be advisable to bear in mind that special Daily Bargains (not advertised) are offered in Simpson's Drapery Department, Fourth Floor. Below we quote a few lines for comparison:

**LACE CURTAINS.**  
2,000 pairs Nottingham Lace Curtains, in good effects and lacy patterns, white only. 3½ yards long. Very special. Wednesday, pair . . . . . **98c**

1,600 pairs Nottingham Lace Curtains, many designs, splendid mesh, and durable edges; 50 inches wide, 3¼ yards long; serviceable bedroom curtain. Special Wednesday at, pair . . . . . **\$1.40**

200 pairs Cable Net Curtains, in white only. These curtains noted for strength and effective patterns, usual large size. Very special Wednesday at, pair . . . . . **\$1.38**

**EGYPTIAN CLOTH, 75c.**  
English Egyptian Cloth, in greens and browns only, 50 inches wide, closely-woven fabric, pebble finish, perfectly reversible, makes an excellent portiere or curtain material. Unusual price \$1.00. Special Wednesday, yard . . . . . **75c**

**SIMILE REPP, 85c.**  
Heavy Plain Portiere Fabric, in Ottoman cord weave, good, rich shade of brown and green only. Full drapery width. Regular value \$1.25. Special Wednesday at, yard . . . . . **85c**

**SHADES, 25c.**  
Plain Oil Opaque Shades, in cream and green tones, 26 inches by 70 inches, mounted on good rollers; just what is required for summer home or cottage use. Wednesday special. . . . . **25c**

**CURTAIN POLES, 24c.**  
Wood Curtain Poles, with rings, and brackets to match, in oak mahogany, or walnut finish, five feet long. Worth \$30 complete. Special Wednesday at, pair . . . . . **24c**

**BAMBOO SHADES.**  
Bamboo Shades, evenly-split natural finish only, good sun protector, for porches and verandas, allowing perfect ventilation. 4 feet wide by 8 feet long . . . . . **75c**  
5 feet wide by 8 feet long . . . . . **95c**  
6 feet wide by 8 feet long . . . . . **\$1.15**  
7 feet wide by 8 feet long . . . . . **\$1.35**  
10 feet wide by 8 feet long . . . . . **\$1.75**

### GENUINE FRENCH BALBRIGGAN

### Underwear for Men at 50 Cents

Natural shade only. These are considered the best garment for summer wear, fine and soft yarns, beautifully finished, made with long or short sleeves, and ankle or knee length drawers, sizes 34 to 48. Each garment, 50c

"Body Guard" Underwear for men in pure wool, which is guaranteed to give satisfaction, and warranted unshrinkable; the yarns used in its manufacture are fine and soft, and perfectly sanitary. Give this garment a trial. Price, per garment . . . . . **\$1.00**

### MEN'S NIGHTROBE SPECIAL

We have procured a great quantity of genuine English Flannelette, and had it made up into Men's Nightrobes, with large, roomy body, which is full length. They have a pocket and turn-down collar, a yoke, and strongly sewn overlapped seams. Pink or blue shades. These would be good value at 75c. All sizes, 15 to 19. Wednesday . . . . . **50c**

### Two Boot Specials for 8 o'clock Selling

**WOMEN'S BOOTS, \$1.95.**  
200 pairs Women's Boots, Blucher, button, and Balmora styles, in patent coll, light kid, and gunmetal leathers; medium and low heels; flexible McKay and hand-turned soles; sizes 2½ to 7. Regular \$1.95 and \$2.50. Wednesday, 8 o'clock . . . . . **\$1.50**

**Men's Boots, \$1.95.**  
1,000 pairs Men's Boots, Blucher style, calf, dogskin kid, and gunmetal leathers; short and medium vamp; single and double soles; dull matt calf and self tops; all new spring styles; sizes 6 to 11. Regularly \$2.00. Wednesday, 8 o'clock . . . . . **\$1.50**

### Horse Show Millinery

Great preparations are being made to place in our show cases, during this week, starting to-morrow, the best selection of Exclusive and High-class Millinery that we have ever shown. Beautiful creations, in the finest Milans, Tagels, and Leghorns, with rich lace, osprey, and ostrich effects, arranged in most captivating styles by our best designers. Your presence is invited.

### Paris Models

A wonderful collection of Summer Gowns, which have just arrived from Paris, which have, every one, distinction and unique style. There are at least 150 models of all sizes, all styles, and many prices. It would be hard to find anyone who could not be suited in this department.

Lace and Lingerie Summer Gowns, hand embroidered or plain, each one different from the others. Ten Dollars and upwards.

Some charming Mull Muslin Gowns, in pink, blue, and mauve, trimmed with quantities of Valenciennes lace. at \$40.00, and countless others.

### Seasonable Apparel for Women & Children

**For Little Girls,** new spring Coat of natural color cotton Tussock, satin lined, with short hand embroidery in sky blue silk, silk braid on collar and cuffs. Double-breasted, pearl buttons. Sizes 2 to 6 years. Wednesday, each . . . **3.00**

**For Girls' School Wear,** dresses of fine plain chambray or fancy gingham, several pretty designs, tastefully trimmed, all the wanted colors. Sizes 8 to 14 years. Wednesday, each . . . **1.25**

**For Women,** Swiss ribbed white linen three vests, beautiful rose supporters, finest full crisp quality, low neck, no sleeves, crocheted edge, silk tapes, sizes 12 to 40 bust. Regular price 35c each. Wednesday, each . . . **25c**

**For Women,** fine ribbed white cotton Drawers, umbrella style, wide lace trim, both styles, sizes 22 to 38. Wednesday, a pair . . . **20c**

**FOR WOMEN—D, and A, Corsets,** a beautiful model, in strong white coutil, medium low bust, very long, unboned skirt; 3 pairs lace supporters, finest russetproof boning; 4 wide, side steels, deep lace and ribbon trim; sizes 12 to 36 inches. Wednesday, almost half-price, pair . . . . . **\$1.00**

**FOR WOMEN—Pussy Nightdresses,** of nainsook, a pretty plimpy style, sleeves, embroidery medallion yoke, run with silk ribbon; lace on sleeves; sizes 22 to 42 bust. Wednesday, each . . . **85c**

**FOR INFANTS—Health Brain Vests,** in white merino, wool and cotton mixtures, Rubens or Brownie styles; sizes 3, 6, 9 to 18 months. Wednesday, each . . . . . **25c**

**FOR CHILDREN—Dressing Gowns or Bathrobes,** fine printed velour flannelette, pink or blue fancy patterns, bound edges, heavy cord girdle; sizes 4 to 16 years. Regular prices \$1.50 and \$1.75 each. Wednesday, each . . . . . **75c**

**"Out Size" Petticoats**  
Black Mercerized Satin, finished and pin tucked flounce, with deep underpiece, \$1.25  
Imported Satin, black only, extra quality, deep flounce, trimmed with rows of pin tucking, also deep underpiece . . . . . **\$2.00**  
Imported Mooren, black only, tailored sectional pin tucked flounce, finished with velvet binding; lengths 36 to 42 . . . . . **\$2.00**

**Gingham House Dresses, \$1.25**  
House Dresses, of fine gingham, blue and grey stripes with white; square Dutch neck and front trimmed with bias self, three-quarter sleeves; sizes 34 to 44. Wednesday . . . . . **\$1.25**

**Black, Colored, and Japanese Silks**  
Black Duchess Pailette, regularly \$1.25. 38 inches wide, for 97c per yard.  
A choice quality, in a deep rich black; made by a leading Swiss maker, and grand value at . . . . . **97c**

**BLACK AND IVORY JAPANESE SILK.**  
Lyons dyed, with taffeta or natural finish; splendid-looking summer silks; 36 inches wide. For Wednesday, per yard . . . **46c**

**A BARGAIN IN WIDE-WIDTH COLORED SILKS.**  
Regularly \$1.25 to \$1.50. Duchess Pailette: For 88c Per Yard.

The balance of broken lines, in myrtle, moss, amethyst, mauve, Burgundy, sky marine, blue, and rose, 46 inches wide, with a limited quantity in 36-inch black and Ivory Satin Pailette clearing at the same price. Per yard . . . . . **83c**

### Dress Goods

**For Summer**  
There are great differences in Dress Goods. Some are apparently much alike; looks do not count for everything. Some cloths have the approved appearance, but do not prove themselves in actual wear. Our guarantee makes certain the wear and satisfaction that you are entitled to, if you purchase from our splendid stock.

English Mohair Lustres, in a full range of new shades, in quantities from 25c to \$1.00 per yard.

Silk-Striped Voiles, dainty light-weight fabrics, in beautiful designs and new colorings.

Silk-Striped French Delaines and Taffetas, pure-wool qualities, best French dye and finish.

Silk and Wool Glorias, in a beautiful range of the season's newest shadings, light in weight and cool to wear, uncrushable and permanent dye and finish.

### Wash Goods

A big new consignment of Beautiful Bordered Organzae, silky patterns, in every conceivable color and combination. Special value . . . . . **25c**

Healy Battiste—This celebrated printed material is as good as ever, and we have the biggest range of colors and designs ever shown. Spots, figured sprays, buds, and conventional designs . . . . . **15c**

Scotch and English Ginghams, all the staple checks and many novelties, fast colors and noted for hard-wearing qualities. Special, 38 inches, 12/64 81 inches, 15c.

New Ranges of White Mercerized Broadcloth Vestings, spots and figures. These are our well-known makes, that look as well after repeated washings as when new. 15c, 20c, and 25c.

French Voiles, allover designs, some of the most exquisite patterns ever produced, and all the dainty shades the French are so noted for . . . . . **40c and 35c**

Extra Special—38-inch Zurich Broadcloth Washing Silk, pink, sky, mauve, black, tan, cream, etc. Regularly 40c . . . . . **25c**  
No phone or mail orders for this item.

### Royal Doulton China

1,000 pieces Cake Plates, Rail Plates, Soup, Dinner Platters, etc., in a large assortment of scenic and floral decorations. Wednesday, 26c

75 dozen Table Tumblers, in fine blown glass, with etched band designs. Wednesday, dozen . . . . . **98c**

30 English Semi-Porcelain Dinner Sets, in Maddocks' semi-vitreous ware, the set contains 97 pieces, all well designed, with fine conventional border decoration, and bright gold finish. Regularly \$16.50. Wednesday . . . . . **\$9.98**

### Hand Mirrors Half-Price

**TRAVELER'S SAMPLES OF HAND MIRRORS.**  
We have 100 only Simple Hand Mirrors, in all sizes and stripes. They are ebony finished, and have good quality of beveled glass. Regular values from 75c to \$2. All at **HALF-PRICE.**  
(On sale Brush Counter)

### Groceries

2,000 stone Fresh Rolled Oats, per stone . . . . . **45c**  
Choice Side Bacon, Peameal, half or whole, per lb. . . . . **18c**  
Finest Canned Corn, 3 tins . . . **25c**  
Canned Peas, per tin . . . . . **15c**  
Fancy Japan Rice, 4 lbs . . . . . **25c**  
Swiss Food Breakfast Cereals 3 packages . . . . . **25c**  
Domestic Kipper Herring, per tin . . . . . **10c**  
Choice Potatoes, 3 lbs . . . . . **25c**  
Canned Lombard Tomatoes, per tin . **15c**  
Pure White Clover Honey, 1 lb. tin . **75c**  
Teller's Cream Soda Biscuits, 3-lb. tin . . . . . **25c**  
St. Charles Milk, per tin . . . . . **10c**  
One Car California Apples, Oranges, good size, per box . . . . . **25c**  
Prepared Mustard, Balaclava Brand, reg. 16c, 3 jars . . . . . **25c**  
Fresh Roasted Coffee, Per lb. . . . . **25c**  
500 lb. Fresh Roasted Coffee, in the bean ground, pure or with chicory. Wednesday, per lb. . . . . **55c**

### A House-Cleaning Sale in Basement

4,000 House Brooms have just arrived, in time for spring house-cleaning. On Wednesday we will sell from one to a half-dozen to customers who come early. This splendid assortment of the best quality brooms, 50c, 65c, and 65c, four and five strings, sewn and standard grades. At, each . . . . . **80c**

1,200 Garden Spades, D handle, good quality steel, a chance to buy a spade for garden, and get the quality for which you ordinarily pay 75c. Wednesday . . . . . **67c**

## The SIMPSON Company Limited

Lack  
Eviden  
Fleet  
Show  
Prop  
Fauc  
Not  
Comp  
WASH  
insing  
arch  
wide  
locku  
tribut  
with  
The  
vestig  
stn. T  
lobout  
Godfr  
surer  
the rec  
adged  
his obs  
probab  
the shi  
and the  
this also  
and as a  
of the  
been det  
Helen  
had equ  
It was  
for bei  
with the  
had ask  
and wro  
them. O  
have ser  
Lack  
Major  
terms t  
on board  
when the  
not enou  
undertak  
ing and H  
he said, i  
the time  
tho it wa  
drills ev  
At the m  
Plitman  
the only  
don't com  
dock's ord  
survivors  
passenger  
It was  
senger w  
witnesse  
Frederic  
out man  
man on th  
did five  
sea and v  
prior to g  
in the cro  
collision.  
"Mr. Mu  
there. Fle  
said he r  
sailor Le  
crow's ne  
him to kee  
"Did you  
"Yes, sir  
I reported  
"What d  
foebers?"  
"I sound  
phoned to  
my iceber  
"I feel as  
to his reg  
laid.  
Fleet ref  
the collis  
"Was it  
fore the  
Smith in e  
"I don't  
obdurately  
"All we  
ring the b  
dancer we  
"I though  
but it didn  
saw it." Fift  
"How las  
"But it go  
and when  
set above  
"After g  
mal was t  
"No; she  
struck the  
to port  
noticed it"  
"Where  
ship?"  
"On the  
from the  
"Fleet" s  
came ther  
a sharp g  
Continu