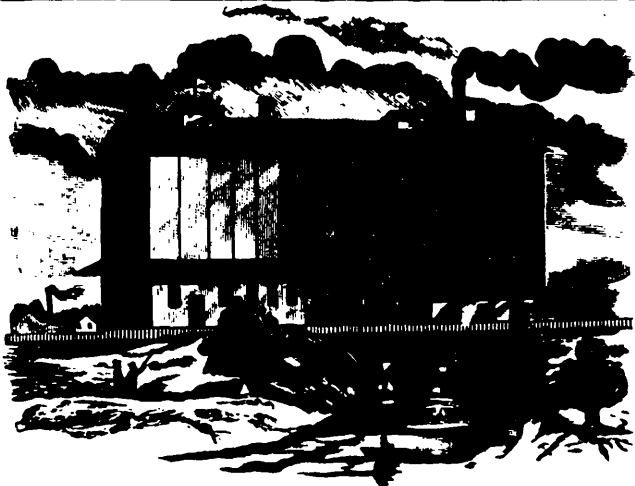




BRANDS:  
 STAR : LINCOLN  
 CROWN  
 RED CROSS  
 CLYDE MILLS  
 SPARKLING RIVER



Unsurpassed for Uniform Quality



GREENFIELD MILLS + AYR. ONT.  
**D. GOLDIE, Prop.**  
 Daily Capacity 500 Barrels



"BUILD TO-DAY THEN,  
 STRONG AND SURE,  
 WITH A FIRM AND  
 AMPLE BASE."  
 — Longfellow.

**DO YOU?**  
 WISH THUS TO BUILD  
 an advertisement  
 in the  
 CONTRACT-  
 RECORD.  
 TORONTO  
 will bring you  
 readers from the  
 best contractors.

HEADQUARTERS  
 FOR  
**TRUSSES**  
 FOR  
**RUPTURE**

INSTRUMENTS FOR  
 CLUB FEET,  
 WHITE SWELLING,  
 SPINAL CURVATURE,  
 ALL DEFORMITIES

CHAS CLUTHE  
 OPPOSITE NO. 41 HOUSE  
 TORONTO, CAN. 134 KING ST. W.  
 ESTABLISHED 1871

ROBIN & SADLER  
*Leather Belting*  
 SPECIALTIES  
 WATERPROOF BELTING

Send for sample of our new SAWMILL BELT'S



- Royal Mills, capacity 1,000 bbls.
- City Mills, 1,100 bbls.
- Glensora Mills, 1,000 bbls.
- Goderich Mills, 1,000 bbls.
- Seaforth Mills 800 bbls.
- Winnipeg Mills, 1,000 bbls.

DAILY CAPACITY  
**7,100 BBLs.**

HIGHEST QUALITY

**Hungarian Patents**  
 AND  
**Strong Bakers'**

FIRST PRIZE, DIPLOMA AND  
 GOLD MEDAL, EXHIBITION,  
 JAMAICA : : : :

← FLOUR

**W. W. OGILVIE**  
 PROPRIETOR

HEAD OFFICE:  
**MONTREAL, QUEB.**