

A. B. C. & A. 1 Codes Used.

Telegraphic Address, Latch, Haymills

# LATCH & BATCHELOR, L't'd.

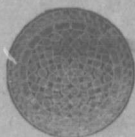
AMALGAMATED WITH  
**WEBSTER & HORSFALL,**  
(ESTABLISHED 1730)

Works : HAYMILLS, BIRMINGHAM, ENGLAND.  
AGENT: H. M. WYLDE, P O Box, 529 HALIFAX N. S.

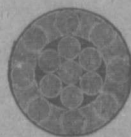
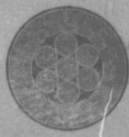
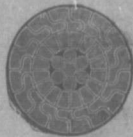
Patentees and Manufacturers of

## Locked Coil and Flattened Strand WIRE ROPES.

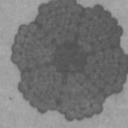
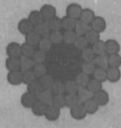
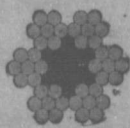
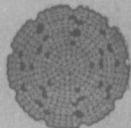
Manufacturers of all Kinds of WIRE ROPES for  
Mines, Tramways, Aerial Ropeways, Suspension  
Bridges, Cranes, Elevators, Transmission of  
Power, Steam Ploughing and General  
Engineering Purposes.



Locked Coil Winding Cable,



Locked Coil Aerial Cable or Colliery Guide.



Lang's Lay or ordinary Patent Flattened Strand Winding or Hauling. Patent Flattened Strand, (non spinning)

**DRAWERS OF** all Sections **STEEL-WIRE.**  
HIGH CLASS  
for Ropes, Springs, Pianos, Needles, Fish-Hooks  
Binding Armatures and all other Purposes.