

REID-NEWFOUNDLAND CO.

Southern Shore Service!

Train to Renew's Daily except Sundays. Train from Renew's to Trepassey on Tuesdays, Thursdays and Saturdays, and returning Train leaves Trepassey on Mondays, Wednesdays and Fridays.

Dancing Pumps.



We've the best models in Dancing Pumps for both Men and Women. Pumps that are adapted for "doing" all the Modern Dances! We are showing some entirely new creations! Leathers of Patent Kid, or Dull Kid. Women's Pumps in Kid or Satin. Some styles are beautifully ornamented with bows or Rhinestones.

25c. to \$5.00.

PARKER & MONROE, LIMITED,
THE SHOE MEN.

NOTICE.



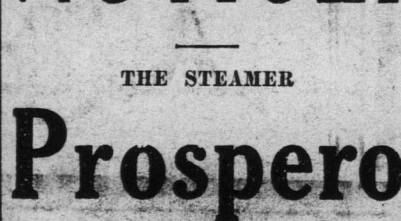
will leave the wharf of
Bowring Bros. Ltd.,
on
Wednesday, 28th July,
at 10 a.m.,

calling at the following places:
Cape Broyle, Ferryland, Fermanagh,
Trepassey, St. Mary's, Salmonier, Placentia, Marytown, Burin, St. Lawrence, Lamaline, Fortune, Grand Bank, Belleoram, St. Jacques, English Harbour West, Pass Island, Gaultois, Pushthrough, Richard's Harbor, Francois, Cape LaHune, Ramea, Burgeo, Rose Blanche, Channel, Bay of Islands and Bonne Bay.

Freight received until 6 p.m. Tuesday.
For freight or passage apply to the Coastal Office of

BOWRING BROTHERS, LTD.
Telephone 306.

NOTICE.



will leave the wharf of
Bowring Bros., Ltd.,
on
THURSDAY, 29th July,
at 2 p.m.

calling at the following places:
Bay de Verde, Old Perlican, Trinity, Catalina, Bonavista, King's Cove, Greenspond, Pool's Isld, Wesleyville, Seldom Come By, Fogo, Change Islands, Herring Neck, Twillingate, Moreton's Harbor, Exploits, Fortune Harbor, Leading Tickle, Pilley's Island, Little Bay Island, Little Bay, Nipper's Harbor, Tilt Cove, LaSalle, Paquet, Bale Verte, Coachman's Cove, Seal Cove, Bear Cove, Western Cove, Jackson's Arm, Harbor Deep, Englee, Conche, St. Anthony, Griguet, Quirpon, Battle Harbor.

Freight received until 6 p.m. on Wednesday.
For freight or passage apply to the Coastal Office of

Bowring Bros., Ltd.
Telephone 306.

Fresh Butter

Just received:
CHOICE
SEARSTON and CANADA
in small packages, now selling at the Very Lowest Prices.
JAS. R. KNIGHT.

Ladies' Underwear

and Hose,
BEST VALUES OBTAINABLE
ARE AT
BLAIR'S.
AND ALSO THE LARGEST VARIETY.

Ladies' Colored Real Lisle Hose. Regular 40c., only 29c. pair.
Ladies' Black Half Silk Hose only 30c. and 35c. pair.
Ladies' Silky Finish Black & Tan Thread Hose at 18c. and 20c. pair.
Ladies' Silk Hose in various colors; have had a big sale at 75c. pair.
Ladies' Black Plain Cashmere Hose—We have old values in stock still from 35c. pair upwards; but believe me you are going to have trouble getting these later, and will pay a lot more for them.
Ladies' Black Ribbed Cashmere Hose—We have a full selection of in old values.

Another thing very difficult to get now, we have, at present, quite a stock of

Ladies' Lisle Gloves,

Both long and short; colors mostly Whites, Blacks, Beavers and Greys, at only 20c. pair.

Ladies' White Cotton Vests—Startling values at 10c. upwards.

HENRY BLAIR

jly26.eod.tf

Although you may be satisfied with the Tea you are using, we feel absolutely certain that

Armada Tea

will give you much greater satisfaction.

Order a package to-day.
For sale everywhere, at
60c. per lb.

AUGUST PATTERNS

NOW ON SALE

The women of Newfoundland are unanimous in praise of the Pictorial Review Patterns. Perfect fit assured.
N. B.—Outfits please remember 17c. must accompany order for pattern.

CHARLES HUTTON.

FANCY DEPARTMENT.

READY MIXED PAINTS!



SHERWIN-WILLIAMS ROOF AND BRIDGE PAINT
is an economical paint for use on roofs, bridges, barns, fences, etc.
It is durable and works freely and easily under the brush. Has good covering capacity. Made in strong red and brown colors.

English Paints, B. S. Co. Blue Label, in 1 lb., pts., qts., ½ gals. and gals.
English Paint, B. S. Co. White Label, in ½ pts., qts., ½ gals. and gals.
Sherwin-Williams Paints in qts., ½ gals. and gals.
Stains, Varnishes, Enamels, Cabinet Shingle Stain, Roof and Bridge Paints, Raw and Boiled Linseed Oil, Turpentine and Liptine.
A large assortment of Sash, Paint, Wall and Kalsomine Brushes to select from. Color cards and prices on application.

Martin Hardware Comp'y, Ltd.

WHOLESALE & RETAIL.

O'Sullivan's Heels

—AND—

O'SULLIVAN'S

Rubber Cement

—ARE—

The Strongest and Best.

july20.eod.tf

Gasolene

On Spot and to Arrive.

Prices are

Away Down.

T. A. MACNAB & COMPANY,

Telephone 444. P. O. Box 785.

EIGHT PAGES TO-DAY.
WEATHER FORECAST.

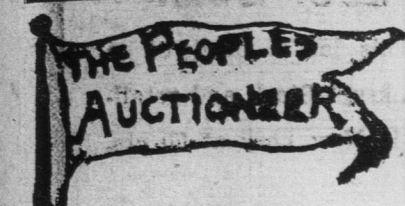
TORONTO, Midnight. —Light to moderate winds, mostly fair with moderate temperature.
ROPER'S, Noon. —Bar. 29.50; ther. 70.

VOLUME XXXVII.

REID

S. S. G.
of the 8.45
and Port a

Auction Sales!



AUCTION.

At the
Studio of Mr. James Vey,
Bank of Montreal Building, on
Thursday Next, 29th inst.
at 10.30 a.m.

All the Stock in Trade,
consisting of High Grade Cameras,
Framing and Scenery Screens, first
class Magic Lantern, together with a
big selection of Slides showing views
of all parts of the world. Sale will
be made as a going concern, in lots.

P. C. O'DRISCOLL,
Auctioneer

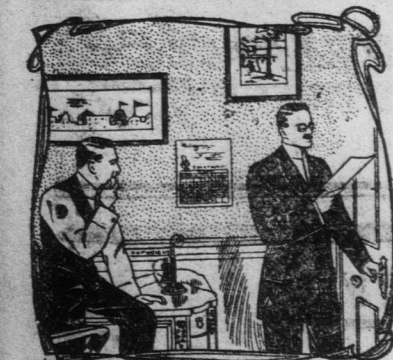
AUCTION.

At the British Hall, on Friday next,
30th inst., at 10.30 a.m., a quantity of
Household Furniture and Effects, re-
moved for convenience of sale. Par-
ties desirous of sending articles to be
sold will please do so on Thursday.
No goods received before that date
and all must be removed from the Hall
on Friday afternoon whether sold or
not. Send list of articles to under-
signed not later than Thursday noon.
Nothing delivered without payment.

P. C. O'DRISCOLL,
Auctioneer

FOR SALE.

8 Bungalow Lots,
situate between Waterford
Hall and the residence of
Hon. Donald Morrison. These
lots are in the most pictur-
esque section of Waterford
Valley, and will be sold
cheap to prospective Bungal-
low builders.
Apply to
Fred. J. Roil & Co.,
REAL ESTATE.
Smallwood Building,
Duckworth Street.



THE WHOLE STORY

of what our "Safeguard" method of
Filing and Finding will do for you is
told in a nutshell. It will keep you
out of many a hole by ensuring im-
mediate handling of every paper of your
records when reference to them is dis-
cussive—and loss of them is disas-
trous.

The Globe-Wernicke Co.
PERCIE JOHNSON,
Agent.

CARD!

During my absence from New-
foundland my practice will be
attended to by Mr. Jas. P.
Blackwood, Solicitor, Temple
Building, or Mr. S. J. Foote, Soli-
citor, Commercial Chambers
as suits the convenience of my
clients.

J. A. W. W. McNEILY,
Solicitor

Temple Building,
Duckworth Street,
St. John's. july21.m.w.t.