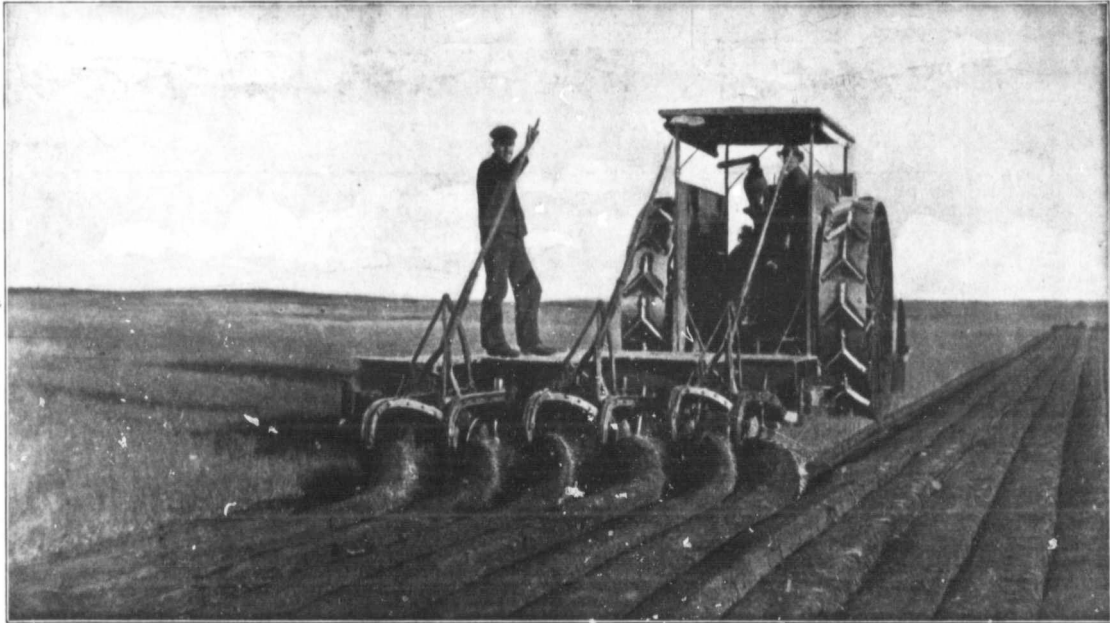


John Deere Engine Gang

FOR PERFECT WORK



MORE JOHN DEERE ENGINE GANGS SOLD IN WESTERN CANADA THAN ANY COMPETITIVE MAKE

4, 6, 8, 10, 12 or 14 BOTTOMS

Labor most advantageously employed is the most productive.

The two men operating the engine plowing outfit shown here, will do from fifty to one hundred per cent. more work than six men and teams operating single bottom plows.

Therefore the profit on their labor is greater.

Or, to put it another way, the resulting crop costs less and is consequently more profitable.

This principle of the economical use of labor is one of the essentials of profitable farming.

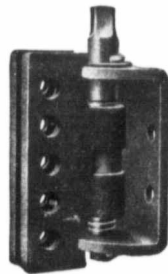
John Deere Engine Plows are built to operate most economically.

And to do the best work.

Here are a few important features.

Indestructible bridge-like steel frame, carried on three easy running wheels and covered with perfectly level platform. Plows

This is the Screw Clevis.
Found only on John Deere
Engine Plows.



Gives the Plows an Absolutely Accurate Adjustment.

attached to frame in pairs, each pair being operated by a single lever. One man can operate a John Deere Engine Plow, regardless of size. Each beam point is attached to a screw clevis, so plows can be given exactly the right adjustment.

A gauge wheel runs between each pair of bottoms making it possible to use rolling coulters in the right way. Beams carry stubble, turf and stubble, or breaker bottoms. And John Deere Bottoms have never been equalled for quality of work and light draft.

John Deere engine plows have the bottoms attached to frame in pairs. This ensures steady running, best work, easiest handling.

We have just published a new book which is the best thing ever put out on engine plows. It is FREE on request.

Ask for Package No. 50

JOHN DEERE PLOW COMPANY LIMITED

CALGARY

REGINA

WINNIPEG

EDMONTON

SASKATOON