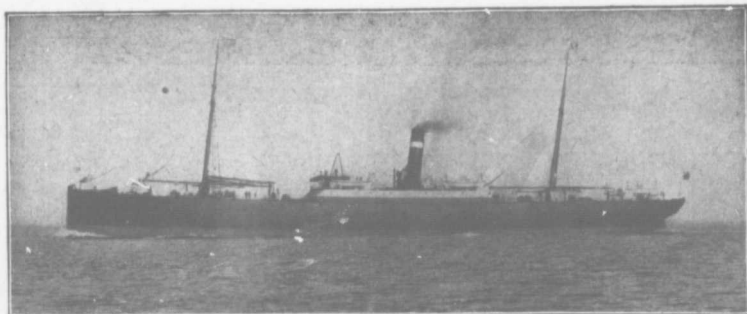


REFORD AGENCIES



S.S. TRITONIA, 5,000 TONS.

DONALDSON LINE

GLASGOW SERVICE.

WEEKLY

FORTNIGHTLY

From MONTREAL & From ST. JOHN, N.B.

During the Summer.

During the Winter.

S.S. Alcides, 3,500 Tons.	S.S. Keemun, 3,500 Tons.	S.S. Kastalia, (cold storage) 6,000 Tons
" Concordia, 2,600 "	" Amarynthia, 4,250 "	" Orthia, - - - 6,000 "
" Indrani, 4,750 "	" Hestia, 4,750 "	" Tritonia, - - - 5,000 "

AGENTS:

DONALDSON BROS., Glasgow, Scot.

SCHOFIELD & CO. St. John, N.B.

THOMSON LINE

WEEKLY LONDON SERVICE.

From MONTREAL & From PORTLAND, Me.

During the Summer.

During the Winter.

Sailings also for Newcastle, Leith, Dundee and Aberdeen as cargo offers.

S.S. Avlona, 2,250 Tons	S.S. Escalona, - 2,250 Tons.	S.S. Iona, cold storage, 4,500 Tons
" Bellona, 3,500 "	" Fremona, - 3,750 "	" Jacona, - - - 3,000 "
" Cervona, 5,500 "	" Geron, cold storage, 4,000 "	" Kildona, - - - 4,750 "
" Devona, 5,500 "	" Hurona, " 4,500 "	

AGENTS:

Cairns, Young & Noble, Newcastle-on-Tyne.

W. Thomson & Co., Leith.

A. Low, Son & Co., 27 Leadenhall St., London, E.C.

Wm. Thomson & Sons, Dundee.

FAVORITE BOATS FOR HORSES AND STOCK.

Special accommodation for Butter, Cheese and
Provisions in and out of Refrigerators.

Through Bills of Lading granted to or from all
points in Canada and the Western States.

For further information apply to

HENDERSON BROS., 176 to 180 Jackson St., CHICAGO.

J. D. RIDDELL, STRATFORD, Ont.

ALL RAILWAY AGENTS, or

THE ROBERT REFORD CO., Ltd., Montreal, Can. and Portland, Me.