

NOTICE

The Housing & Food Service Department will be offering its Evening Hot Meal Service in **The Sub Way** rather than in Central Academic Building, beginning in January of 1985.

A varied selection of menu items will be made available in The Sub Way as follows:

MONDAY THROUGH FRIDAY:

- 4:30 pm - 6:00 pm** a. Full Pasta Menu Daily
b. Evening Entree Item Available Daily
c. "Eat In" Pizza Service Daily
- 6:00 pm - 10:00 pm** "Eat In" Pizza Service Daily

Central Academic Building will continue to offer a la carte menu items on a Monday through Friday basis from 4:30 pm through 6:30 pm. (Friday until 6:00 pm)

We hope that you our customers, will enjoy these changes in our service to the University community.

Thank you

HOUSING & FOOD SERVICES • UNIVERSITY OF ALBERTA



TILDEN RENT-A-CAR

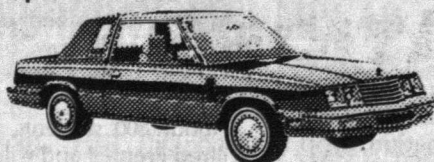
NEW UNIVERSITY LOCATION!
10911-82nd Ave (Whyte Ave.)

GRAND OPENING SPECIAL!

SPECIAL STUDENT RATES

FROM **18⁹⁵** PER DAY

- **SKIERIZED VEHICLES** available at no additional charge.
- **FREE PICKUP** to University
- Special **MAGICWAGON** rates available

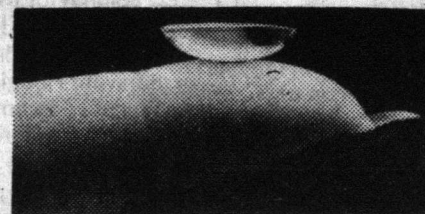


Tilden features cars by Chrysler

RESERVATIONS
432-0906

CAMPUS EYE CENTER

CONTACT LENS SALE



\$249⁰⁰
EXTENDED WEAR

Come in for a free evaluation on these first quality Extended Wear (EW) lenses. Wear them for one day to as long as 2 weeks at a time.

Bring us your prescription or ask us to arrange an eye examination and be expertly fitted by our qualified staff. You'll be surprised how quickly you can adapt to wearing soft contact lenses!

Offer Expires February 28th, 1985. A deposit will hold this offer until you have your eyes examined.
EYE EXAMINATIONS ARRANGED.

Campus Eye Center

11151-87 Avenue • 432-1372