

FEATURES PECULIAR TO THE MASSEY-TORONTO MOWER.

# The Massey-Toronto Mower is the most Popular, 30,692 having already been sold and being now in actual use.



OVER A STONE—KNIFE IN FULL MOTION.

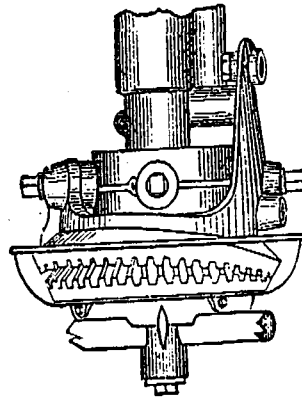
## SIMPLE.

The splendid driving mechanism used on the MASSEY-TORONTO Mower is one of the great inventions of this age. The wonderful differential gear which converts the rotary motion directly into reciprocal motion is a marvel to scientists in mechanics. Nothing more simple can be imagined, and at the same time never has been a more powerful driving mechanism discovered. Two cog wheels only constitute the device, and these but the size of a dinner plate.

## ELEVEN

of these cogs are in mesh at one time; other gears have three only.

We have yet to hear of a pair of these gears wearing out, though there are thousands of "Torontos" still in use which have now cut from eleven to thirteen seasons. What other machine can show anything like so good a record.



The Wonderful Differential Gear

draft rod attached to the main frame connects with a slitting device on the pole, thus connecting the horses directly with the cutter bar.

For steady, even, clean and powerful cutting no mowing machine has ever been designed that can equal the Massey-Toronto Mower. It is made exceptionally strong, and for rough land its rival is not known. It is often used on new land, where it would be most unsafe to venture with any other style of machine. It can even be used for underbrushing a swamp. The Massey-Toronto Mower is the only machine which practically admits of the cutter bar being raised to an upright position with the knife in full motion. No stopping required with the "Toronto" in passing obstacles.

## LIGHTEST DRAUGHT.

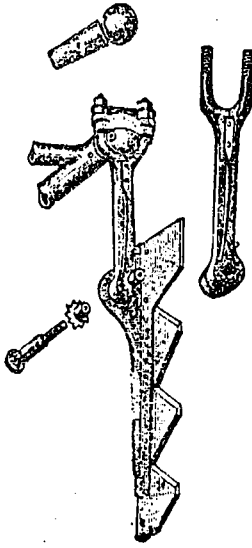


OVER A STUMP—KNIFE IN FULL MOTION.

## POWERFUL.

In every detail this celebrated mowing machine will be found to excel. The Pitman connection are ball and socket, and all slack from long wear can easily and quickly be taken up by simply turning a nut. No mow-er extant has such perfect adjustments to adopt it to all circumstances.

The "Toronto" is not drawn from the pole. A draft rod attached to the main frame connects with a slitting device on the pole, thus connecting the horses directly with the cutter bar.



Admirable Patented Pitman Connections.

road for miles without the slightest danger of injury to the machine, as when out of gear the only two cog wheels on it are thrown wide apart and the machine is like a sulk, and with the fine spring seat rides almost as easy. The Guards are of tested malleable iron, fitted with Ledger plates of steel made at our own works. The Sections are made of best English steel, specially imported by ourselves for this purpose. These, as well as the Ledger Plates, are made by ourselves. Our new Knife and Bar Department is thoroughly equipped and constitutes a large industry in itself. The Cutter Bar is of steel, and is thoroughly tested before being fitted with guards and knives. A lead wheel in the inside shoe carries the cutter bar over inequalities of the land.

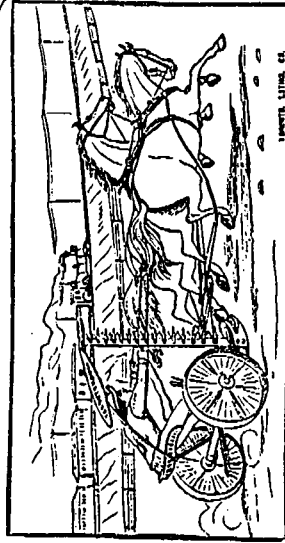
## EASIEST OPERATED.



PASSING A TREE—KNIFE IN FULL MOTION.

## DURABLE.

## ALWAYS READY.



LET HER GO! NO HARM CAN COME.

# 30,692 Massey-Toronto Mowers have already been sold and are in actual use, many of them having cut 13 seasons.

THE MASSEY MANUFACTURING CO., TORONTO, ONT., CANADA.