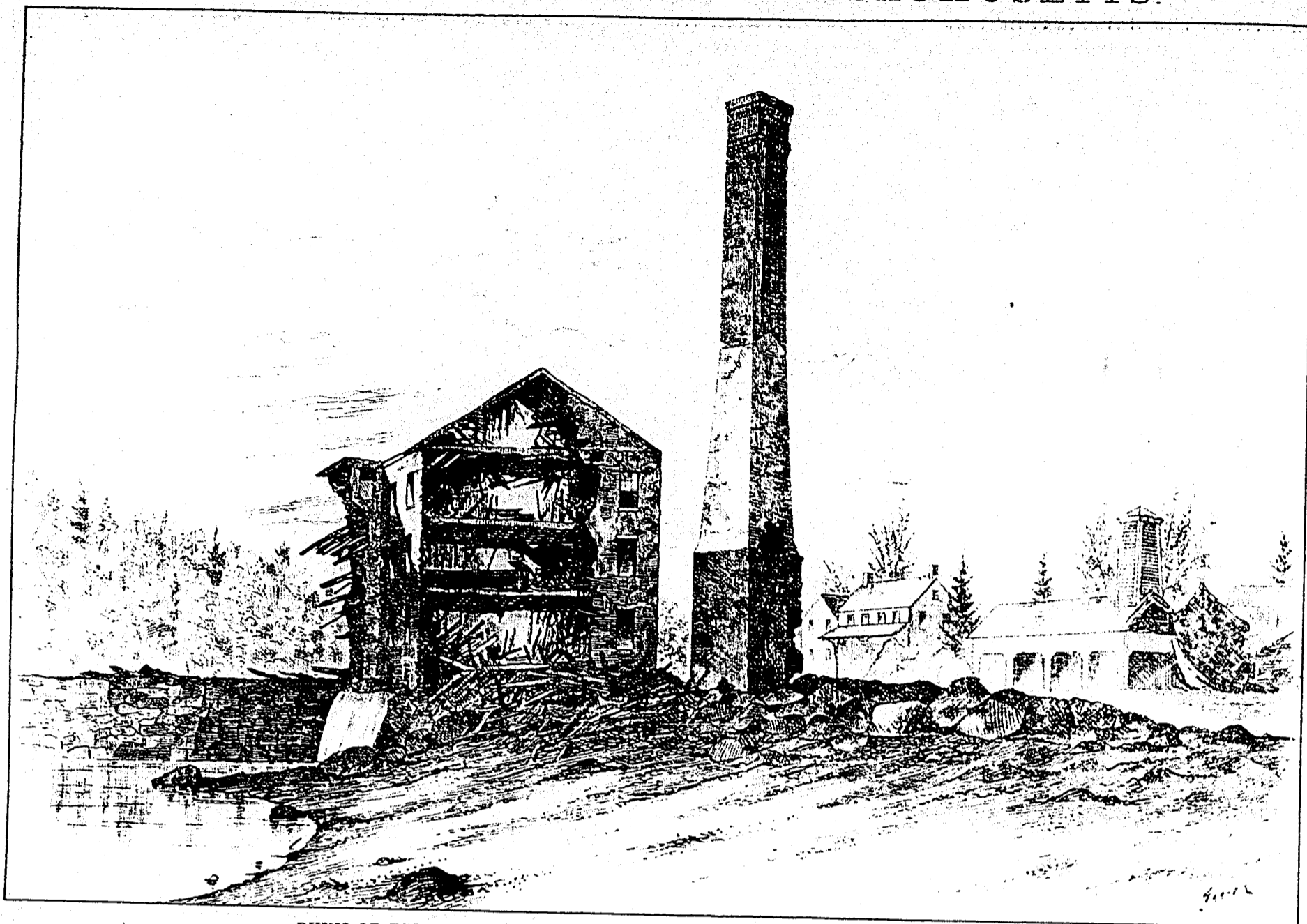
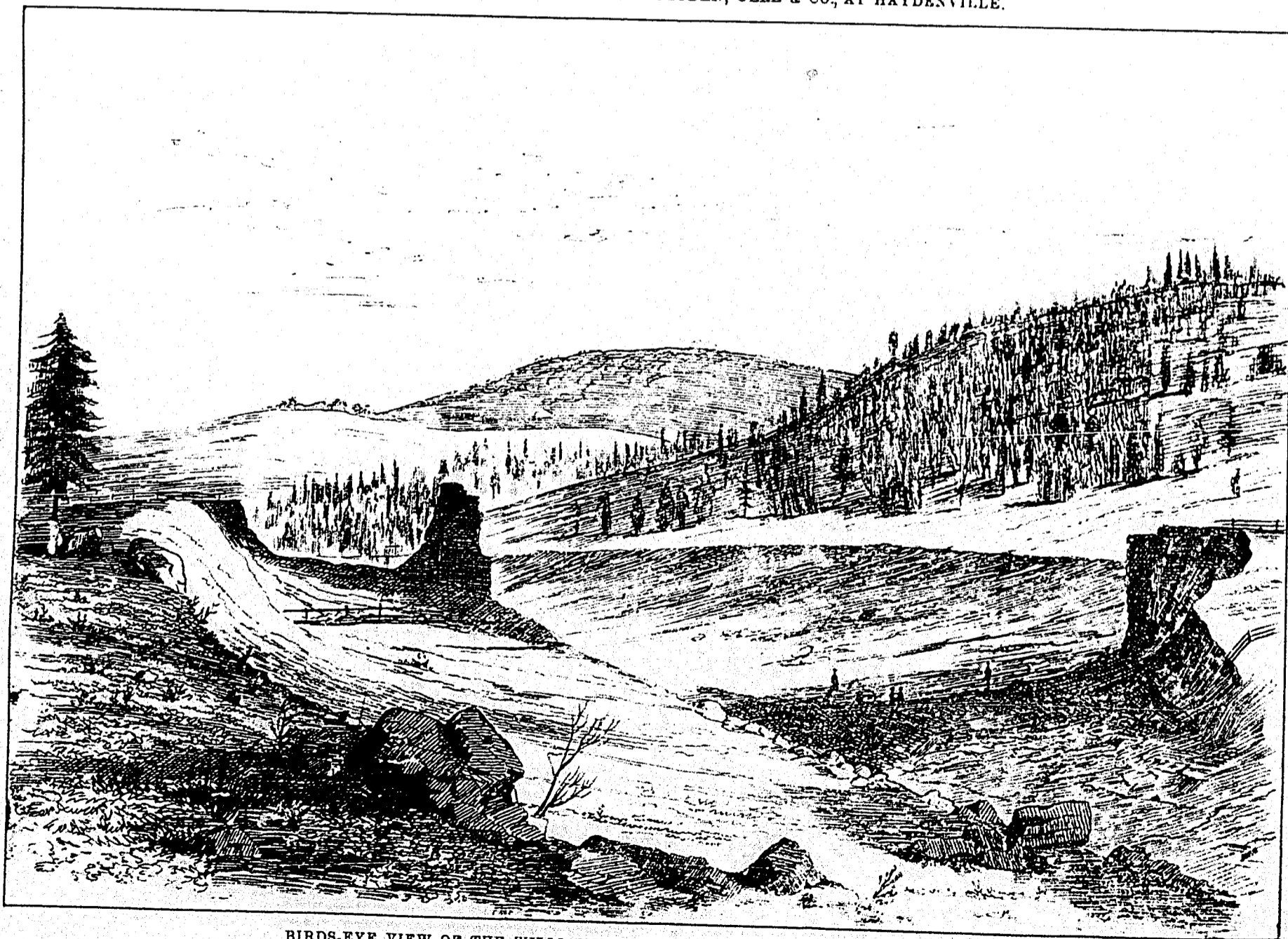


## THE GREAT FLOOD IN MASSACHUSETTS.



RUINS OF THE GREAT BRASSWORKS OF HAYDEN, GERE &amp; CO., AT HAYDENVILLE.



BIRDS-EYE VIEW OF THE WILLIAMSBURGH RESERVOIR, WITH THE RUINED DAM.