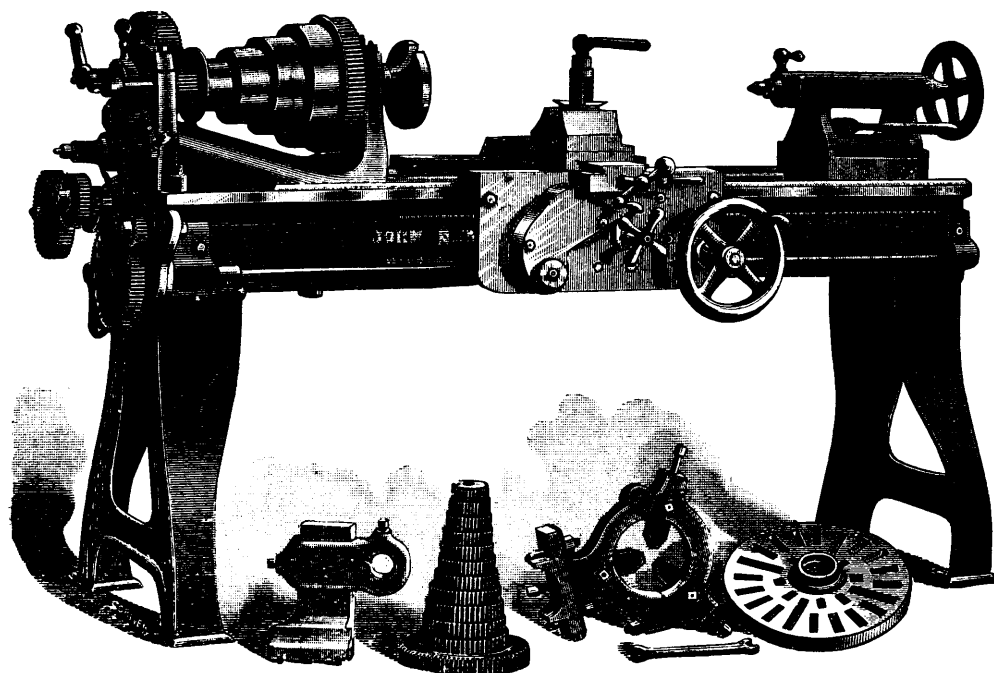


Canada Tool Works, **JOHN BERTRAM & SONS** DUNDAS, ONT.



16-in. LATHE.

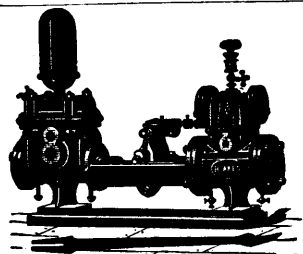
Manufacturers
of
Machinists' Tools
and
Woodworking Machinery.

LATHES,
PLANERS,
DRILLS,
MILLING
MACHINES,
PUNCHES,
SHEARS.
BOLT
CUTTERS
SLOTING
MACHINES,
MATCHERS
MOULDERS,
TENONERS
BAND SAWS,
MORTICERS,
SAW BENCHES

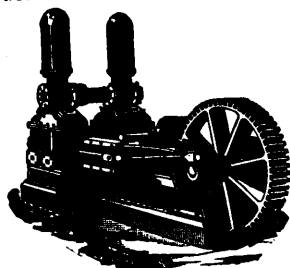
Locomotive and Car Machinery, Special Machinery, Price List and Photographs on application.

Warerooms: Permanent Exhibition, Toronto; Polson Engine Co., 38 Yonge St.; Machinery Supply Ass'n, Montreal.

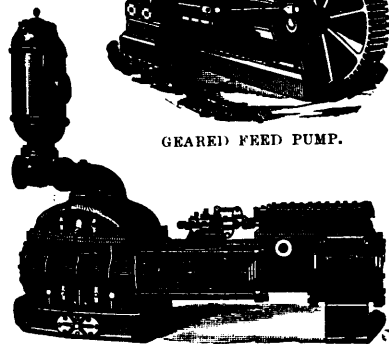
Geo. F. Blake Manufacturing Co.,



BOILER FEED PUMP.



GEARED FEED PUMP.



DUPLEX COMPOUND ENGINE

BUILDERS OF

SINGLE AND DUPLEX

Steam and Power

Pumping Machinery



BOSTON,

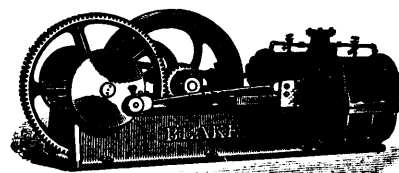
111 FEDERAL STREET

NEW YORK,

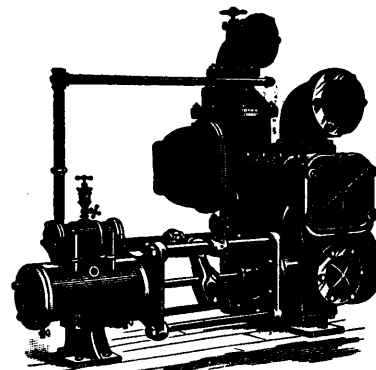
95 & 97 LIBERTY STREET.

SEND FOR ILLUSTRATED CATALOGUE.

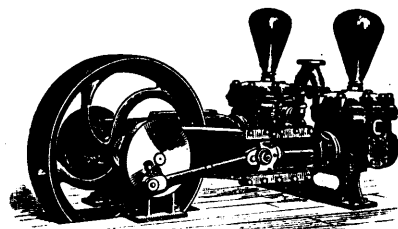
These goods may be seen at the Permanent Exhibition 63 to 69 Front Street West, Toronto.



AIR COMPRESSOR.



AIR PUMP AND CONDENSOR.



BELT PUMP