

THE PIONEER INSPECTION COMPANY OF CANADA
Expert Inspection—Tests and Reports
THE CANADIAN INSPECTION CO., Ltd.
Inspectors to Dominion and Provincial Governments
Representatives at all important CANADIAN, AMERICAN and EUROPEAN WORK
Complete Facilities for all classes of Physical Testing & Chemical Determination
Main Laboratory; 601 Canadian Express Bldg., MONTREAL
Canadian Branches: Amherst, N.S. Toronto, Hamilton, Winnipeg
T. S. GRIFFITHS, Pres. and Gen. Mgr. L. J. STREET, Vice-Pres.

DOMINION BUREAU
ROBERT W. HUNT & COMPANY, ENGINEERS
Bureau of Inspection, Tests, and Consultation,
Chemical and Cement Laboratories
OFFICE AND LABORATORIES
CANADIAN EXPRESS, BUILDING, MCGILL STREET, MONTREAL
CHARLES WARNOCK, Manager

A. L. Reading, Manager. T. C. Irving, Jr., A.M., Can. Soc. C.E., Sec'y

STANDARD INSPECTION BUREAU, Ltd.

Inspecting and Consulting Engineers

Expert Examination and Tests of Material and Workmanship. Inspection of Steel Rails and Fittings, Cars, Locomotives, Bridges, Structural Material, Cast Iron Pipe, etc. Resident Inspectors located at all important Manufacturing Centres.

Head Offices: 1314 Traders Bank Bldg., Toronto

THE HILL ELECTRIC SWITCH & MFG., CO., LTD.

Knife Switches, Switch-boards,
Panel Boards and Cabinets.

1560 St. Lawrence Street - MONTREAL

"SAMSON" Canada's Best

THE OWEN SOUND PORTLAND CEMENT CO.,

LIMITED

WRITE FOR PAMPHLET
"CEMENT, HOW TO USE IT, HOW TO BUY IT."

General Sales & Head Office, Owen Sound, Ont.

**EXPANDED METAL
AND FIREPROOFING
CO., LIMITED**

New Office and Factories:
Foot of Fraser Ave., Toronto

SPECIALISTS IN
REINFORCED CONCRETE CON-
STRUCTION FOR 12 YEARS
SPECIFY SECTION
AND PHYSICAL QUALITIES



ENSURES RELIABILITY
Estimates, Catalogues, Etc.

Our Engineering staff, from now on, more than ever will make a point of replying fully to enquiries from engineers concerning every phase of Re-inforced Concrete construction and design, accompanied by plans where called for

BEAMS, COLUMNS, FLOORS, TANKS, CULVERTS, Etc.

The Standard Adjunct **STEELCRETE** To Concrete Plates Is

EXPANDED METAL

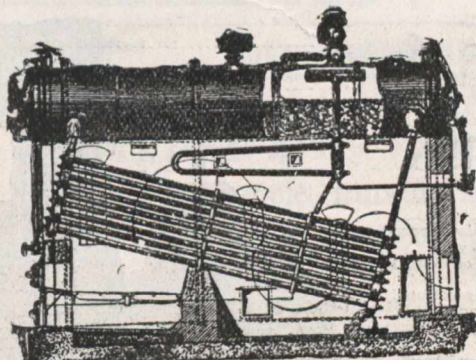
WE NOW MANUFACTURE

**Fenestra Steel Window Sash for
Power and Transformer Houses,
Factories, Etc., Etc.**

Obtain our estimates and compare wooden sash cost with

FENESTRA STEEL SASH

BABCOCK & WILCOX, LTD.



'B.&W.' Boiler Fitted with Superheater.

PATENT

WATER-TUBE BOILERS

SAFETY - ECONOMY - DURABILITY

Over 7,000,000 H. P. now in use

HEAD OFFICE FOR CANADA—11 PLACE D'ARMES, MONTREAL

Branch Office—Traders Bank Bldg., Toronto

Our text-book STEAM sent gratis on request